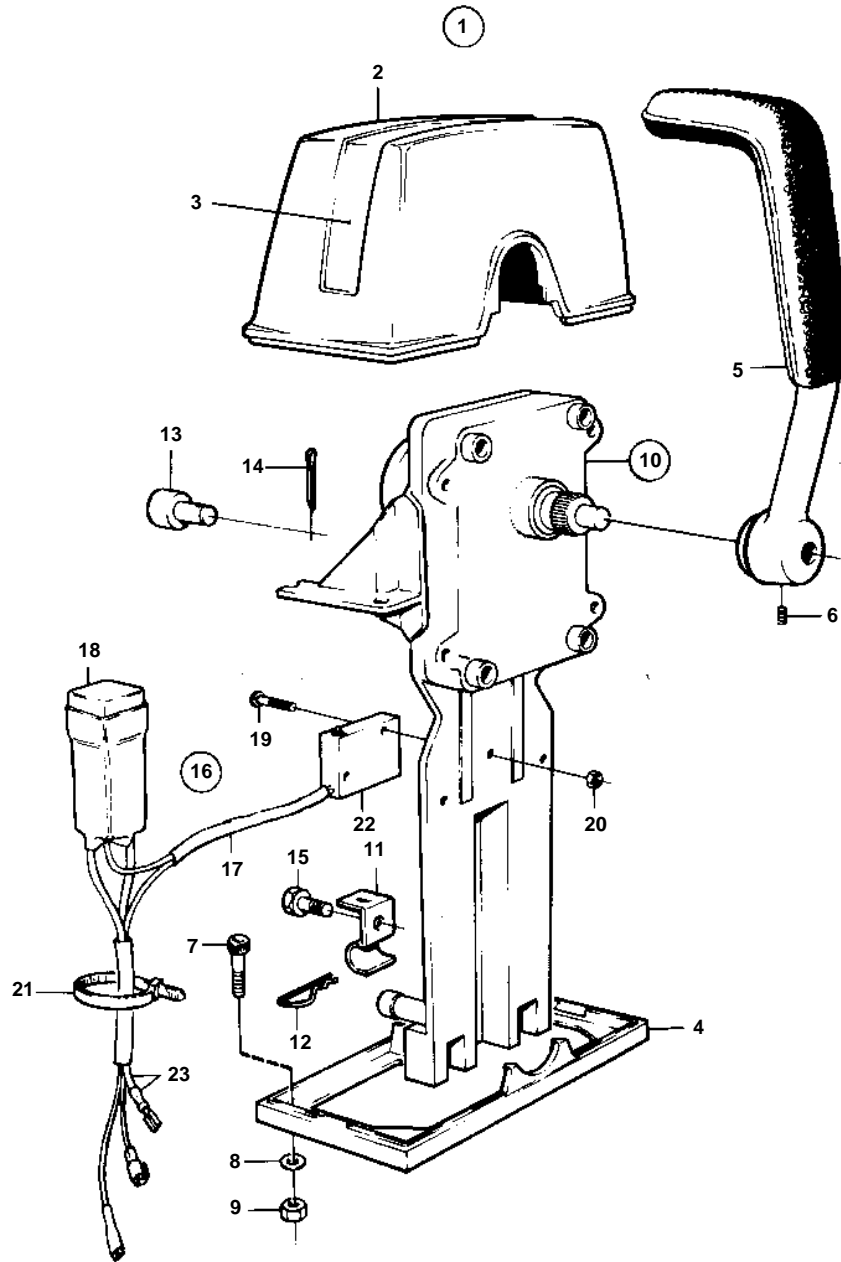


230A, 230B, 250A, 250B



7459

**230A, 230B, 250A, 250B**

REF	PART NO.	QTY	DESCRIPTION	NOTES
1	851603	1	Mounting kit	TWIN
2	839477	1	· Cover	
3		1	· DECAL	
4	839479	1	· Plate	
5	839475	2	· Hand lever	
6	839693	2	· Lock screw	
7	947671	4	· Hex. socket screw	
8	960138	4	· Washer	
9	955780	4	· Hexagon nut	
10	851600	2	Control	
11	853423	2	· Retainer	
12	852924	2	· Clip	
13	839638	2	· Cube	
14	17253	2	· Split pin	
15	839664	2	Screw	
16	855352	2	Neutral position con	
17		2	· Cable kit	
18	876037	2	· Relay kit	(1501832)
19	946177	4	· Cross recessed screw	
20	947536	4	· Hexagon nut	
21	948210	X	· Cable tie	
22	850200	2	· Toggle switch	
23		X	CABLES AND TERMINALS	SEE GROUP 3