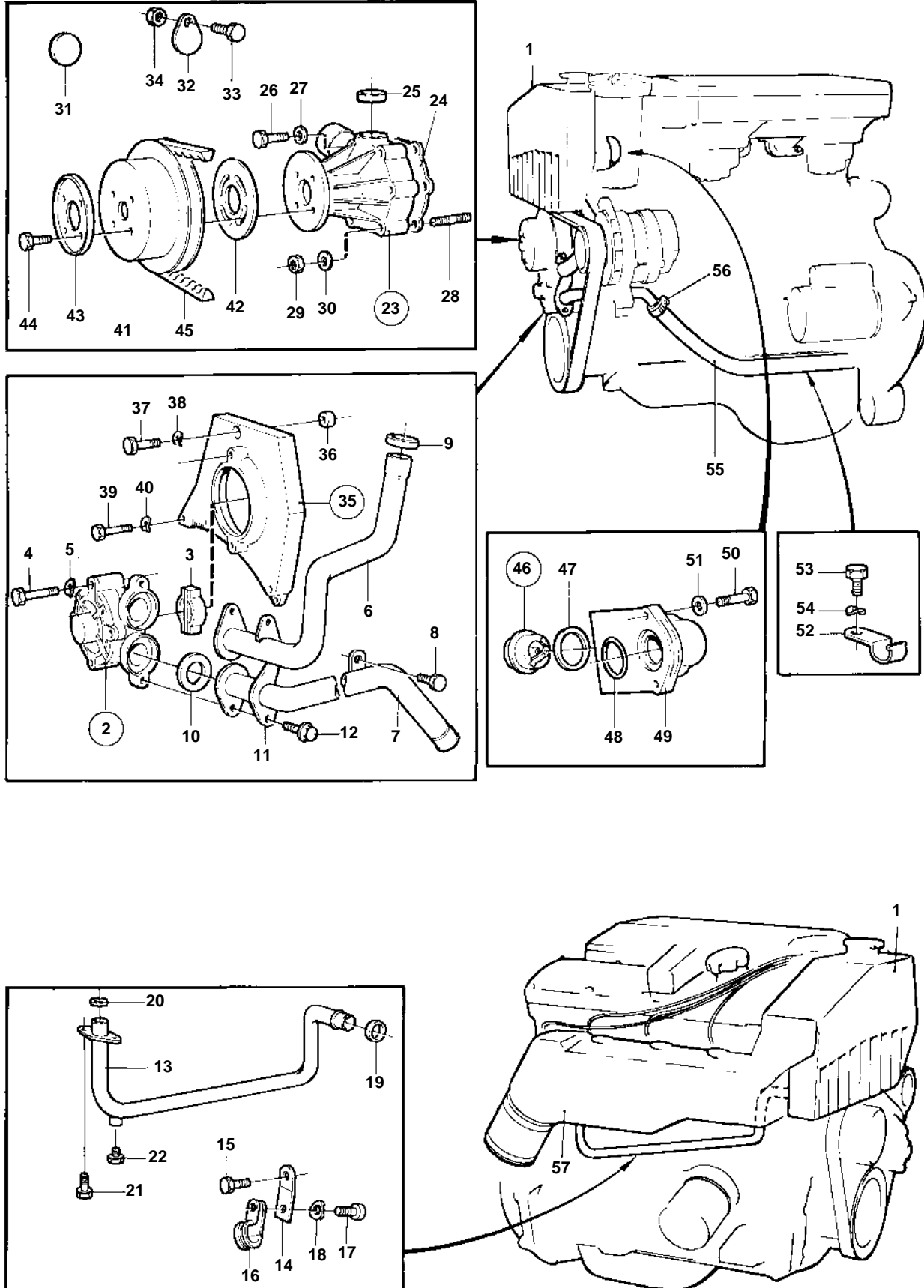


230B



230B

REF	PART NO.	QTY	DESCRIPTION	SEE SEC.	NOTES
1		1	HEAT EXCHANGER AND WATER FILTER WITH INSTALLATION COMPONENTS	02B-0700	
2	855578	1	Sea water pump	02B-1150	
3	831009	1	Cross piece		SEE GROUP 2A
4	955278	2	Screw		
5	941906	2	Spring washer		
6	855414	1	Tube		
7	857137	1	Coolant pipe		
8	946471	1	Screw		
9	418412	1	Sealing ring	IK	
10	831622	2	Gasket	IK	
11	831903	1	Flange		
12	946544	2	Flange screw		
13	855416	1	Tube		
14	855666	1	Bracket		
15	946440	1	Flange screw		
16	952632	1	Clamp		
17	966862	1	Screw		
18	955892	1	Washer		
19	418412	1	Sealing ring	IK	
20	831622	1	Gasket	IK	
21	946544	2	Flange screw		
22	180759	1	Plug		
23	3547560	1	Water pump COMPONENTS		
24	1378491	1	Gasket	IK	
25	3547991	1	Sealing ring	IK	
26	968872	3	Screw		
27	955892	3	Washer		
28	924056	2	Screw		
29	968899	2	Flange nut		
30	955892	2	Washer		
31	418571	1	Plug		
32	1219915	1	Washer		
33	968871	1	Screw		
34	968899	1	Flange nut		
35	855504	1	Bracket		SEE GROUP 2A
36	828035	1	· Bushing		SEE GROUP 2A
37	959231	2	Screw		SEE GROUP 2A
38	941907	2	Spring washer		SEE GROUP 2A
39	968877	1	Screw		SEE GROUP 2A
40	941906	1	Spring washer		SEE GROUP 2A
41	463629	1	Pulley		
42	855604	1	Washer		
43	463301	1	Washer		
44	974676	4	Screw		
45	966694	1	V-belt		SEE GROUP 3
46	875580	1	Thermostat kit	IK	82%Z9C
47	416033	1	· Sealing ring	IK	
48	925091	1	O-ring	IK	
49	855411	1	Thermostat housing		
50	963197	2	Screw		
51	955892	2	Washer		
52	834352	1	Clamp		SEE GROUP 10A. INCLUDED IN SHORTBLOCK 876141.
53	968885	1	Screw		SEE GROUP 2A
54	941907	1	Spring washer		SEE GROUP 2A
55	857136	1	Hose		SEE GROUP 4A
56	961669	2	Hose clamp		SEE GROUP 4A
57		1	INDUCTION- AND EXHAUST MANIFOLD	02B-1765	

230B

REF	PART NO.	QTY	DESCRIPTION	SEE SEC.	NOTES
57					