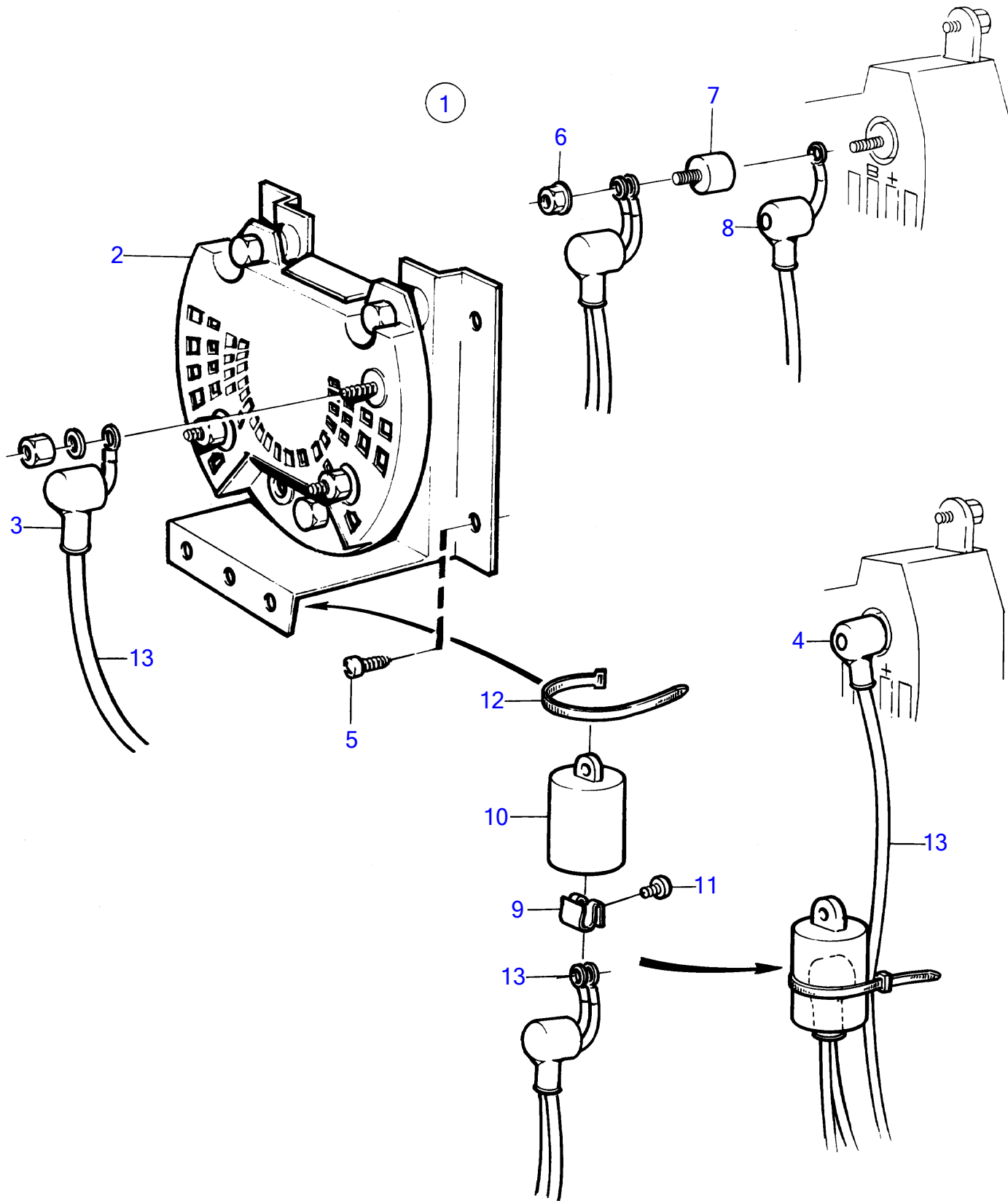


TMD41A, TMD41B, D41A, D41B, TAMD41A, TAMD41B, AQAD41A, AD41A, AD41B



TMD41A, TMD41B, D41A, D41B, TAMD41A, TAMD41B, AQAD41A, AD41A, AD41B

REF	PART NO.	QTY	DESCRIPTION	NOTES
1	859499	1	Junction block	For charging of 2 batteries.
2	(858842)	1	• Junction block	Obsolete part
3	842150	3	• Protective cap	
4	842150	1	• Protective cap	
9	859492	1	• Spring nut	
10	859493	1	• Protecting casing	
11	955126	1	• Cross recessed screw	
12		X	• strip clamp	See group 3
13		X	• cables and terminals	See group 3