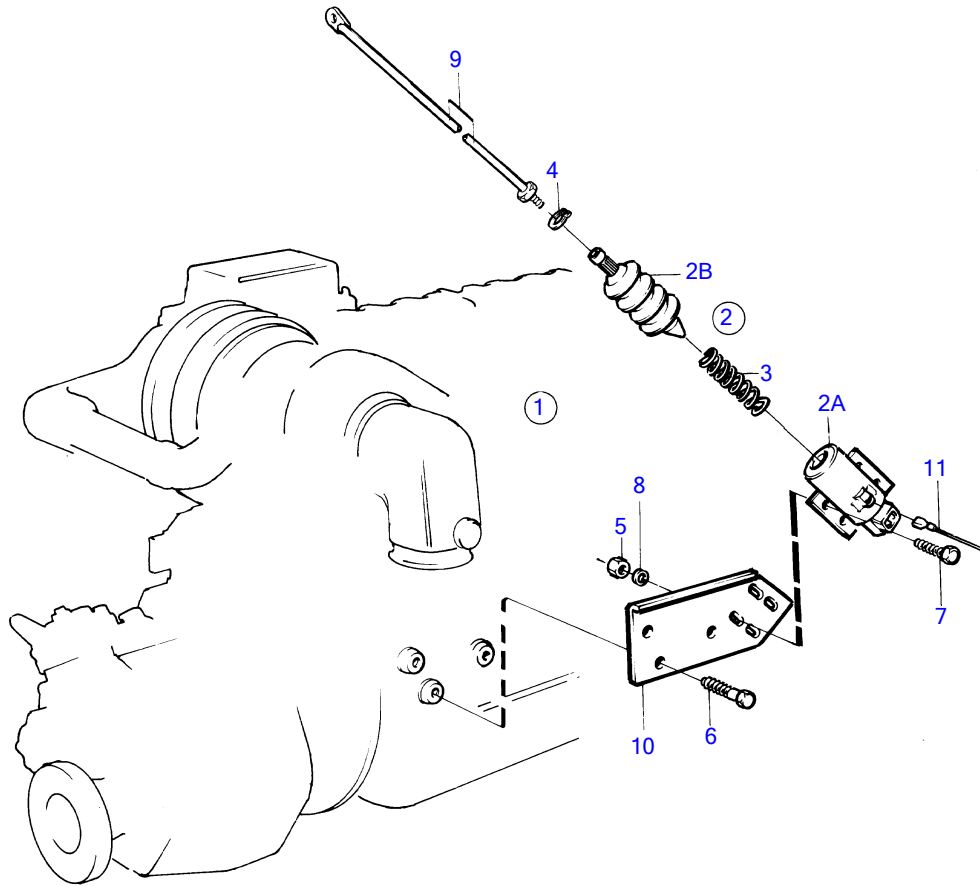


TAMD41A



9771

## TAMD41A

REF	PART NO.	QTY	DESCRIPTION	SEE SEC.	NOTES
1	859079	1	Stop solenoid		12V
2	849370	1	• Stop solenoid		Repl by 859079
	848926	1	• Stop solenoid		Repl by 876175
2A		1	• • solenoid		
2B		1	• • solenoid		
3	843401	1	• Return spring		
4	(969294)	1	• Snap ring		Obsolete part
5	945408	4	Flange nut		
6	970972	3	Hexagon screw		(955342)
7	946173	4	Flange screw		
8	960141	4	Washer		
9	(858928)	1	Pull rod		Obsolete part
10	(858925)	1	Bracket		Obsolete part
11		X	cables and terminals	19549	