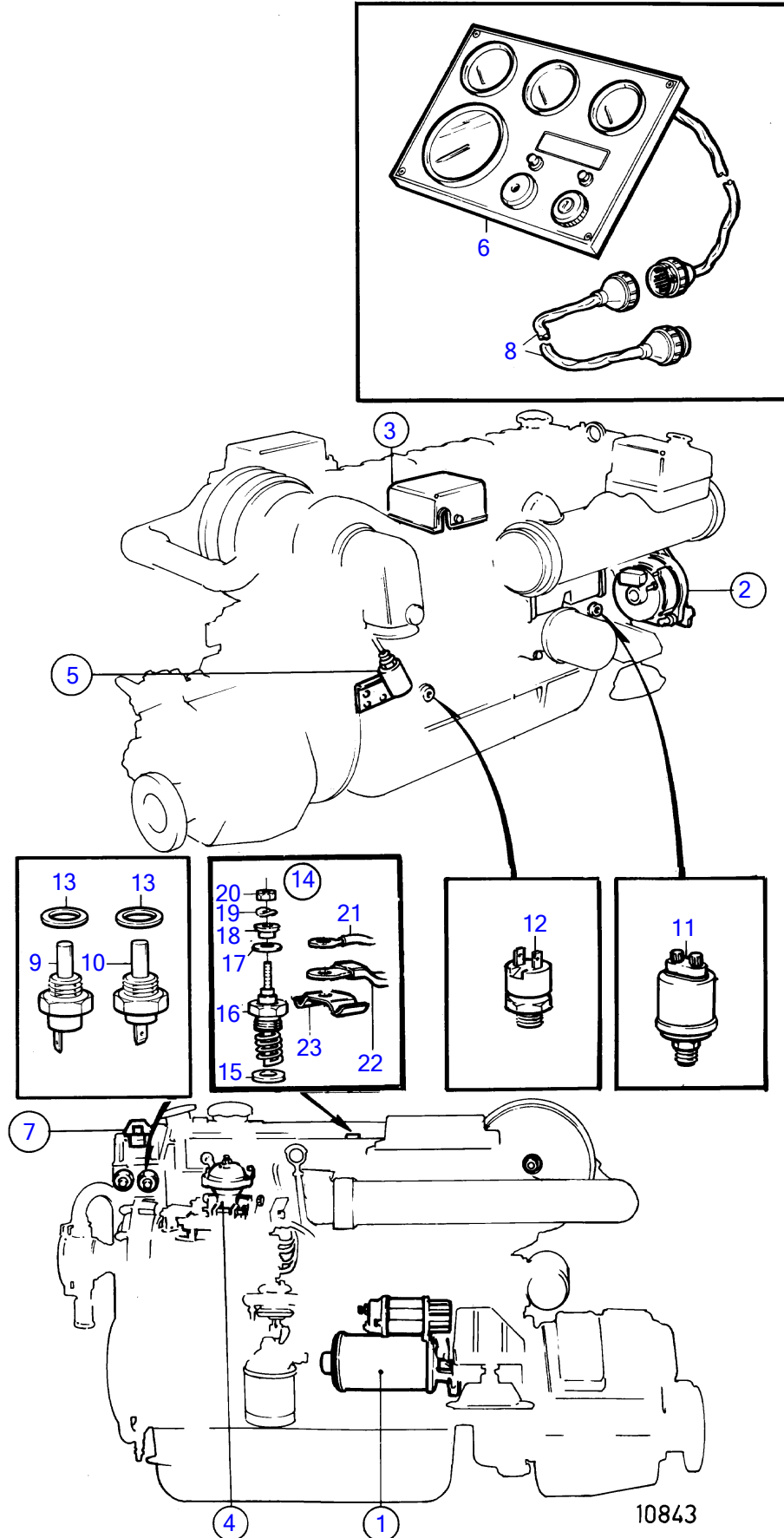


TMD41A



TMD41A

REF	PART NO.	QTY	DESCRIPTION	SEE SEC.	NOTES
1		1	starter motor with installation components	19530	
2		1	alternator with installation components	19525	
3		1	electrical box with installation components	19556	
4		1	micro switch with installation components	19545	
5		1	solenoid with installation components	19542	
6	838809	1	Instrument panel		SN-2204108611
			.	19539	
	858865	1	Instrument panel		SN2204108612-2204114999, Repl by 859099
			.	19540	
	859099	1	Instrument panel		SN2204115000-2204126822, Repl by 864040
			.	19539	
	864040	1	Instrument panel		12V, SN2204126823-
			.	19541	
7		1	relay with installation components	19548	
8	846648	X	Extension cable\verl		CPC, L=3000mm
	846649	X	Extension cable\verl		CPC, L=5000mm
	846650	X	Extension cable\verl		CPC, L=7000mm
9	833927	1	Thermo monitor		12V,93°C
10	827151	1	Temperature sensor		12V,40-120°C
11	843231	1	Oil pressure sensor		
12	864284	1	Pressure monitor		(848367)
13	957181	2	Gasket		
14	876132	1	Glow plug		
15	859211	1	• Sealing ring		
16	3581635	2	• Glow plug, glow plug		
17		1	• o-ring		Not to be used where contact plate 860044 shall be used.
18	859328	1	• Thrust sleeve		
19	941905	1	• Spring washer		
20	965483	1	• Flange nut		
21	860173	1	Cable kit		Alt
22	859450	1	Rail		Alt
23	860044	1	Switch brace		Alt

7745630-30-19551

10843

Upd:2011-09-27