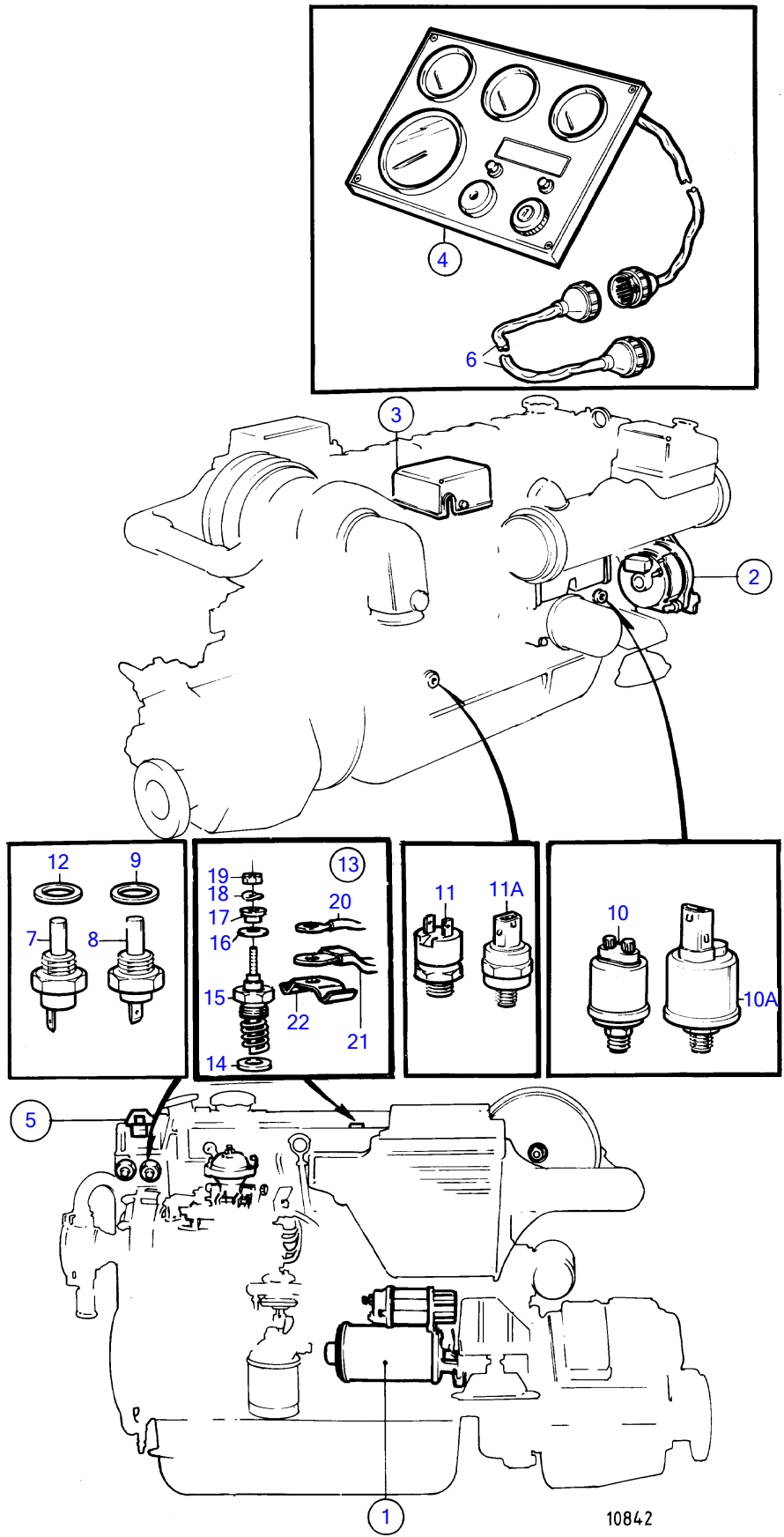


TAMD41B



TAMD41B

REF	PART NO.	QTY	DESCRIPTION	SEE SEC.	NOTES
1		1	starter motor with installation components	19530	
2		1	alternator with installation components	19528	
3		1	electrical box with installation components	19557	
					Product no.868288
4	864040	1	installation components Instrument panel		Product no.868192,868193,868437,868242 12V
			•	19541	
	864041	1	Instrument panel		24V
			•	19540	
5		1	relay with installation components		Product no.868448
				19548	
				19548	
6	846648	X	Extension cable'verl		CPC, L=3000mm
	846649	X	Extension cable'verl		CPC, L=5000mm
	846650	X	Extension cable'verl		CPC, L=7000mm
7	833927	1	Thermo monitor		12V,93°C
	858229	1	Thermo monitor		24V
8	827151	1	Temperature sensor		12V,40-120°C
	862326	1	Sensor kit		24V
9	957181	1	Gasket		For 827151
	947624	1	• Gasket		For 862326
10	843231	1	Oil pressure sensor		Product no.868448
	843231	1	Oil pressure sensor		For 12 voltage electric system., Product no.868189,868190,868191,868438
					SN-2204134609
					SN-2204134609
10A	862155	1	Oil pressure sensor		For 12 voltage electric system., Product no.868189,868190,868191,868438
10					SN2204134610-
	862155	1	Oil pressure sensor		For 24 voltage electric system., Product no.868439
					SN2204134610-
11	864284	1	Pressure monitor		Product no.868448
	864284	1	Pressure monitor		For 12 voltage electric system., Product no.868189,868190,868191,868438
					SN-2204134609
					SN-2204134609
11A	863169	1	Pressure monitor		For 12 voltage electric system., Product no.868189,868190,868191,868438
11					SN2204134610-
	863169	1	Pressure monitor		For 24 voltage electric system., Product no.868439
					SN2204134610-
12	957181	1	Gasket		
13	876132	1	Glow plug		Product no.868448
14	859211	1	• Sealing ring		
15	3581635	2	• Glow plug		
16		1	• o-ring		Not to be used where contact plate 860044 shall be used.
17	859328	1	• Thrust sleeve		
18	941905	1	• Spring washer		
19	965483	1	• Flange nut		
20	860173	1	Cable kit		Alt
21	859450	1	Rail		Alt
22	860044	1	Switch brace		Alt