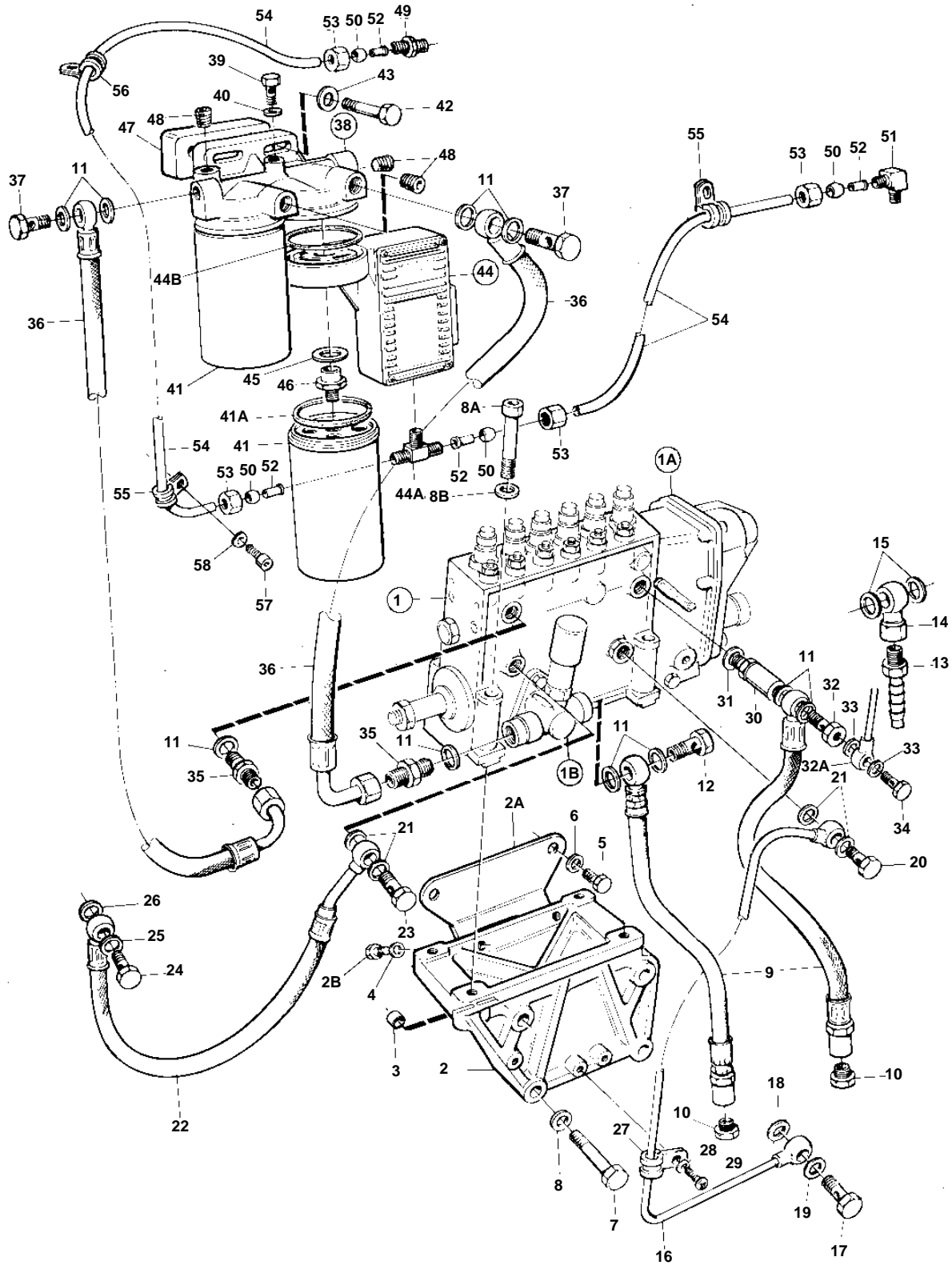


TAMD122P-B, TAMD122P-C



16 720

TAMD122P-B, TAMD122P-C

REF	PART NO.	QTY	DESCRIPTION	SEE SEC.	NOTES
1	3826196	1	Injection pump		
	3803786	1	Injection pump, exch		Exchange unit
				6063	
1A	3825500	1	Governor		
			Comps. not spec.		
1B	863474	1	Feed pump		
				460	
2	479809	1	Bracket		
2A		1	• Support		
2B	479696	2	• Screw		
3		2	• Guide sleeve		
4	940097	2	• Washer		
5	479696	2	Screw		
6	940097	2	Washer		
7	955566	4	Screw		
8	940280	4	Spring washer		
8A	940156	4	Screw		
8B	190509	4	Washer		
9	3830312	2	Fuel hose		
10	22753	2	Nipple		
11	969011	6	Gasket		
12	861101	1	Banjo nipple		
13	3825000	2	Nipple		ALT
14	861101	2	Banjo nipple		ALT
15	969011	5	Gasket		ALT
16	478964	1	Oil return pipe		
17	942007	1	Hollow screw		
18	942703	1	Gasket		
19	11994	1	Gasket		
20	48634	1	Hollow screw		
21	947281	4	Gasket		
22	3829244	1	Lube oil hose		(3826447)
23	48634	1	Hollow screw		
24	942081	1	Hollow screw		
25	11994	1	Gasket		
26	942703	1	Gasket		
27	952623	1	Clamp		
28	941906	1	Spring washer		
29	950045	1	Screw		
30	11996309	1	Overflow valve		
31	11996	1	Gasket		
32	16496	1	Hollow screw		
32A		1	Leak-off pipe		
33	947620	2	Gasket		
34	74033	1	Hollow screw		
35	941754	2	Nipple		
36	3830307	2	Fuel hose		
37	25167	2	Hollow screw		
38	8194541	1	Filter housing		(1676832)
39	471177	1	• Screw		
40	947620	1	• Gasket		
41	3825133	2	Fuel filter		
41A			Gasket		
42	940162	2	Screw		
43	942336	2	Spring washer		
44	3829864	1	Control unit	SO	POWER 449kW/2250 RPM (3826955)
	3829863	1	Control unit	SO	POWER 390kW/2100 RPM (3826956)
44A	946082	1	• Nipple		
44B	3825387	1	• Sealing ring		
45	955904	1	Washer		
46	3835801	1	Nipple		(3825333)

TAMD122P-B, TAMD122P-C

REF	PART NO.	QTY	DESCRIPTION	SEE SEC.	NOTES
47		1	Spacer		
48	968062	3	Plug		
49	954378	1	Fitting		
50	954364	4	Fitting		
51	954385	1	Elbow nipple		
52	944717	4	Sleeve		
53	954356	4	Cap nut		
54	945460	X	Plastic pipe		
55	947191	2	Clamp		
56	949746	1	Clamp		
57	956568	1	Screw		
58	955894	1	Washer		