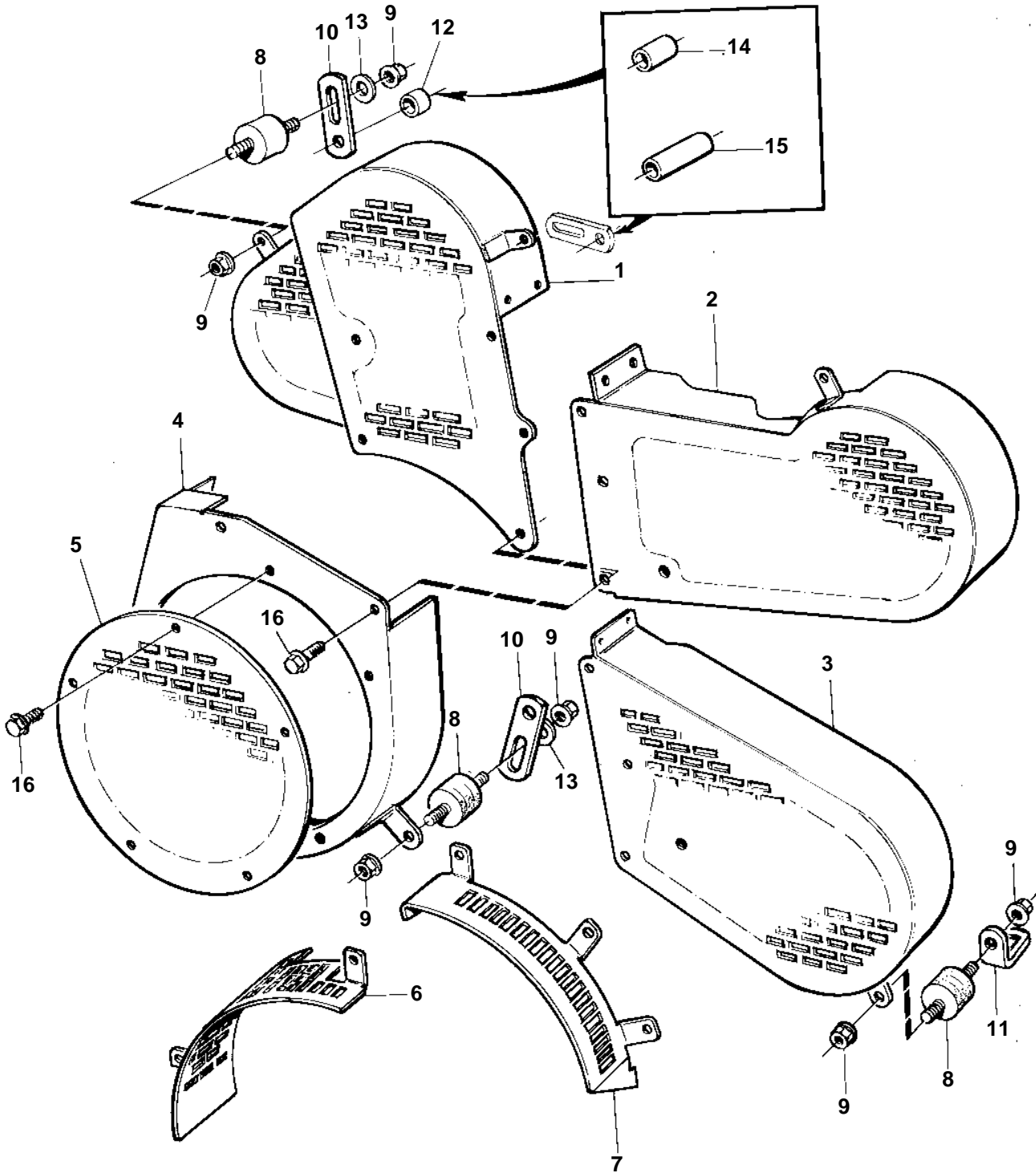


TMD122A, TAMD122A, TAMD122P-A, TAMD122P-B, TAMD122P-C



TMD122A, TAMD122A, TAMD122P-A, TAMD122P-B, TAMD122P-C

REF	PART NO.	QTY	DESCRIPTION		NOTES
1	3826278	1	Protecting casing		
2	3826286	1	Protecting casing	SO	Alternator mounted high.
3	3826287	1	Protecting casing		Alternator mounted low.
4	3826282	1	Protecting casing		
5	3826280	1	Protecting casing		
6	3826351	1	Protecting casing	SO	To be used when PTO is installed.
7	3826352	1	Protecting casing	SO	To be used when PTO is installed.
8	3574797	X	Rubber cushion		
9	945407	X	Flange nut		
10	965535	X	Bracket		
11	965553	1	Bracket		
12	829653	1	Spacer sleeve		
13	976943	X	Washer		(960139)
14	821541	1	Sleeve		KC
15	822791	1	Spacer sleeve		KC
16	967949	X	Screw		(965175)