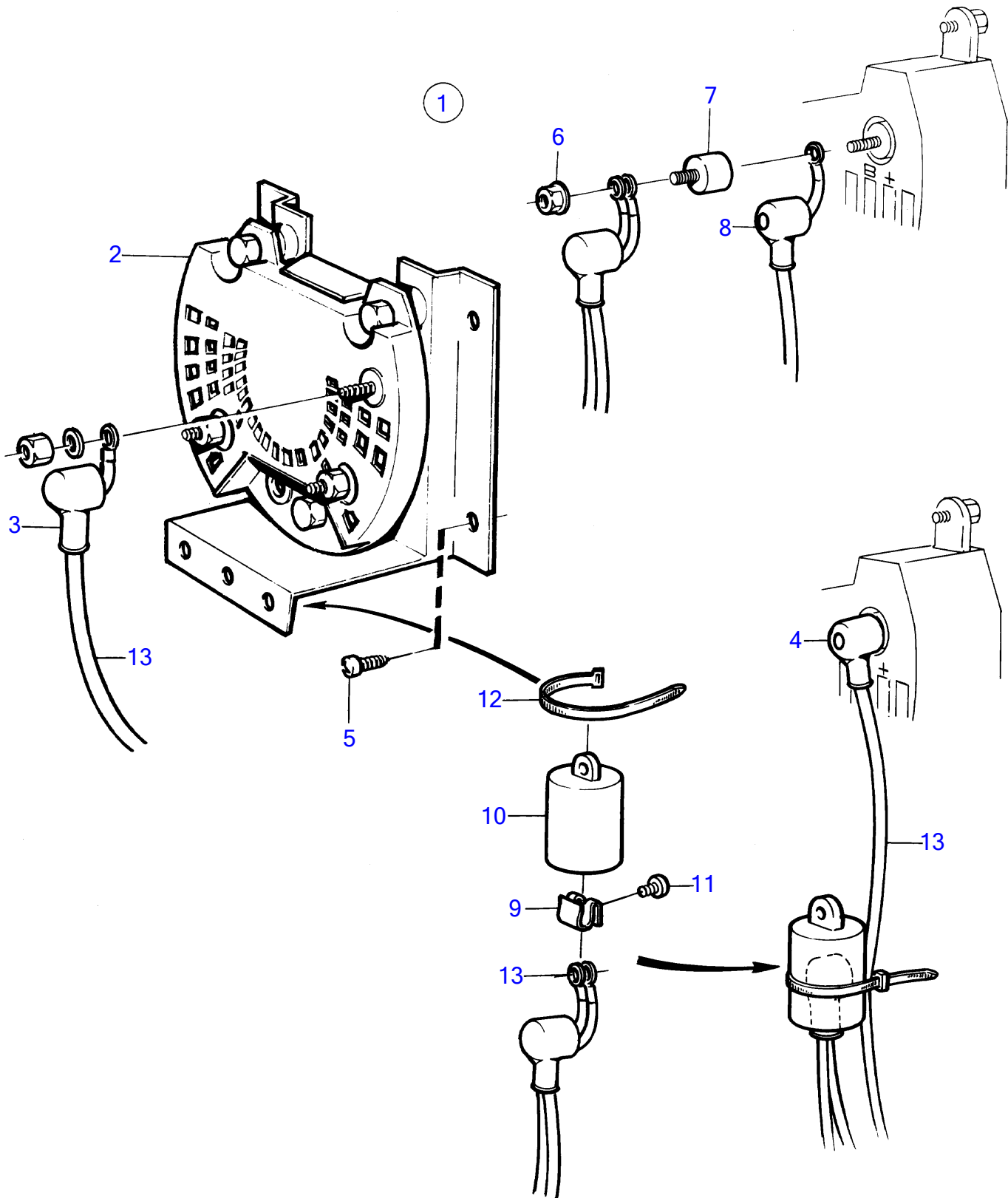


TAMD74A, TAMD74A-A, TAMD74A-B, TAMD74C-A, TAMD74C-B, TAMD74L-A, TAMD74L-B, TAMD74P-A, TAMD74P-B, TAMD75P-A



TAMD74A, TAMD74A-A, TAMD74A-B, TAMD74C-A, TAMD74C-B, TAMD74L-A, TAMD74L-B, TAMD74P-A, TAMD74P-B, TAMD75P-A

REF	PART NO.	QTY	DESCRIPTION	SEE SEC.	NOTES
1	858841	1	Junction block		For charging of 2 batteries., For alternator 12V 50A., Repl by 859499
2	(858842)	1	• Junction block		Obsolete part
3	842150	3	• Protective cap		
5	828647	4	• Screw		Not included in later version of kit 858841.
6	945407	2	• Flange nut		Not included in later version of kit 858841.
7	862330	1	• Rubber cushion		
8	(862345)	1	• Protective cap		Obsolete part
12	948211	1	• Cable tie		
13		X	• electrical materials	1963	