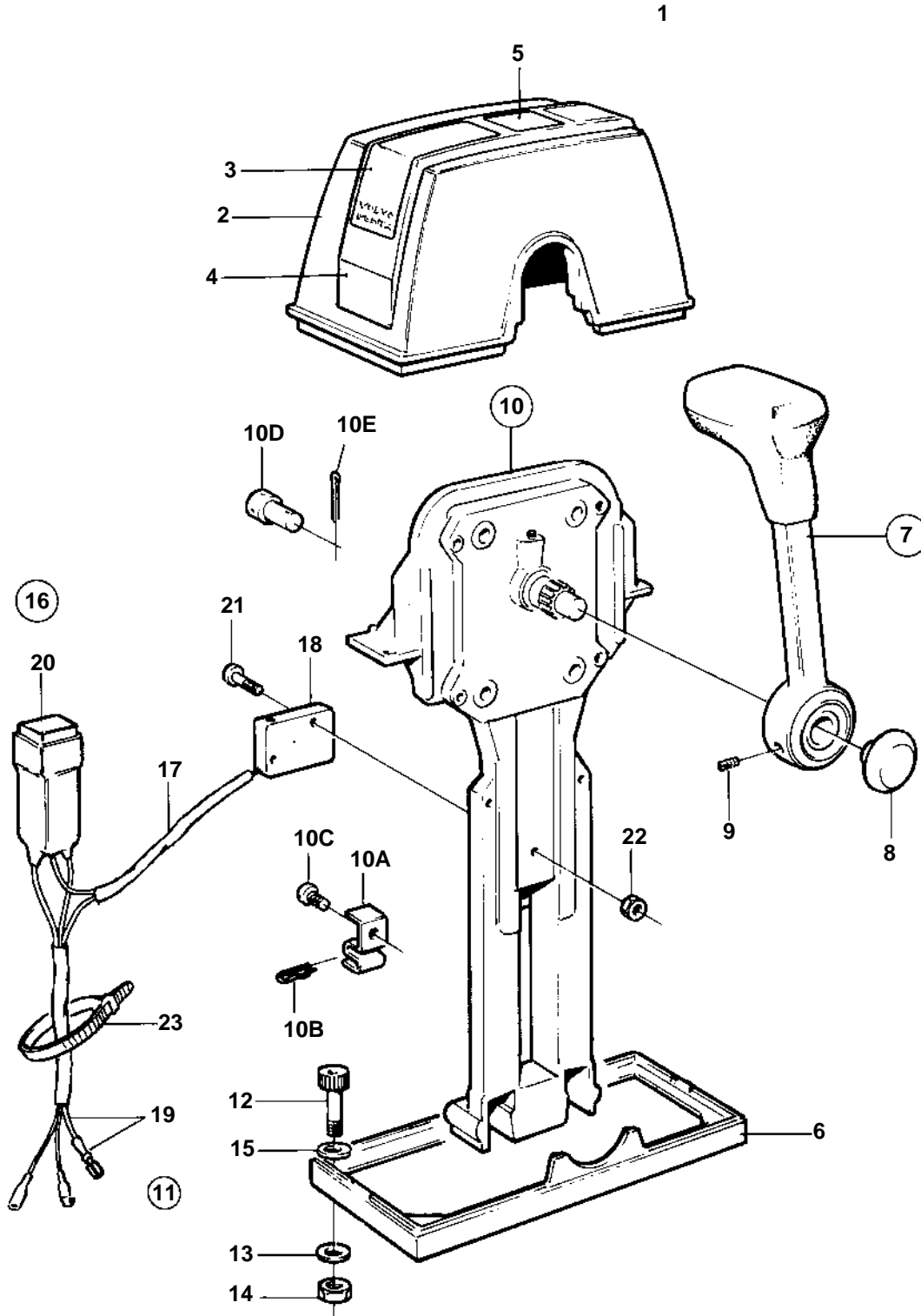


COMMON, KAD32P-A, TAMD42WJ-A, KAMD42P-A, KAD42P-A, KAMD43P-A, KAD43P-A, TAMD63L-A, TAMD63P-A, TAMD71B, TAMD72WJ-A, TMD122A, TAMD122A, TAMD122P-A



15094

COMMON, KAD32P-A, TAMD42WJ-A, KAMD42P-A, KAD42P-A, KAMD43P-A, KAD43P-A, TAMD63L-A, TAMD63P-A, TAMD71B, TAMD72WJ-A, TMD122A, TAMD122A, TAMD122P-A

| REF | PART NO. | QTY | DESCRIPTION | SEE SEC. | NOTES |
|-----|----------|-----|--------------------------|----------|------------------------------|
| 1 | 853169 | 1 | Mounting kit | | For twin installation. |
| 2 | 851881 | 1 | · Cover | | |
| 3 | 851895 | 2 | · · Decal | | |
| 4 | | 1 | · · Cover plate | | |
| 5 | 851897 | 1 | · · Decal | | |
| 6 | 839479 | 1 | · · Plate | | |
| 7 | 852347 | 2 | · Lever | | |
| 8 | | 2 | · · Push button | 266 | Included in complete handle. |
| 9 | | 2 | · · Screw | | Included in complete handle. |
| 10 | 851600 | 2 | · Control | | |
| 10A | 853423 | 2 | · · Retainer | | |
| 10B | 852924 | 2 | · · Clip | | |
| 10C | 839664 | 2 | · · Screw | | |
| 10D | 839638 | 2 | · · Cube | | |
| 10E | 17253 | 2 | · · Cotter pin | | |
| 11 | | 1 | · Screw kit | | |
| 12 | 947671 | 4 | · · Allen head screw | | |
| 13 | 960138 | 4 | · · Washer | | |
| 14 | 955780 | 4 | · · Nut | | |
| 15 | 940090 | 4 | · · Washer | | |
| 16 | 855352 | 2 | Neutral posit contac | | |
| 17 | 839619 | 2 | · Cable kit | | |
| 18 | 850200 | 2 | · · Switch | | |
| 19 | | X | · · Cables and terminals | | SE GROUP 30 |
| 20 | 876037 | 2 | · Relay kit | | |
| 21 | 946177 | 4 | · Screw | | |
| 22 | 947536 | 4 | · Nut | | |
| 23 | 948211 | X | · Strip clamp | | |