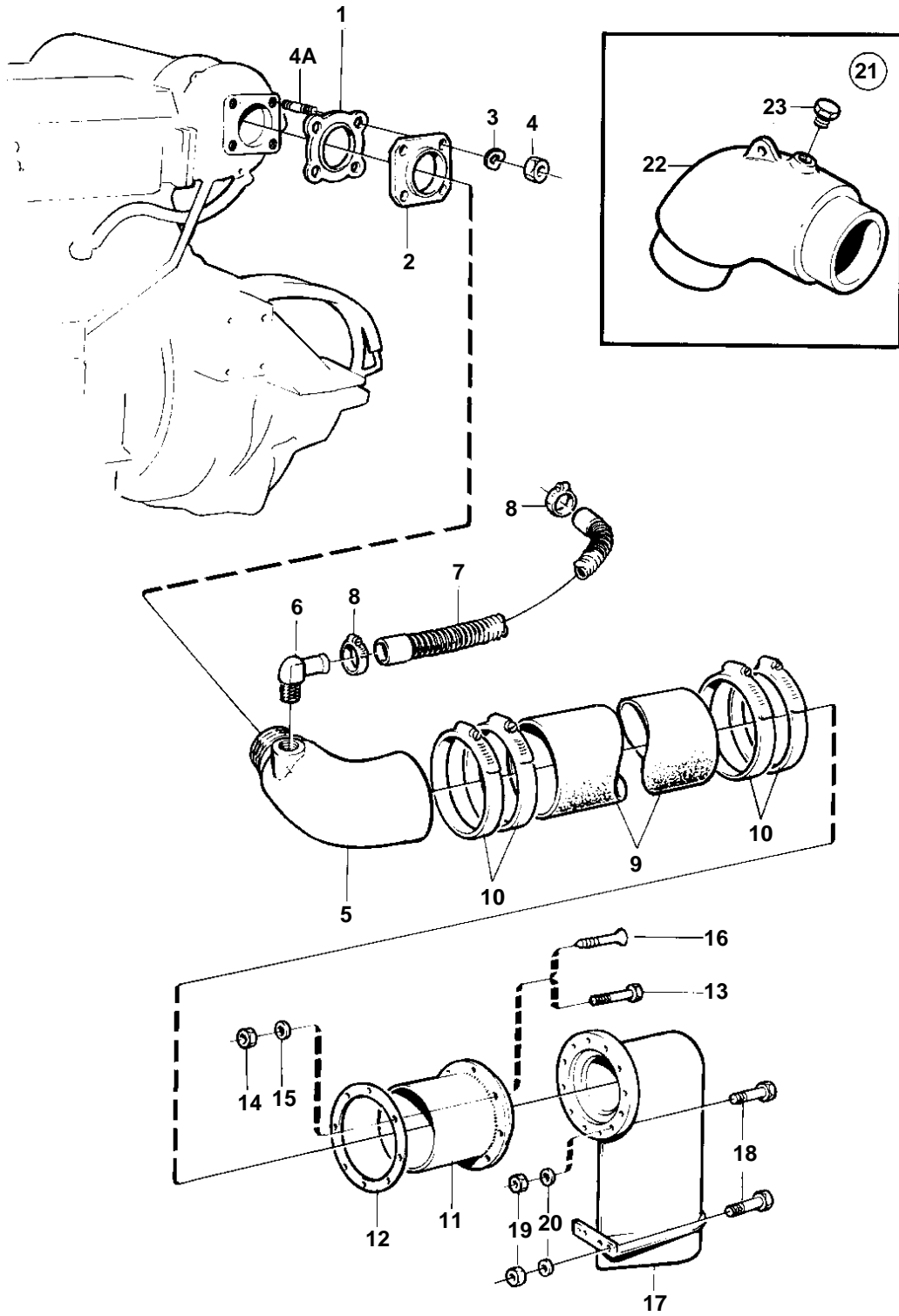


TAMD61A



15527

## TAMD61A

REF	PART NO.	QTY	DESCRIPTION	SEE SEC.	NOTES
1	424630	1	Gasket		EARLY TYPE
2	823770	1	Flange		
3	941908	4	Spring washer		
4	940183	4	Nut		
4A	479972	4	Stud		
5	848544	1	Exhaust riser	710	Replaced by 1 ea exhaust pipe elbow 865545, 1 ea 864952 and 1 ea clamp 865013. EARLY TYPE
6	848420	1	Hose attachment		
7	848327	X	Hose		L=550mm. Oil cooler, reverse gear-exhaust riser. REPLACED BY 863615
	863615	1	Hose		
8	961672	4	Clamp		FOR 863615
	961673	4	Clamp		FOR 848327
9	828489	X	Exhaust hose		
10	943485	4	Clamp		
11	836757	1	Hull fitting		
12	836758	1	Gasket		
13	941815	8	Screw		
14	940190	8	Nut		
15		8	Washer		
16		8	Wood screw		
17	836823	1	Muffler		
18		16	Screw		
19	940190	16	Nut		
20	940191	16	Washer		
21		1	Exhaust riser		90° EARLY TYPE
22	836925	1	· Riser		90° EARLY TYPE
23	807044	1	· Plug		EARLY TYPE