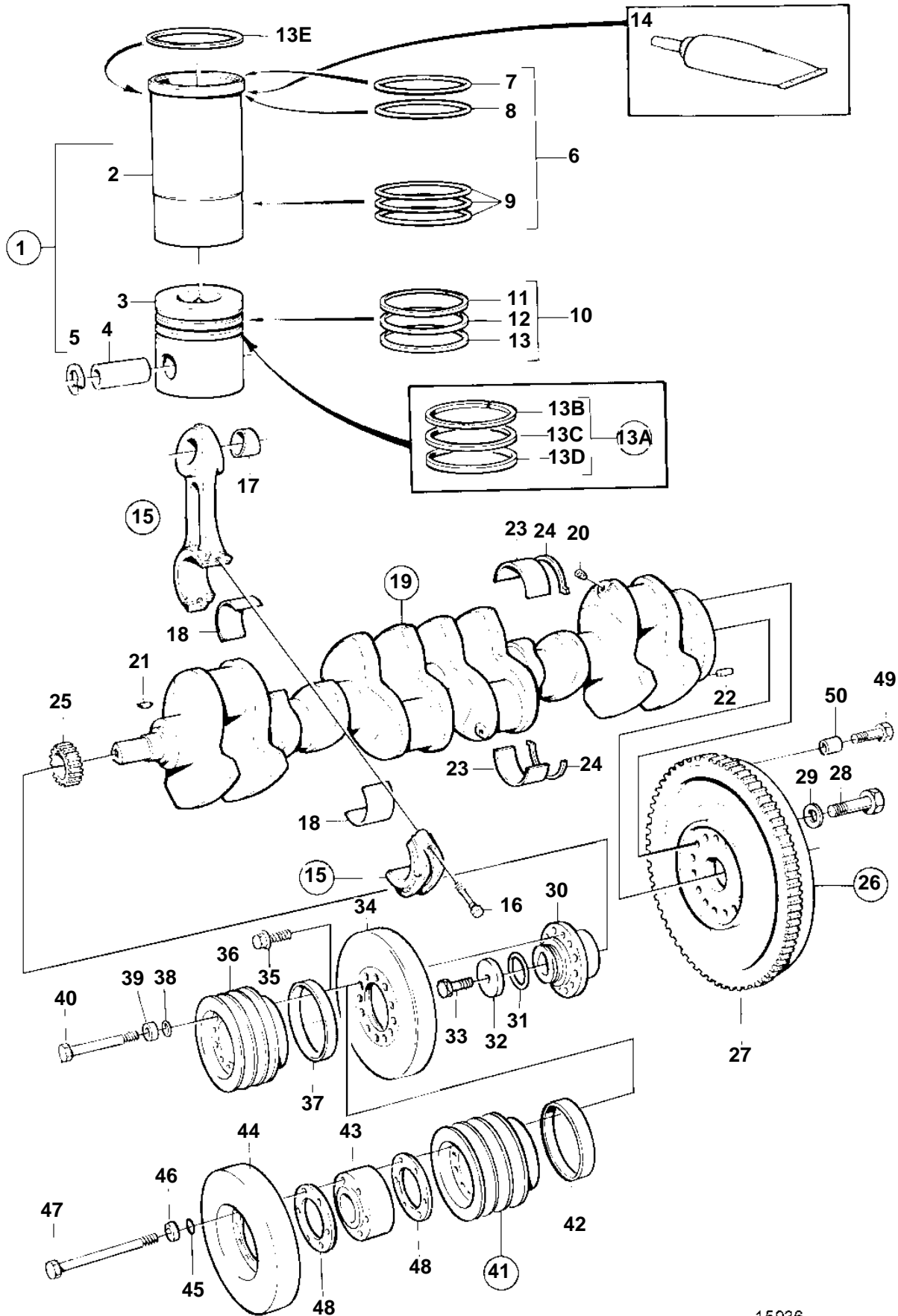


TAMD162A, TAMD162B, TAMD162C, TAMD162C-B



15936

TAMD162A, TAMD162B, TAMD162C, TAMD162C-B

REF	PART NO.	QTY	DESCRIPTION	NOTES
1	3826843	6	Cylinder liner kit, keystone	
2		6	· Cylinder liner	
3		6	· Pistonkeystone	
4	1556940	6	· Piston pin	(1556200) L=120mm
5	914532	12	· Snap ring	
6	270935	6	· Sealing ring kit	
7	1543507	6	· · Sealing ring	
8		6	· · Sealing ring	
9		12	· · Sealing ring	
		6	· · Sealing ring	
10	3826935	6	· Piston ring kit, keystone	SNXXXXXXXXXX/4410-
11		6	· · Compression ringupper	TH=4,0mm
12		6	· · Compression ringlower	TH=3,5mm
13		6	· · Oil scraper ring	
13A	276036	6	Piston ring kit, not keystone	SN-XXXXXXXXXX/4409
13B		6	· Compression ringupper	TH=2,96mm
13C		6	· Compression ringlower	TH=3,46mm
13D		6	· Oil scraper ring	
13E	1548125	X	Shim	TH=0,20mm. Shims to adjust the cylinder liner level.
	1548126	X	Shim	TH = 0,30mm. Shims to adjust the cylinder liner level.
	1548127	X	Shim	TH = 0,50mm. Shims to adjust the cylinder liner level.
14	1161231	X	Sealant	304ml
	1161277	X	Sealant	10g
15	863794	6	Connecting rod	CLASSIFIED
16	1543035	12	· Screw	
17	1543034	6	· Bushing	
18	270796	6	Big end bearing kit	STD D
	270797	6	Big end bearing kit	U.S=0,25mm
	270798	6	Big end bearing kit	U.S=0,51mm
	270799	6	Big end bearing kit	U.S=0,76mm
19	863792	1	Crankshaft	CLASSIFIED
20	968060	6	· Plug, with sealant	REPL BY 978130
	978130	6	· Plug, without sealant	
21	422253	1	· Woodruff key	
22	950645	1	· Pin	
23	270792	7	Main bearing kit	STD D
	270793	7	Main bearing kit	U.S=0,25mm
	270794	7	Main bearing kit	U.S=0,51mm
	270795	7	Main bearing kit	U.S=0,76mm
24	270929	1	Thrust washer kit	STD D
	270930	1	Thrust washer kit	O.S=0,10mm
	270931	1	Thrust washer kit	O.S=0,20mm
	270932	1	Thrust washer kit	O.S=0,30mm
25	1543444	1	Gear	
26	3825678	1	Flywheel	(849115)
27	8193939	1	· Gear ring	
28	849912	14	Screw	
29	1543563	14	Washer	
30	848851	1	Hub	
31	945512	1	O-ring	To be used when belt-pulley alternative power-take-off is installed.
32	422124	1	Washer	
33	862504	1	Screw	
34	1543834	1	Vibration damper	
35	946472	6	Screw	L=30mm
36	863272	1	Pulley, 12-hole	3-GROOVES, D=208mm
37	862032	1	Wear ring, crankshaft seal	
38	955974	12	O-ring	
39	4956010	12	Washer	
40	970960	12	Screw, L=100mm	
41		1	V-belt pulley6-hole	3-GROOVES, D=190mm. Earlier production of 6 ea of screw is replaced by 12 ea screw.
				SN-1101051790/XXXXX
	3825893	1	V-belt pulley, 12-hole	3-GROOVES, D=190mm

TAMD162A, TAMD162B, TAMD162C, TAMD162C-B

REF	PART NO.	QTY	DESCRIPTION	NOTES
41				SN1101051791/XXXXX-
42	862032	1	· Wear ring, crankshaft seal	
43		1	Hub6-hole	SN-1101051790/XXXXX. Earlier production of 6 ea of screw is replaced by 12 ea screw.
	3825885	1	Hub, 12-hole	SN1101051791/XXXXX-
44	1543834	1	Vibration damper	
45	955974	6	O-ring, 6-hole	SN-1101051790/XXXXX. Earlier production of 6 ea of screw is replaced by 12 ea screw.
	955974	12	O-ring, 12-hole	SN1101051791/XXXXX-
46	4956010	6	Washer, 6-hole	SN-1101051790/XXXXX. Earlier production of 6 ea of screw is replaced by 12 ea screw.
	4956010	12	Washer, 12-hole	SN1101051791/XXXXX-
47	973253	6	Screw, L=180mm	SN-1101051790/XXXXX. Earlier production of 6 ea of screw is replaced by 12 ea screw.
	973253	12	Screw, L=180mm	SN1101051791/XXXXX-
48		2	Gasket6-hole	SN-1101051790/XXXXX. Earlier production of 6 ea of screw is replaced by 12 ea screw.
	3825886	2	Gasket, 12-hole	SN1101051791/XXXXX-
49	955565	8	Screw, generator connection	
50	969300	8	Sleeve, generator connection	