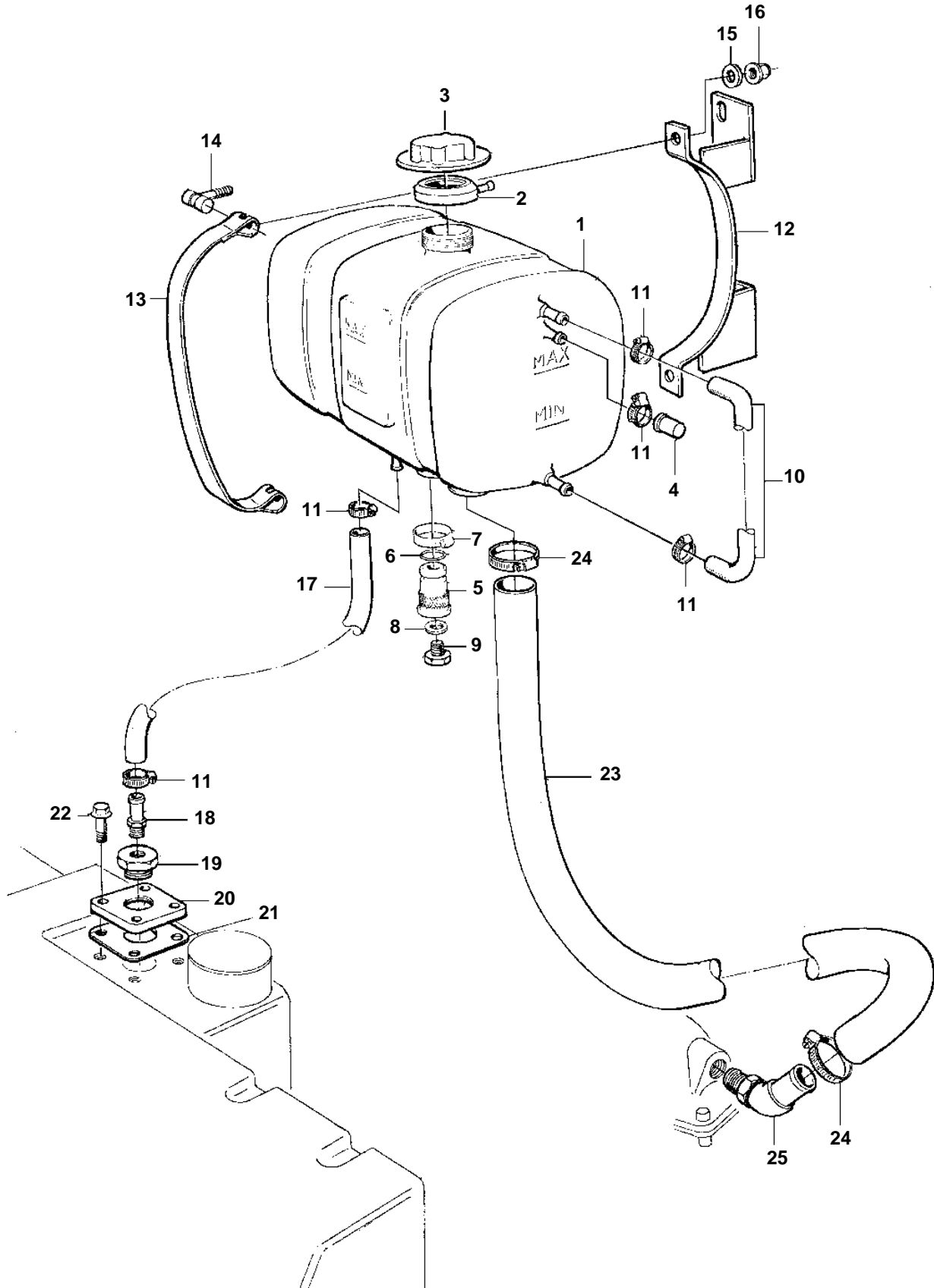


TAMD162A, TAMD162B, TAMD162C, TAMD162C-B



16207

TAMD162A, TAMD162B, TAMD162C, TAMD162C-B

| REF | PART NO. | QTY | DESCRIPTION | NOTES |
|-----|----------|-----|------------------------|----------------------------------|
| 1 | 11033385 | 1 | Expansion tank | 12 L |
| 2 | 11110005 | 1 | Rubber collar | (11033334) |
| 3 | 1542591 | 1 | Cover | 50kPa |
| 4 | 842235 | 1 | Cap | |
| 5 | 11031743 | 1 | Nipple | |
| 6 | 960164 | 1 | O-ring | |
| 7 | 943473 | 1 | Hose clamp | (926244) |
| 8 | 11994 | 1 | Gasket | |
| 9 | 947660 | 1 | Plug | |
| 10 | 943366 | X | Hose | ALT, I.D=7mm, L=300mm (13776) |
| | 943367 | X | Hose | ALT, I.D=9mm, L=300mm |
| 11 | 943470 | 5 | Hose clamp | |
| 12 | 865573 | 2 | Bracket | |
| 13 | 11075152 | 2 | Tensioning band | |
| 14 | 11025992 | 4 | Pin | |
| 15 | 976944 | 4 | Washer | (966674) |
| 16 | 948645 | 4 | Lock nut | |
| 17 | 943367 | X | Hose | |
| 18 | 942722 | 1 | Nipple | |
| 19 | 942919 | 1 | Nipple | |
| 20 | 849843 | 1 | Cover, expansion tank | |
| 21 | 842137 | 1 | Gasket, expansion tank | |
| 22 | 945444 | 4 | Flange screw | |
| 23 | 944386 | X | Hose | |
| 24 | 943475 | 2 | Hose clamp | |
| 25 | 942649 | 1 | Nipple, water pump | |