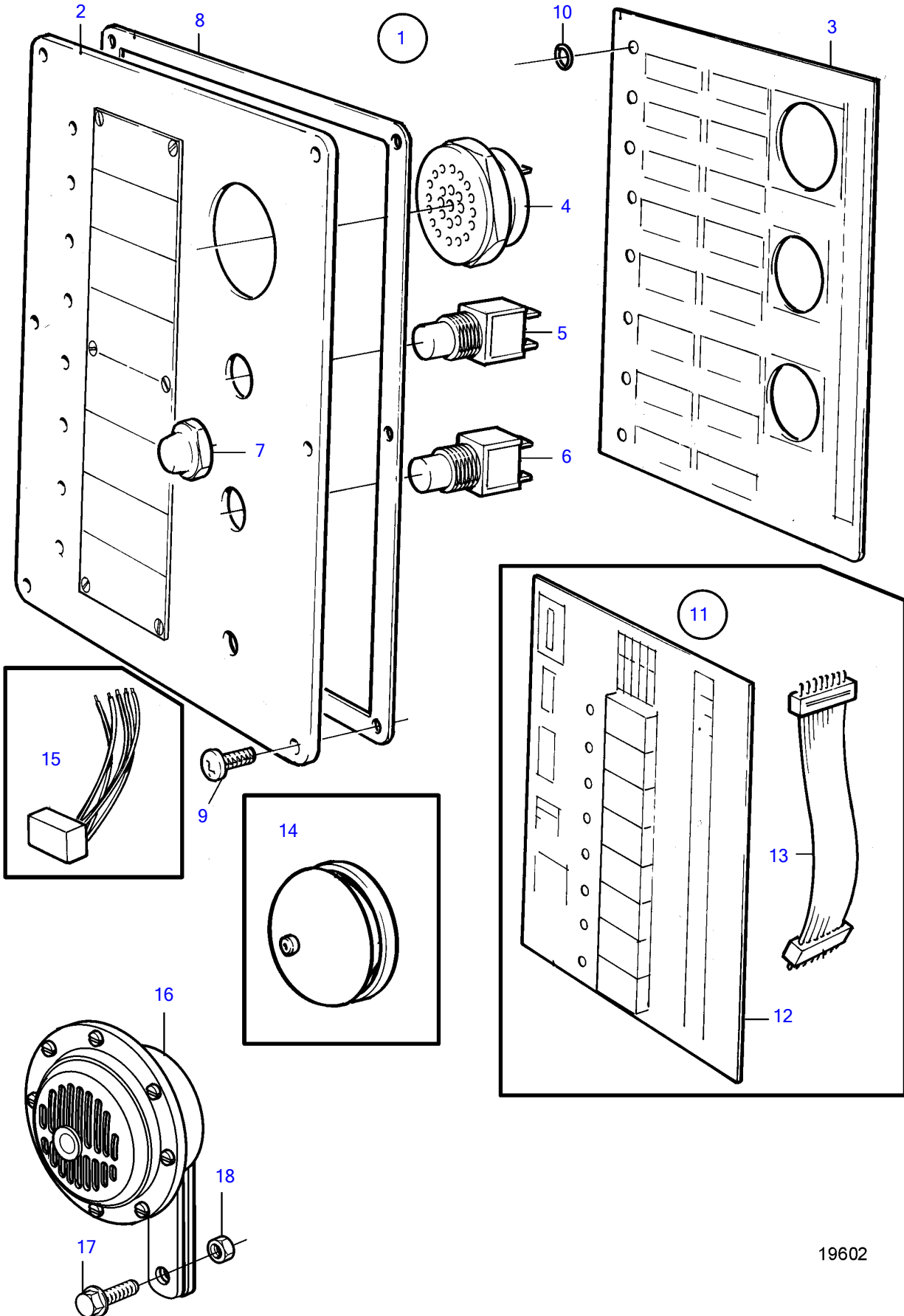


TAMD122A, TMD122A, TAMD122P-A, TAMD122P-B, TAMD122P-C



19602

TAMD122A, TMD122A, TAMD122P-A, TAMD122P-B, TAMD122P-C

REF	PART NO.	QTY	DESCRIPTION	NOTES
1	862753	1	Alarm panel	Repl by 873785
	873785	1	Electronic unit	
	862935	1	• Alarm panel	Repl by 873785
2	(862317)	1	• • Front plate	Obsolete part
3	862739	1	• • Circuit board	Repl by 873785
4	828587	1	• • Buzzer	
5	(862719)	1	• • Toggle switch	Obsolete part
6	828584	1	• • Toggle switch	
7	828586	2	• • Nut	
8	862331	1	• • Gasket	
9	862217	6	• • Cross recessed screw	
10	955978	9	• • O-ring	
11	862793	1	Circuit board	
12		1	• Circuit board	
13		1	• Connecting cable	
14	881806	1	Bell	(823214)
15	863043	1	Interlock box	
16	874050	1	Horn	
17	946440	1	Flange screw	
18	948645	1	Flange lock nut	