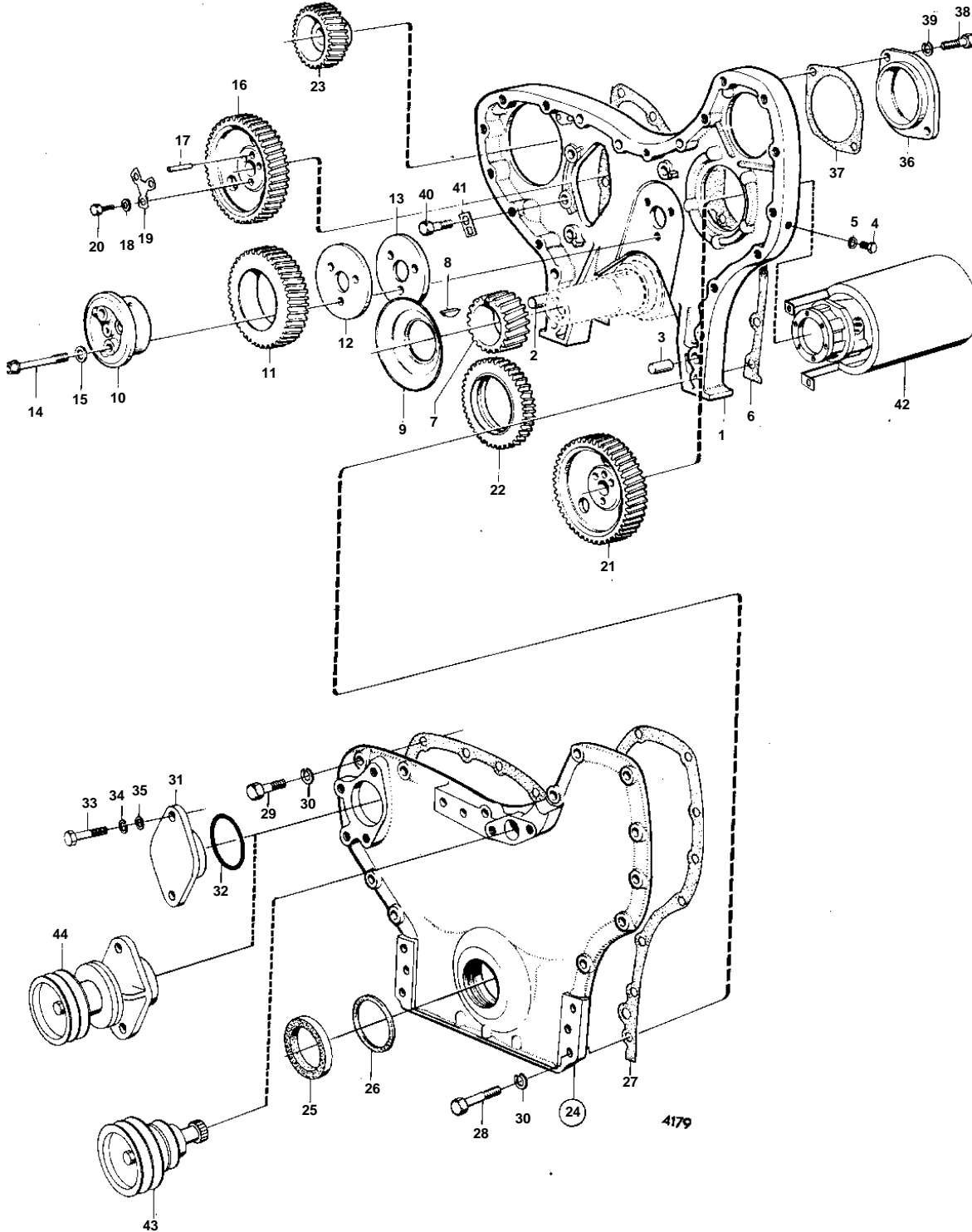


MD70B,TMD70B,TAMD70B,AQD70B



MD70B,TMD70B,TAMD70B,AQD70B

REF	PART NO.	QTY	DESCRIPTION	SEE SEC.	NOTES
1	421413	1	Timing gear casing		
2	941511	1	Pin		
3	941510	1	Pin		
4	943681	1	Plug		
5	925059	1	O-ring	IK	
6	421057	1	Gasket	IK	
7	421080	1	Crankshaft gear, CRANKSHAFT GEAR	02A-0500	
				02A-0550	
8	422253	1	Woodruff key		
9	420172	1	Oil deflector, OIL DEFLECTOR	02A-0500	
				02A-0550	
10		1	SHAFT PIN		M0-53371/XXXX. REPLACED BY 1EA 467461 AND 1EA 467463.
	467463	1	Bearing spindle		M053372/XXXX-
11		1	IDLER GEAR		M0-53371/XXXX. REPLACED BY 1EA 467461 AND 1EA 467463.
	467461	1	Drive		M053372/XXXX-
			Bulletin 45-01	45-01-EN	Timing Gears, 71, 100, 121
12		1	THRUST WASHER		M0-75672/XXXX. REPLACED BY 1EA 467529 AND 1EA 467528.
	467529	1	Thrust washer		M075673/XXXX-
13	467528	1	Bearing shield		M075673/XXXX-
14	422316	3	Screw		
15	942180	3	Washer		
16	421079	1	Gear, GEAR	02A-0650	
				02A-0700	
17	950588	1	Pin		
18	467055	3	Washer, WASHER	02A-0650	
				02A-0700	
19	467052	1	Lock washer, WASHER	02A-0650	
				02A-0700	
20	940128	3	Screw, SCREW	02A-0650	
				02A-0700	
21	421079	1	Gear		SEE GROUP 2C
22		1	GEAR, OIL PUMP		INCL.IN OIL PUMP
23		1	GEAR SEA WATER PUMP		SEE GROUP 2B
24	896632	1	Cover		
25	942083	1	· Seal	IK	
26	471055	1	· Sealing ring	IK	
27	421061	1	Gasket	IK	
28	955530	1	Screw		L = 83 MM
	955532	5	Screw		L = 95 MM
	955532	1	Screw		L = 95 MM ALT
	955533	1	Screw		L = 102 MM ALT
29	940186	10	Screw		L = 38 MM
	955526	4	Screw		L = 51 MM
30	941907	21	Spring washer		
31	420183	1	Cover		
32	420213	1	Seal	IK	
33	940115	2	Screw		
34	942336	2	Spring washer		
35	940097	2	Washer		
36	420183	1	Cover		
37	820751	1	Gasket	IK	
38	940115	2	Screw		
39	942336	2	Spring washer		
40	955525	5	Screw		
41	941571	5	Lock washer		
42		1	DRIVING DEVICE FUEL INJECT. PUMP		SEE GROUP 2C
43		1	CIRCULATION PUMP		SEE GROUP 2B

