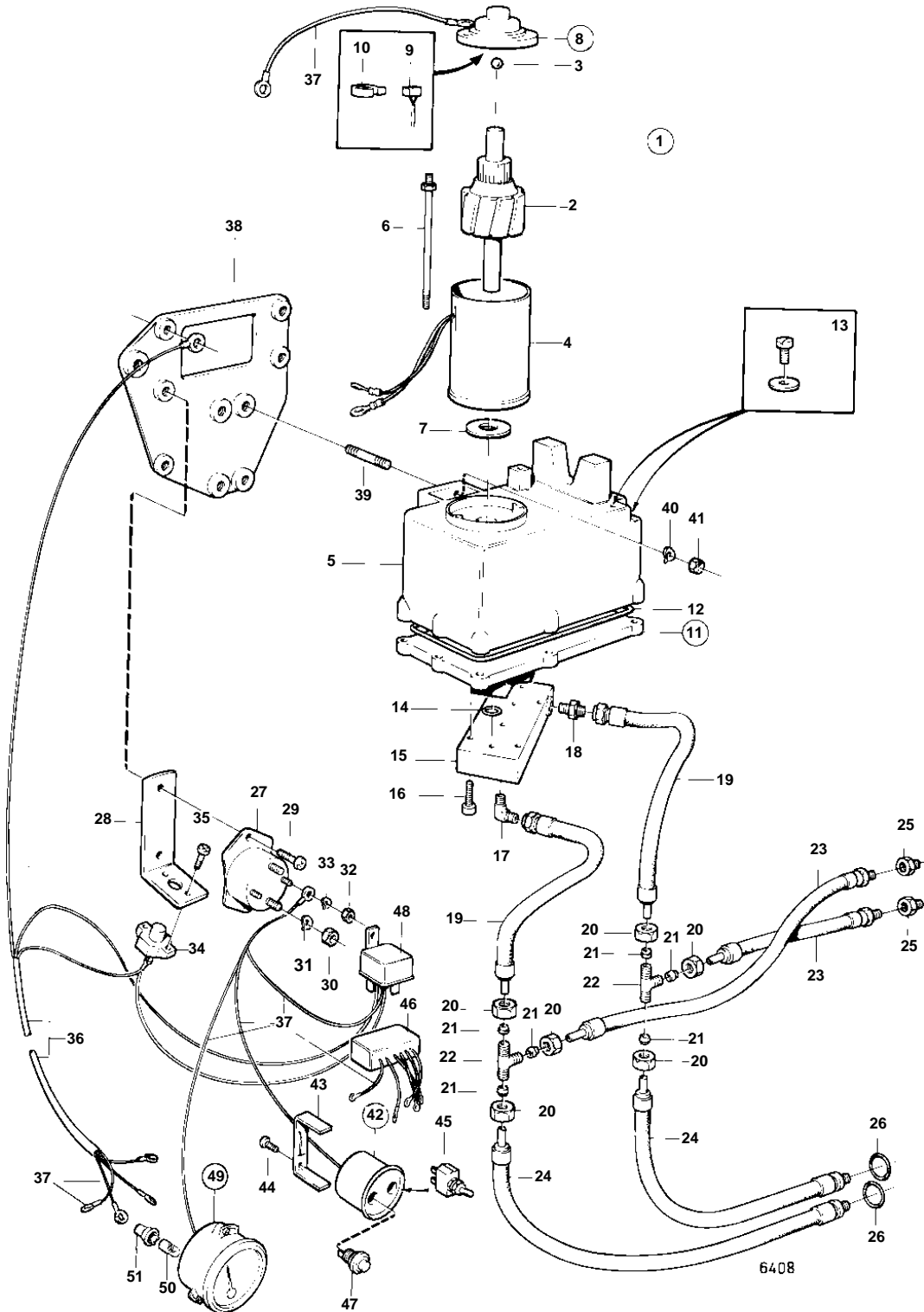


COMMON



## COMMON

REF	PART NO.	QTY	DESCRIPTION	NOTES
1	850922	1	Hydraulic pump	REPLACED BY HYDRAULIC PUMP 852500 + BRACKET 852568 + 4EA SCREW 950161 + 4EA NUT 955826.
2	851086	1	• Rotor	
3	851087	1	• Ball	
4	851088	1	• Housing	
5	851089	1	• Oil reservoir	
6	851091	1	• Screw kit	
7	851092	X	• Washer kit	
8	851083	1	• Housing	
9	851084	1	• • Carbon brush set	
10	851090	1	• • Spring kit	
11	851080	1	• Pump unit	REPL BY 852563
	852563	1	• Pump unit	
12	851085	1	• • Sealing ring	INCLUDED IN PUMP-851080.
13	851079	1	• Screw kit	
14	851081	1	• O-ring	
15	851082	1	• Valve housing	REPLACED BY 1 EAS PUMP-852500,1 EAS BRACKET-852568, 4EA SCREW-950161 AND 4EA NUT-955826.
16	955641	4	• Screw	
17	850916	1	Nipple	
18	850903	1	Fitting	
19	850910	2	Hose	
20	941521	6	Nut	
21	956967	6	Fitting	
22	964034	2	T-nipple	
23	850909	2	Hose	
24	850908	2	Hose	
25	851042	2	Nipple	
26	941820	2	O-ring	
27	852565	2	Relay	(850923)
28	850905	1	Bracket	REPLACED BY BRACKET 852568 + 4EA SCREW 950161 + 4EA NUT 955826.
29	950046	3	Screw	
30	955834	4	Nut	
31	941907	4	Spring washer	
32	955844	4	Nut	
33	941905	4	Spring washer	
34	841178	1	Fuse	
35	950013	2	Screw	
36	850836	1	Cable	REPLACED BY CABLE 852191 + CABLE 852192.
37		X	CABLES AND CABLE TERMINALS	SEE GROUP 3
38	850803	1	Bracket	REPLACED BY BRACKET 852568 + 4EA SCREW 950161 + 4EA NUT 955826.
39	941872	4	Stud	
40	941906	4	Spring washer	
41	955825	4	Nut	
42	850989	1	Instrument panel	USA
	851871	1	Instrument panel	(851501) EXCL USA
43	850372	1	• Brace	
44	944201	2	• Screw	
45	814322	1	• Switch	
46	851870	1	• Trimming limiter	(851771)
47	852026	1	• Switch	
48	876040	1	• Relay kit	
49	851502	1	• Trim indicator	EXCL USA. INCLUDED ONLY IN 851501.
50	192451	1	• • Bulb	
51	841954	1	• • Bulb socket	