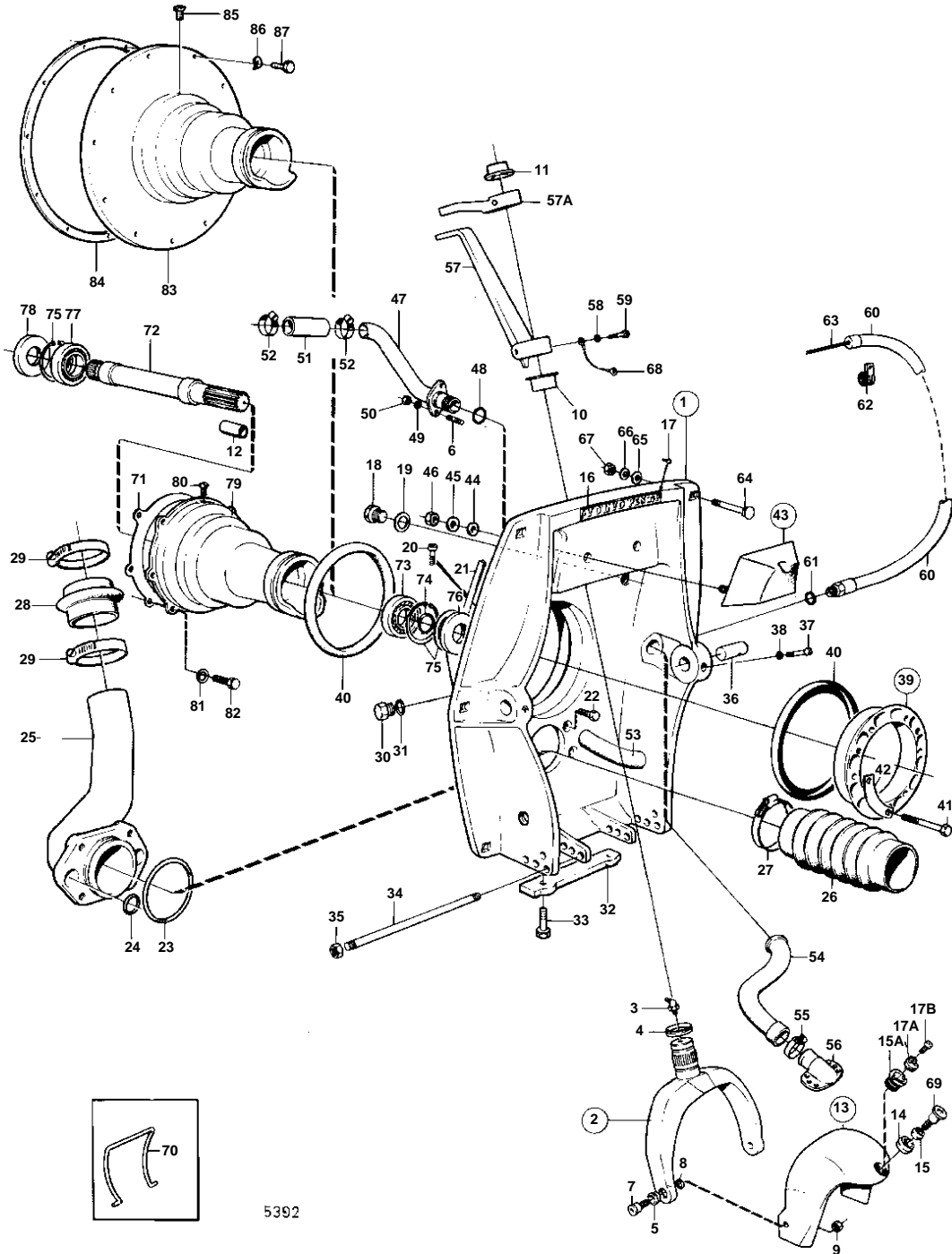


AQD40A,AQAD40A,AQAD40B



## AQD40A,AQAD40A,AQAD40B

REF	PART NO.	QTY	DESCRIPTION	SEE SEC.	NOTES
1	875635	1	Clamping ring		REPLACED BY 1EA 875672 1EA 851265 1EA 851263 2EA 941807.
	875672	1	Shield		MOXXXX/187080-
2	839441	1	• Steering yoke		
3	914169	1	• • Lubricating nipple		
4	839195	1	• • Ring	IK	
			• • Bulletin 48-23	48-23-EN	Seal Ring
5	814640	2	• • Bushing		
6	941872	2	• Stud		
7	897798	2	• Shoulder screw		
8	897244	2	• Washer		
9	943152	2	• Nut		
10	853863	1	• Bushing		(853496)
11	853864	1	• Bushing		(853497)
12	850653	1	• Bushing		SEE GROUP 6
13	839592	1	• Protective helmet		MO-XXXX/187079
	851267	1	• Protective helmet		MOXXXX/187080-
14	839698	1	• • Bushing		FOR M18 BOLTS.
15	839697	1	• • Bushing		MO-XXXX/187079
15A	851262	1	• • Bushing		REPL BY 853048. FOR BEARING PIN WITH 2 BOLTS.
	853048	1	• • Bushing		FOR BEARING PIN WITH 2 BOLTS.
16	832608	1	• Sign		
17	804269	2	• Drive screw		
17A	852705	1	Pivot pin, BEARING TAP		(851263)
					MOXXXX/187080-
17B	941807	2	Screw		MOXXXX/187080-
18	897744	1	Plug		
19	897745	1	Gasket	IK	
20	956568	2	Screw		SEE GROUP 9
21	897726	1	Sealing strip		
22	959967	4	Screw		
23	925256	1	O-ring	IK	
24	925055	4	O-ring	IK	
25	842962	1	Exhaust grommet		
26	875828	1	Bellows kit		(850004)
		1	• BELLOWS		
27	961675	2	• Hose clamp		
28	843228	1	Exhaust hose		SEE GROUP 2B
29	943483	2	Hose clamp		SEE GROUP 2B
30	897744	1	Plug		
31	897745	1	Gasket	IK	
32	832598	1	Zinc electrode		
33	959438	2	Screw		
34	814301	1	Adjuster pin		
35	814357	2	Flange nut		
36	853175	2	Pivot pin		(897831)
37	941873	2	Screw		
38	941670	2	Washer		
39	843626	1	Clamping ring kit		
40	813967	2	• Rubber ring		
41	191844	6	• Screw		
42	806624	3	• Striker plate		
43	875531	1	Rubber cushion		
44	832565	2	• Gasket		
45	960142	2	• Washer		
46	950364	2	• Nut		
47	850697	1	Grommet		MO-1507. FOR EARLY TYPE OF STEERING SYSTEM.
	850729	1	Grommet		MO1508-. FOR LATE TYPE OF STEERING SYSTEM.
48	925063	1	O-ring		
49	955893	2	Washer		
50	950352	2	Lock nut		
51	952973	X	Hose		L = 140 MM MO-1507. FOR EARLY TYPE OF STEERING SYSTEM.

## AQD40A,AQAD40A,AQAD40B

REF	PART NO.	QTY	DESCRIPTION	SEE SEC.	NOTES
51	941799	X	Hose		L = 400 MM MO1508-. FOR LATE TYPE OF STEERING SYSTEM.
52	961670	2	Hose clamp		SEE GROUP 2B
53	843235	2	Rubber hook		
54	875822	1	Hose kit		(897599)
		1	· HOSE		
55	853548	2	· Hose clamp		(961668)
56	851766	1	Hose connection		(832846) SEE GROUP 4C
57	842871	1	Spindle arm		SEE GROUP 6 MO-1507. FOR EARLY TYPE OF STEERING SYSTEM.
57A	850488	1	Spindle arm		SEE GROUP 6 MO1508-. FOR LATE TYPE OF STEERING SYSTEM.
58	940097	1	Washer		
59	955537	1	Screw		
60	839091	1	Hose		
61	897745	1	Gasket		
62	952635	1	Clamp		
63		X	CONTROL CABLE		SEE GROUP 9
64	943426	6	Screw		
65	850418	6	O-ring		
66	190878	6	Washer		
67	940176	6	Nut		
68		X	CABLES AND CABLE TERMINALS		SEE GROUP 3
69		1	BEARING BOLT		SEE GROUP 4C MO-XXXX/187079 FOR TRANSPORT.
70	897824	1	Conveyer stop		
71	803921	1	Gasket		
72	839425	1	Shaft		
73	181105	1	Ball bearing		
74	914462	1	Lock ring		
75	914533	3	Snap ring		
76	958860	1	Sealing ring		
77	11013	1	Ball bearing		
78	958860	1	Sealing ring		
79		1	PRIMARY SHAFT HOUSING		REPL BY 844519
80	804262	1	Plug		
81	941909	6	Spring washer		
82	955319	6	Screw		
83	844519	1	Flywheel housing		LATE TYPE SEE GROUP 2A
84	829488	1	Gasket		
85	804262	1	Plug		
86	941909	11	Spring washer		
87	955319	11	Screw		