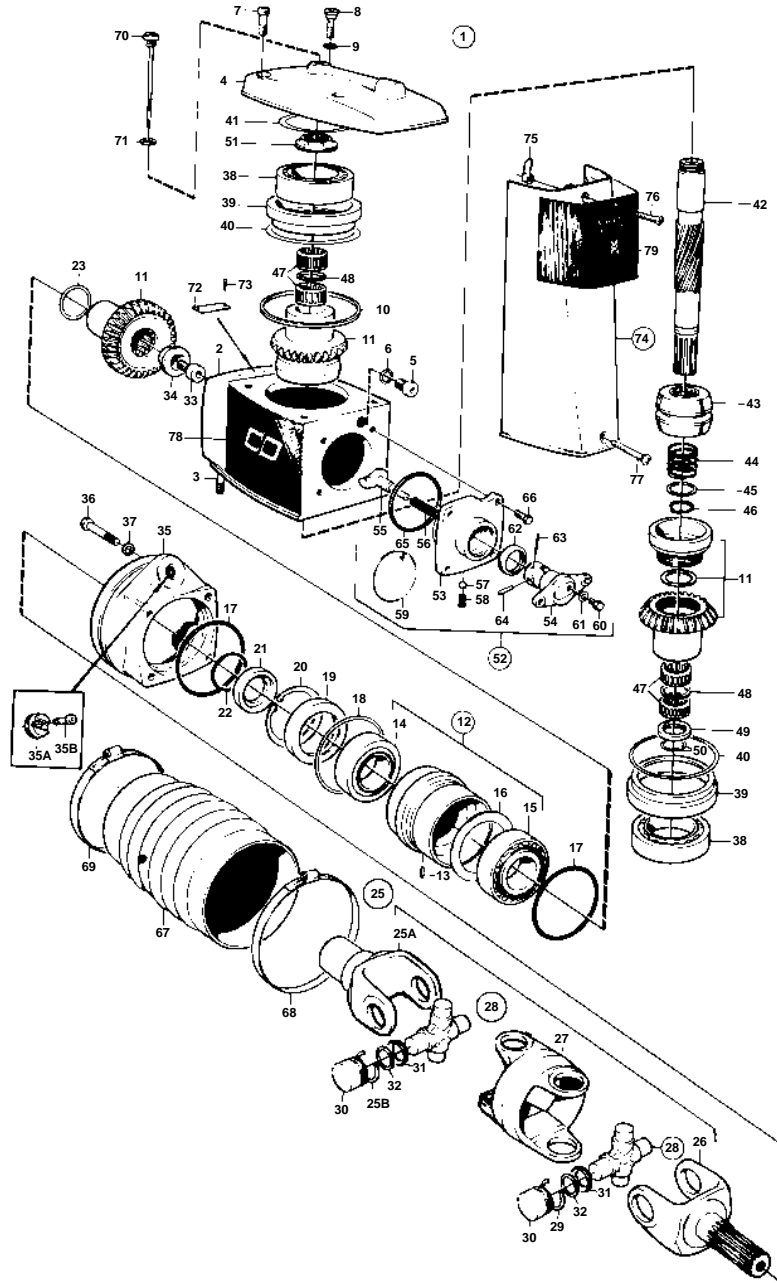


DRIVE DP280,DRIVE DP290



8589

DRIVE DP280,DRIVE DP290

REF	PART NO.	QTY	DESCRIPTION	SEE SEC.	NOTES
1	851340	1	Upper gear unit		
2	832674	1	· Housing		
3	941814	2	· Stud	04C-0500	
4	832667	1	· Gear housing cover		
5	814179	1	· Plug		
6	897682	1	· Gasket	IK	
7	941807	3	· Screw		
8	814643	1	· Hollow screw		
9	955989	1	· O-ring	IK	
10	832669	1	· Gasket	IK	
11	839027	1	· Drive gear set		
12	875425	1	· Bearing box		
13	951940	1	· · Tensioning din		
14	183247	1	· · Bearing		
15	183668	1	· · Roller bearing		
16	897772	1	· · Oil deflector		EARLY TYPE
17	925256	2	· O-ring	IK	
18	941826	X	· Adjusting washer		TH = 0,50 MM
	941827	X	· Adjusting washer		TH = 0,20 MM
	948230	X	· Shim		TH = 0,35 MM
19	839253	1	· Sealing ring	IK	
20	914538	1	· Lock ring		
21	832675	1	· Washer		
22	956000	1	· O-ring	IK	
23	943871	X	· Shim		TH = 0,05 MM
	943872	X	· Shim		TH = 0,10 MM
	943873	X	· Shim		TH = 0,20 MM
24	839028	1	· Joint		
			· Bulletin P-44-1-5	P-44-1-5-EN	U-joints
25	853560	1	· · Joint fork kit		
			· · Bulletin P-44-1-5	P-44-1-5-EN	U-joints
25A	897774	1	· · Joint fork		REPL BY 853560
			· · Bulletin P-44-1-5	P-44-1-5-EN	U-joints
25B	853331	2	· · · Lock ring		FOR 853255.
26	839026	1	· · Steering yoke		
27	897706	1	· · Intermediate section		
28	897707	2	· · Cross piece		REPLACED BY 853455.. FOR DRIVE UNITS 853452,853453 PZ-29500949.
	853255	2	· · Cross piece		FOR DRIVE UNITS 853452,853453 PZ29500950-.
29	897776	4	· · · Lock ring		FOR 897707
	853331	4	· · · Lock ring		FOR 853255
30		8	· · · NEEDLE BEARING		
31		8	· · · PROTECTOR RING		
32		8	· · · CORK RING		
33	851293	1	· Screw		
34	839013	1	· Washer		
35	851265	1	· Clamping ring		
35A	852705	1	· Pivot pin		
35B	941807	2	· Screw		
36	956590	4	· Screw		
37	942598	4	· Washer		
38	853542	2	· Ball bearing		(183729)
39	832644	2	· Bearing sleeve		
40	943869	X	· Adjusting washer		TH = 0,05 MM
	946179	X	· Adjusting washer		TH = 0,10 MM
	943870	X	· Adjusting washer		TH = 0,20 MM
41	967352	X	· Adjusting washer		TH = 0,05 MM
	943866	X	· Adjusting washer		TH = 0,10 MM
	943867	X	· Adjusting washer		TH = 0,20 MM
	943868	X	· Adjusting washer		TH = 0,40 MM
42	897385	1	· Shaft		
43	814601	1	· Sliding sleeve		
			· Bulletin P-44-1-8	P-44-1-8-EN	Shift mechanism, shift cone and shoe

DRIVE DP280,DRIVE DP290

REF	PART NO.	QTY	DESCRIPTION	SEE SEC.	NOTES
44	813970	1	• Spring		
45	26411	1	• Spacer		
46	951077	1	• Lock ring		
47	181359	4	• Needle bearing		
48	897308	2	• Spacer ring		
49	897313	1	• Spacer ring		
50	897312	2	• Lock ring		
51	839332	1	• Nut		TH = 2,00 MM
	839333	1	• Nut		TH = 2,37 MM
	839334	1	• Nut		TH = 2,65 MM
52	839504	1	• Shift mechanism		
53	839505	1	• • Bearing housing		
54	897816	1	• • Eccentric piston		
			• • Bulletin P-44-1-7	P-44-1-7-EN	Shift mechanism, eccentric piston
55	814603	1	• • Dog		
56	814184	1	• • Spring		
57	60309	2	• • Ball		PZ-2829528
58	839136	2	• • Spring		PZ-2829528
59	941338	X	• • Locking wire	IK	PZ-2829528, L = 300 MM
60	897711	1	• • Screw		
61	897871	X	• • Adjusting washer		TH = 0,2 MM
62	958838	1	• • Sealing ring	IK	
63	951924	1	• • Tensioning din	IK	
64	942871	1	• • Pin		
65	925093	1	• • O-ring	IK	
66	940169	4	• Screw		
67	875826	1	• Bellows kit		
		1	• • BELLOWS		
68	853013	1	• • Hose clamp		(961677)
69	853012	1	• • Hose clamp		(961676)
70	839351	1	• Oil dipstick		
71	955974	1	• O-ring	IK	
72	814687	1	• Sign		
73	804269	2	• Drive screw		
74	832570	1	Cover		INCLUDED IN DRIVE UNIT 852411, 852412.
75	897873	1	• Latch		
76	943218	1	• Screw		
77	941816	1	Screw		INCLUDED IN DRIVE UNIT 852411, 852412.
78	852823	2	Decal		INCLUDED IN DRIVE UNIT 852411, 852412.
79	852824	1	Decal		INCLUDED IN DRIVE UNIT 852411, 852412.