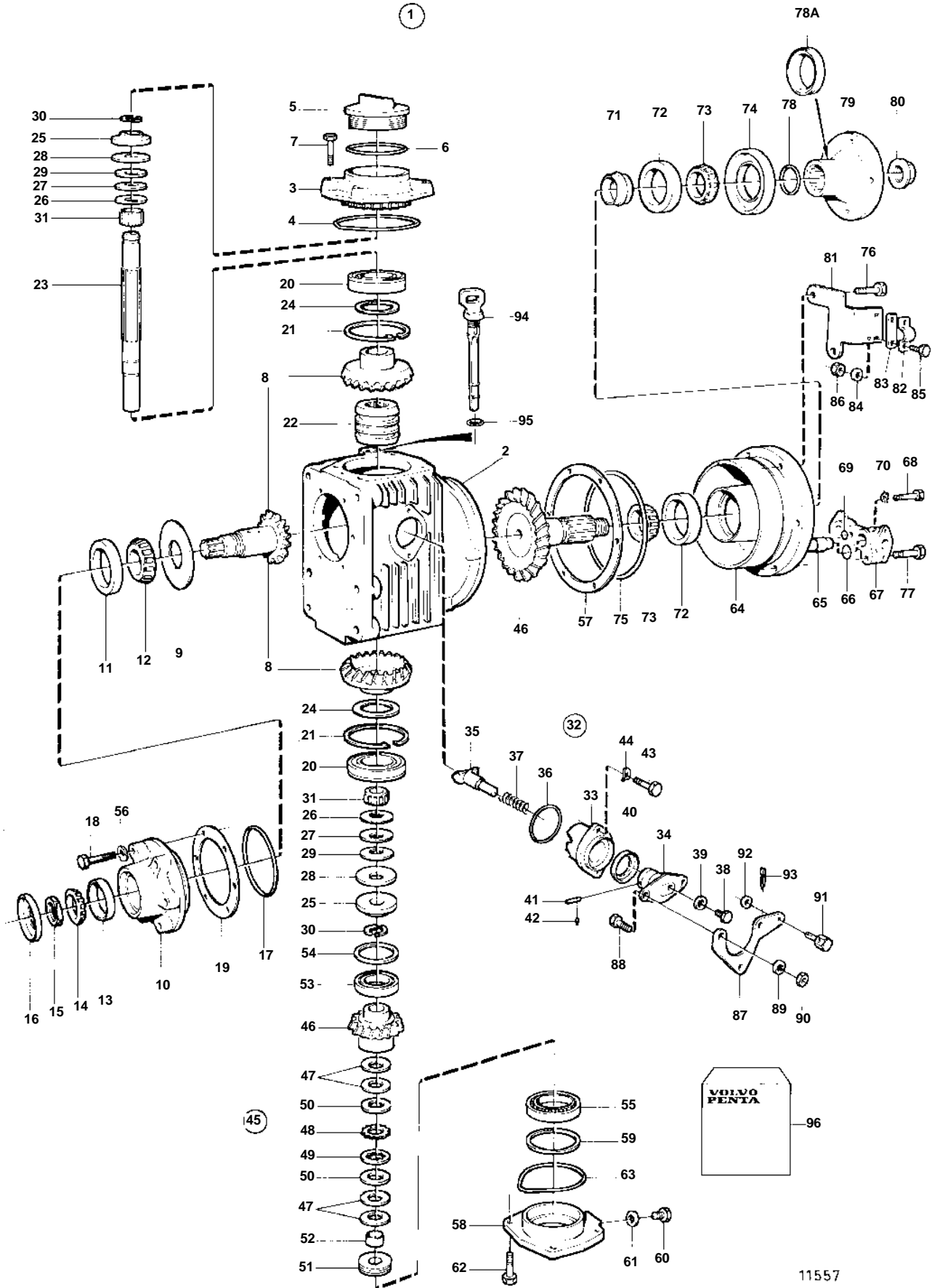


MS2A-E



11557

## MS2A-E

REF	PART NO.	QTY	DESCRIPTION	NOTES
1	873078	1	Reversing gear	
2	3856827	1	• Gear housing	(873092)
3	873123	1	• Cover	
4	949962	1	• O-ring	Included in gasket kit.
5	851754	1	• Oil filler cap	
6	1664473	1	• O-ring	(925254). Included in gasket kit.
7	946671	4	• Flange screw	
8	873095	1	• Gear set	
9	851621	1	• Guide disc	
10	872710	1	• Bearing box	
11	181302	1	• Cup	
12	181301	1	• Inner ring	
13	183750	1	• Cup	
14	183752	1	• Inner ring	
15	852485	1	• Lock nut	
16	873094	1	• Sealing ring	
17	925093	1	• O-ring	
18	940101	6	• Screw	
19	851622	X	• Shim	TH = 0,10mm
	851623	X	• Shim	TH = 0.15mm
	851624	X	• Shim	TH=0.35mm
20	851756	2	• Bearing	
21	852190	2	• Lock ring	
22	873098	1	• Sliding sleeve	
23	873099	1	• Shaft	
24	941835	X	• Shim	TH = 0,05mm, D = 71mm
	852184	X	• Shim	TH = 0,05mm, D = 43mm
	84219	X	• Shim	TH = 0,10mm
	949776	X	• Shim	TH = 0.15mm
	84218	X	• Spacer	TH=0.35mm
25	852079	2	• Lock washer	
26	852311	2	• Washer	TH=0,40mm
27	852317	2	• Washer	TH = 0,80mm
28	852213	2	• Disc spring	
29	852080	6	• Disc spring	
30	851629	4	• Lock ring half	
31	851757	2	• Needle bearing	
32	851661	1	• Shift mechanism	
33	851662	1	• • Bearing housing	
34	3856008	1	• • Eccentric piston	
35	851664	1	• • Dog	
36	949659	1	• • O-ring	(925065). Included in gasket kit.
37	814184	1	• • Spring	
38	897711	1	• • Screw	
39	897871	X	• • Shim	TH=0,20mm
40	853868	1	• • Sealing ring	(873291). Included in gasket kit.
41	942871	1	• • Pin	
42	973593	1	• • Pin	
43	955296	2	• Screw	
44	941907	2	• Spring washer	
45	852438	1	• Gear set	
46		2	• • Gear	
47		4	• • Washer	
48		18	• • Discouter	
49		17	• • Discinner	
50		2	• • Thrust washer	
51		1	• • Adjuster screw	
52		1	• • Bushing	
53	183518	1	• Bearing	
54	851705	X	• Shim	TH = 0,10mm

## MS2A-E

REF	PART NO.	QTY	DESCRIPTION	NOTES
54	851706	X	· Shim	TH = 0.15mm
	851707	X	· Shim	TH=0.35mm
55	183842	1	· Roller bearing	
56	941906	6	· Spring washer	
57	851702	X	· Shim	TH = 0,10mm
	851703	X	· Shim	TH = 0.15mm
	851704	X	· Shim	TH=0.35mm
58	873124	1	· Bearing cover	
59	87655	X	· Shim	TH = 0,10mm
	191840	X	· Shim	TH = 0.15mm
	87654	X	· Spacer	TH=0.35mm
60	960629	1	· Plug	
61	947084	1	· Gasket	Included in gasket kit.
62	946671	4	· Flange screw	
63	925256	1	· O-ring	Included in gasket kit.
64	873125	1	· Bearing housing	
65	852159	1	· Oil cooler	
66	943309	2	· O-ring	Included in gasket kit.
67	873212	1	· Pipe connection	
68	969357	1	· Flange screw	L=55mm (955279)
69	949750	1	· O-ring	Included in gasket kit.
70	941906	1	· Spring washer	
71	851974	1	· Collet	
72	181302	2	· Cup	
73	181301	2	· Inner ring	
74	873100	1	· Sealing ring	Included in gasket kit.
75	925262	1	· O-ring	Included in gasket kit.
76	946470	2	· Flange screw	L=35mm
	947760	2	· Flange screw	
77	965180	2	· Flange screw	
78	949721	1	· O-ring	(925062). Included in gasket kit.
78A	944138	1	· Sealing ring	Included in gasket kit.
79	852076	1	· Companion flange	
80	947855	1	· Lock nut	
81	852168	1	· Bracket	
82	819067	1	· Brace	
83	819068	1	· Washer	
84	940090	2	· Washer	
85	955246	2	· Screw	
86	946577	2	· Lock nut	
87	852363	1	· Lever	
88	955270	2	· Screw	
89	955948	2	· Lock washer	
90	955781	2	· Nut	
91	833462	1	· Cube	
92	955892	1	· Washer	
93	17276	1	· Cotter pin	
94	873087	1	· Oil dipstick	
95	925055	1	· O-ring	
96	875704	1	Gasket kit	SEE GROUP 99