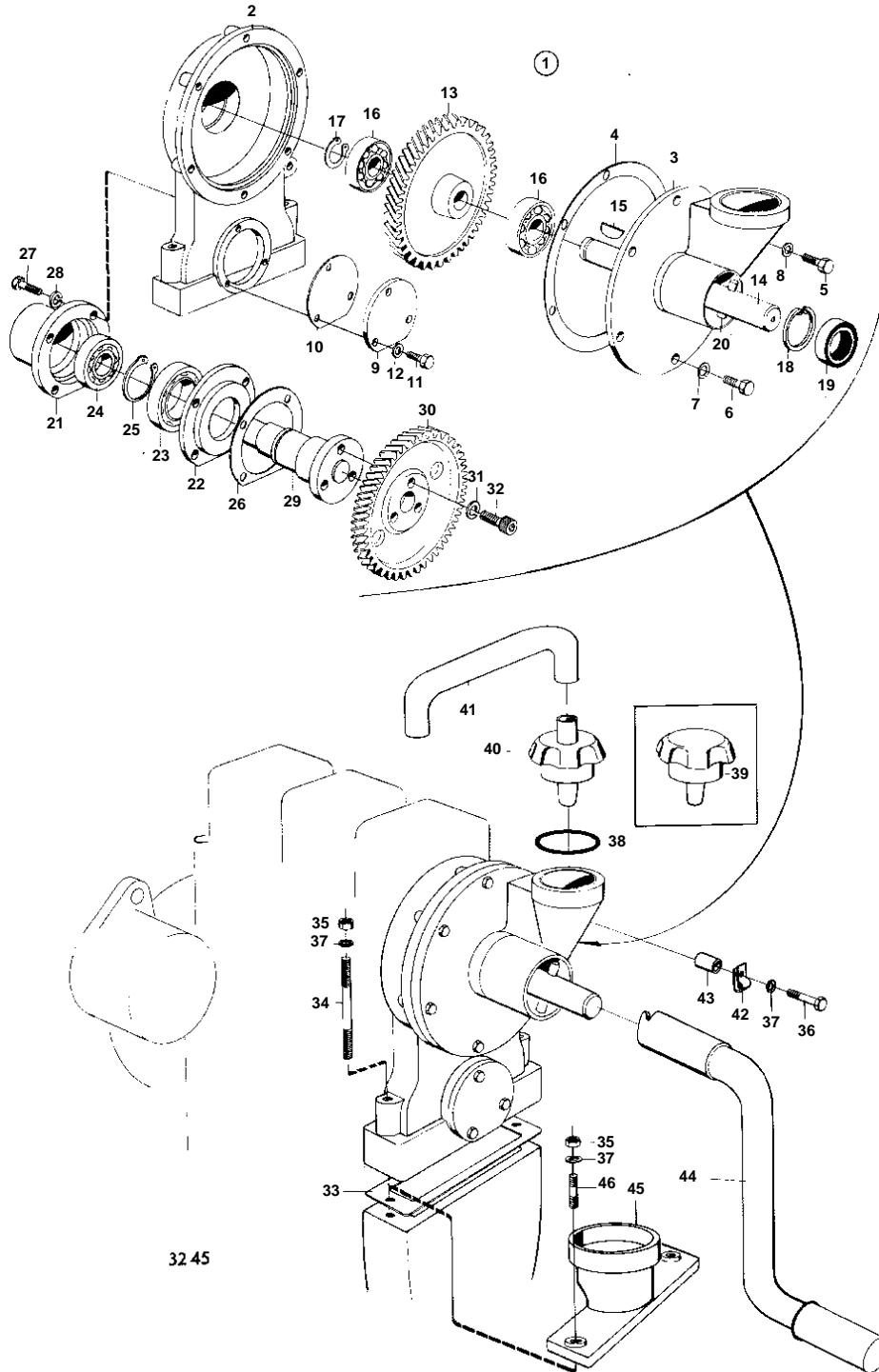


MD3B



**MD3B**

REF	PART NO.	QTY	DESCRIPTION	NOTES
1	807283	1	Hand start	SPEC 867146, 867147, MO-1755 EXCEPT 1668-1670.
2		1	• HOUSING	
3	803330	1	• Bushing	
4	807276	1	• Gasket	IK
5	955271	5	• Screw	
6	955270	1	• Screw	
7	941906	1	• Spring washer	
8	11991	5	• Seal	IK
9	897254	1	• Cover	
10	897255	1	• Gasket	IK
11	940102	3	• Screw	
12	18806	3	• Washer	IK
13	807280	1	• Gear	
14	807281	1	• Shaft	
15	910117	1	• Key	
16	181113	2	• Ball bearing	
17	914454	1	• Snap ring	
18	914524	1	• Lock ring	
19	833760	1	• Sealing ring	IK
20	952007	1	• Tensioning din	
21	807277	1	• Bearing housing	
22	807360	1	• Spacer	
23	18559	1	• Ball bearing	
24	181180	1	• Ball bearing	
25	914459	1	• Lock ring	
26	807278	2	• Gasket	IK
27	955271	4	• Screw	
28	941906	4	• Spring washer	
29	807279	1	• Shaft	
30	840370	1	• Gear	(803344)
31	941906	3	• Spring washer	
32	942001	3	• Screw	
33	803361	X	Gasket	IK SPEC 867146, 867147, MO-1755 EXCEPT 1668-1670.
34	952989	2	Stud	L = 80 MM. SPEC 867146, 867147, MO-1755 EXCEPT 1668-1670.
35	955782	2	Nut	SPEC 867146, 867147, MO-1755 EXCEPT 1668-1670.
36	955295	1	Screw	L = 20 MM. SPEC 867146, 867147, MO-1755 EXCEPT 1668-1670.
37	941907	3	Spring washer	SPEC 867146, 867147, MO-1755 EXCEPT 1668-1670.
38	940096	1	Gasket	IK SPEC 867146, 867147, MO-1755 EXCEPT 1668-1670.
39	403515	1	Vent cover	EARLY TYPE
40	418954	1	Vent cover	LATE TYPE. SPEC 867146, 867147, MO-1755 EXCEPT 1668-1670.
41	833747	1	Hose	SPEC 867146, 867147, MO-1755 EXCEPT 1668-1670.
	833671	1	Rubber hose	SPEC 867146, 867147 WITHOUT MANUAL STARTER.
42	940374	1	Clamp	SPEC 867146, 867147, MO-1755 EXCEPT 1668-1670.
43	823492	1	Spacer sleeve	SPEC 867146, 867147, MO-1755 EXCEPT 1668-1670.
44	803920	1	Starter crank	SPEC 867146, 867147, MO-1755 EXCEPT 1668-1670.
45	833601	1	Ventilation housing	SPEC 867146, 867147 WITHOUT MANUAL STARTER.
46	924060	2	Stud	SPEC 867146, 867147 WITHOUT MANUAL STARTER.