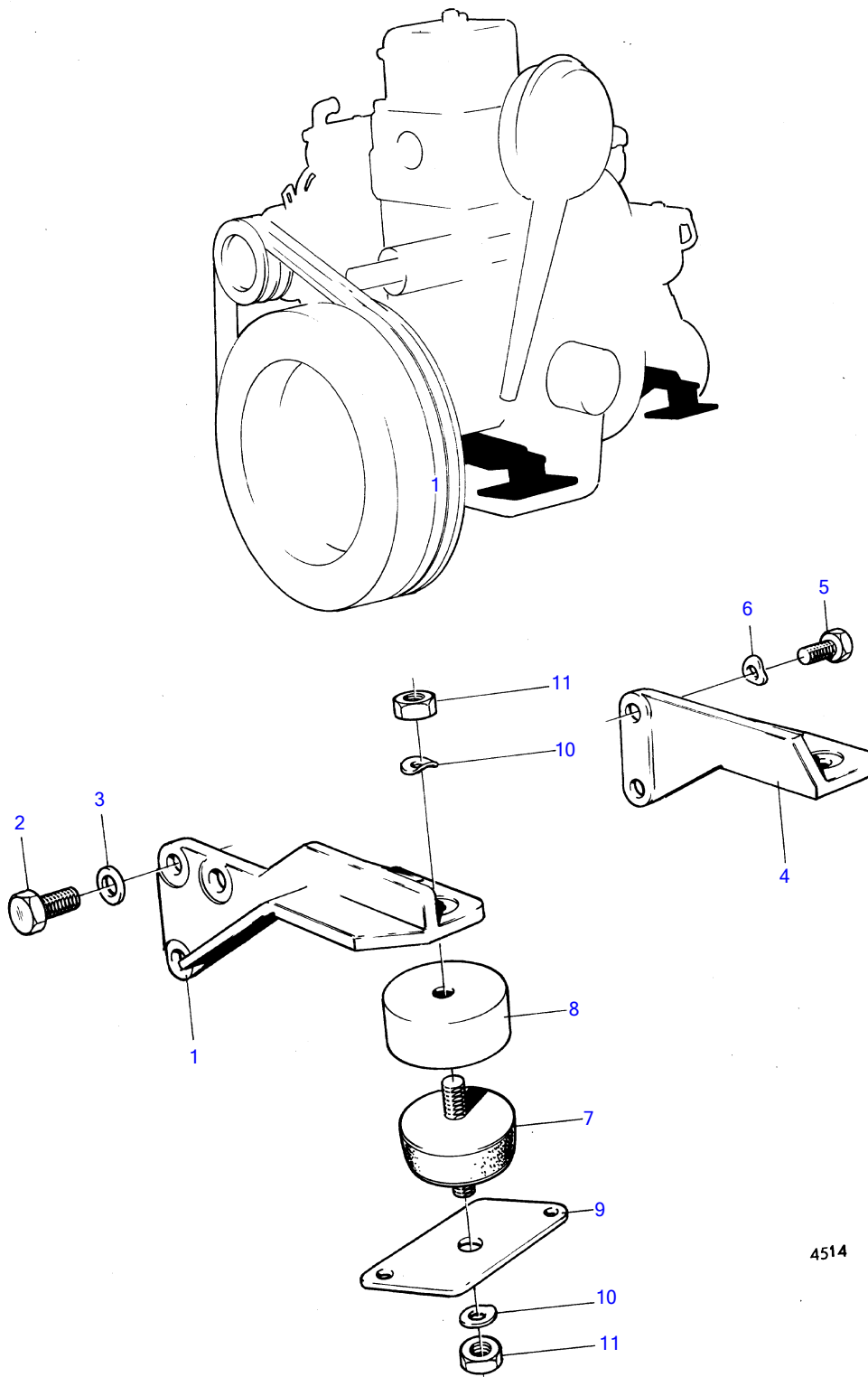


MD1B



MD1B

| REF | PART NO. | QTY | DESCRIPTION | NOTES |
|-----|----------|-----|-----------------|--|
| 1 | (833246) | 1 | Engine bracket | Narrow brackets. spec 867001, 867002, 867091., Obsolete part |
| | (833575) | 1 | Engine bracket | Wide brackets. spec 867140, 867141, 867142, 867229., Obsolete part, S.B |
| | (833247) | 1 | Engine bracket | Obsolete part, Narrow brackets. spec 867001, 867002, 867091., P |
| | (833576) | 1 | Engine bracket | Obsolete part, Wide brackets. spec 867140, 867141, 867142, 867229., P |
| 2 | 955322 | 4 | Hexagon screw | L=50mm |
| | 955320 | 2 | Hexagon screw | L=40mm |
| 3 | 946075 | 6 | Washer | |
| 4 | (803428) | 1 | Bracket | Obsolete part, Narrow brackets. spec 867001, 867002, 867091., S.B |
| | (833540) | 1 | Engine bracket | Obsolete part, Wide brackets. spec 867140, 867141, 867142, 867229., Replaced by 833540., (833572) SB |
| | (897363) | 1 | Bracket | Obsolete part, Narrow brackets. spec 867001, 867002, 867091., P |
| | (833541) | 1 | Engine bracket | Obsolete part, Wide brackets. spec 867140, 867141, 867142, 867229., P |
| 5 | 955317 | 2 | Hexagon screw | L=25mm |
| | 955332 | 1 | Hexagon screw | L=120mm |
| | (192357) | 1 | Screw | Obsolete part, L=115mm |
| 6 | 941908 | 2 | Spring washer | |
| | 940109 | 2 | Toothed washer | |
| 7 | 833720 | 4 | Rubber cushion | Soft rubber blocks. |
| | 833625 | 4 | Rubber cushion | Hard rubber blocks., Narrow brackets. |
| 8 | 807228 | 4 | Sleeve | |
| 9 | 833571 | 4 | Bracket | Soft rubber blocks., Hard rubber blocks. |
| | 807226 | 4 | Attaching plate | For narrow brackets and hard rubber blocks. |
| 10 | 940280 | 8 | Spring washer | |
| 11 | 955850 | 8 | Hexagon nut | |