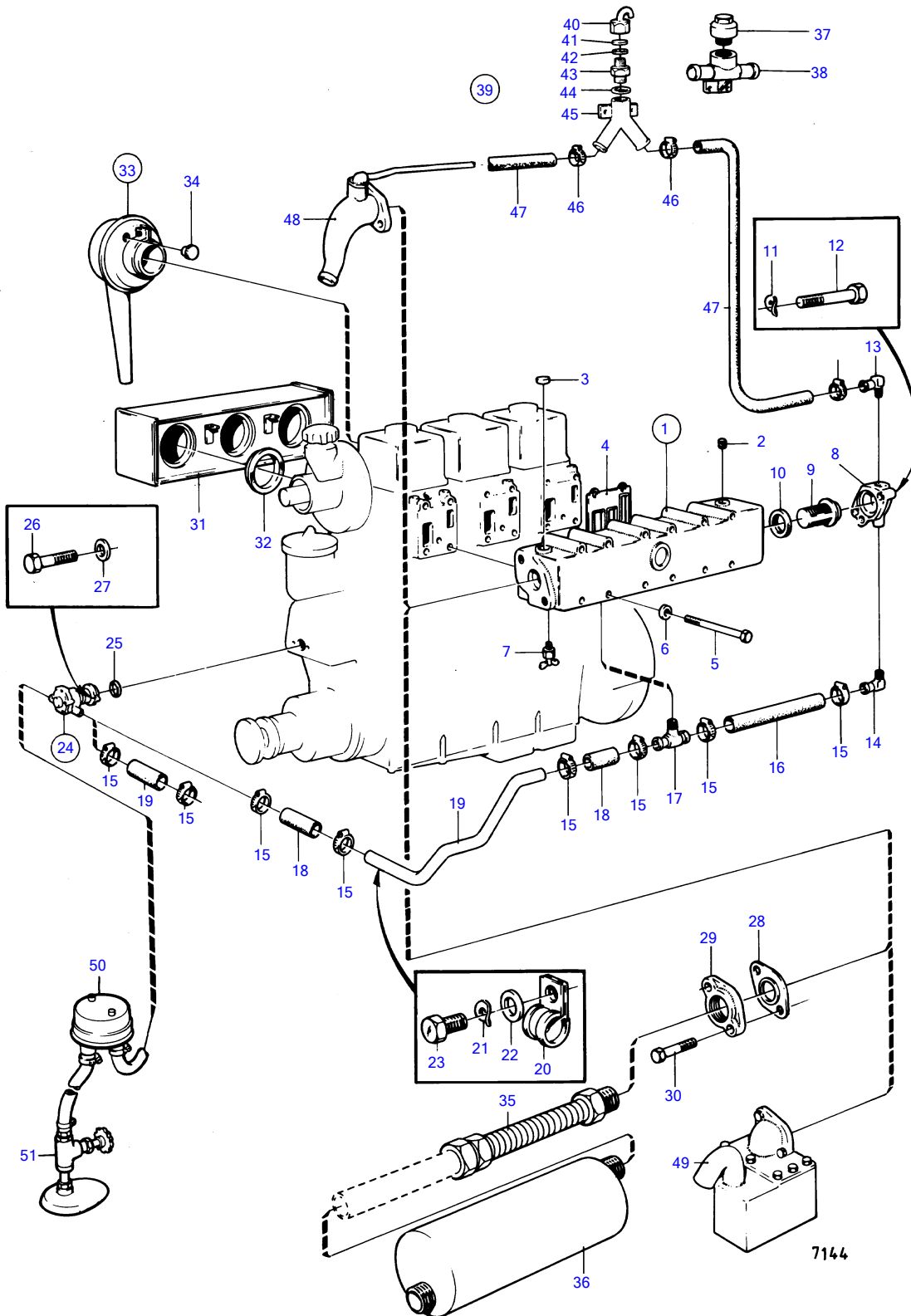


MD3B



## MD3B

REF	PART NO.	QTY	DESCRIPTION	SEE SEC.	NOTES
1	(833007)	1	Exhaust pipe		Obsolete part
2	(190682)	1	• Plug		Early type, Obsolete part
3	192211	5	• Expansion plug		
4	833598	3	Gasket		
5	940129	12	Hexagon screw		
6	955894	12	Washer		
7	807036	1	Shut-off cock		
8		1	thermostat housing		Replaced by 897330 + 801197 + 955989., Early type
9	876080	1	Thermostat kit		62°C
10	416033	1	Sealing ring		(418361) MO-16292
11	941907	2	Spring washer		
12	955299	2	Hexagon screw		
13	801197	1	Hose attachment		
14	945341	1	Hose attachment		Early type
15	943472	6	Hose clamp		
16	952969	X	Hose		L=290mm
17	(833356)	1	Hose attachment		Obsolete part
18	952969	X	Hose		L=2X70mm
19	(833119)	1	Tube		Obsolete part, MD17C, MD17C/HD-BT, MD17C/HD-RB., MD17C/110S.
	(833744)	1	Coolant pipe		Obsolete part, MD3B spec 867119, 867231. MD17C spec 867211, 867340., Spec 867423.
20	952629	1	Clamp		
21	941906	1	Spring washer		MD17C/110S., MD17 spec 867423.
22	955892	1	Washer		MD17C/110S., MD17 spec 867423.
23	955273	1	Hexagon screw		MD17C/110S.
24	825916	1	Water pump		Replaced by 829895 + 829901 + 829898 + 2ea 418411 + 2ea 833878.
			•	13765	
25	925091	1	O-ring		
26	955272	2	Hexagon screw		MD17C, MD17C/HD-BT, MD17C/HD-RB.
27	11991	2	Gasket		MD17C, MD17C/HD-BT, MD17C/HD-RB.
28	803374	1	Gasket		
29	807050	1	Exhaust pipe flange		
30	955319	2	Hexagon screw		
31		1	• air intake muffler		Replaced by 3ea 833414., Early type
32	833348	3	Rubber ring		Early type
33	(833414)	3	Air filter		Obsolete part, Late type
34	(833546)	3	• Plug		Obsolete part
35	(833841)	1	Compensator		Obsolete part, Dry exhaust line.
36	833840	1	Muffler, dry		Dry exhaust line.
37		1	vacuum valve		Replaced by 828263, 828262., Early type
38		1	housing		Replaced by 828263, 828262., Early type
39	828534	1	Vacuum valve		(828263)
40		1	• upper unit		
41		2	• Diaphragm		
42	828424	2	• Gasket		
43		1	• lower part		
44	947282	2	• Gasket		
45	828262	1	Hose connection		Late type
46	961666	4	Hose clamp		
47	13569	X	Hose		
48	(833423)	1	Exhaust bellows		Obsolete part, See group 9, early type
	(833586)	1	Exhaust bellows		Obsolete part, See group 9
49		1	muffler, wet		See group 9, early type
	828064	1	Muffler		See group 9, late type
50	831733	1	Strainer		See group 9
51	828242	1	Cooling water inlet		See group 9