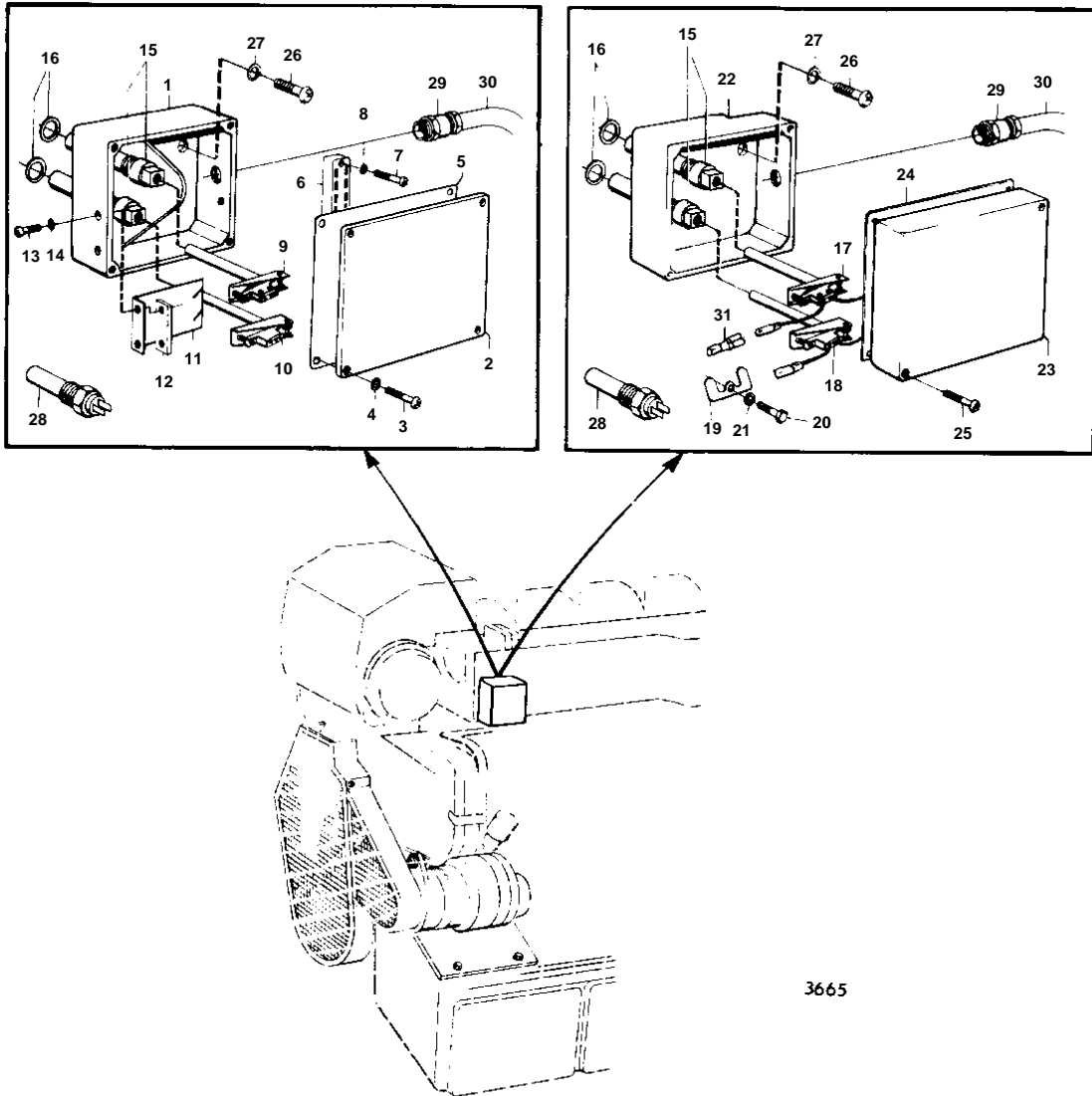


MD120A,TMD120A,TAMD120A,TAMD120B



THERMOSWITCH AND PROTECTING BOX WITH INSTALLATION COMPONENTS

030

MD120A,TMD120A,TAMD120A,TAMD120B

REF	PART NO.	QTY	DESCRIPTION	SEE SEC.	NOTES
1	836722	1	Housing		
2	836721	1	Cover		MO-XXXX/7699
3	950021	4	Screw		MO-XXXX/7699
4	955946	4	Lock washer		MO-XXXX/7699
5	837179	1	Gasket		MO-XXXX/7699
6	881079	1	Terminal block		MO-XXXX/7699
7	950011	2	Screw		MO-XXXX/7699
8	955945	2	Washer		MO-XXXX/7699
9	836716	1	Temperature contact		MO-XXXX/7699. REPLACED BY 1EA 841765 ALTERNATOR, 1EA 841812 PULLEY, 1EA 845021 TENSION IRON, 1EA 949607 WASHER, 1EA 955780 NUT, 1EA 955781 NUT AND 1EA 941905 RESILIENT WASHER.
10	836717	1	Temperature contact		MO-XXXX/7699. REPLACED BY 1EA 1578938.
11	836719	1	Clamp		MO-XXXX/7699
12	836720	1	Washer		MO-XXXX/7699
13	950020	2	Screw		MO-XXXX/7699
14	941905	2	Spring washer		MO-XXXX/7699
15	836718	2	Sleeve		
	836718	1	Sleeve		MOXXXX/31089-. FOR CHARGING OF 2 BATTERIES,USE CHARGE DISTRIBUTOR 831793
16	957184	2	Washer		
17	837472	1	Thermo monitor		MOXXXX/7700-. REPLACED BY 1EA 841765 ALTERNATOR, 1EA 841812 PULLEY, 1EA 845021 TENSION IRON, 1EA 949607 WASHER, 1EA 955780 NUT, 1EA 955781 NUT AND 1EA 941905 RESILIENT WASHER.
18	837473	1	Thermo monitor		MOXXXX/7700-. REPLACED BY 1EA 1578938.. MO-12769/XXXXX, REPLACED BY 841378.
19	837396	1	Lock washer		MOXXXX/7700-
20	956076	1	Screw		MOXXXX/7700-
21	941905	1	Spring washer		MOXXXX/7700-
22	837391	1	Housing		MOXXXX/7700-
23	837392	1	Cover		MOXXXX/7700-
24	837424	1	Gasket		MOXXXX/7700-
25	956301	2	Screw		MOXXXX/7700-
26	956568	1	Screw		L = 19 MM
	956567	2	Screw		L = 16 MM
27	955949	2	Lock washer		
28	827150	1	Temperature sensor		SEE GROUP 2B
	837044	1	Temperature sensor		SEE GROUP 2B. FOR CHARGING OF 2 BATTERIES,USE CHARGE DISTRIBUTOR 831793
29	881192	1	Cable union		
30			CABLES		CAN'T BE USED ON ALTERNATOR 841765.
31			CABLE TERMINAL	030-1950	