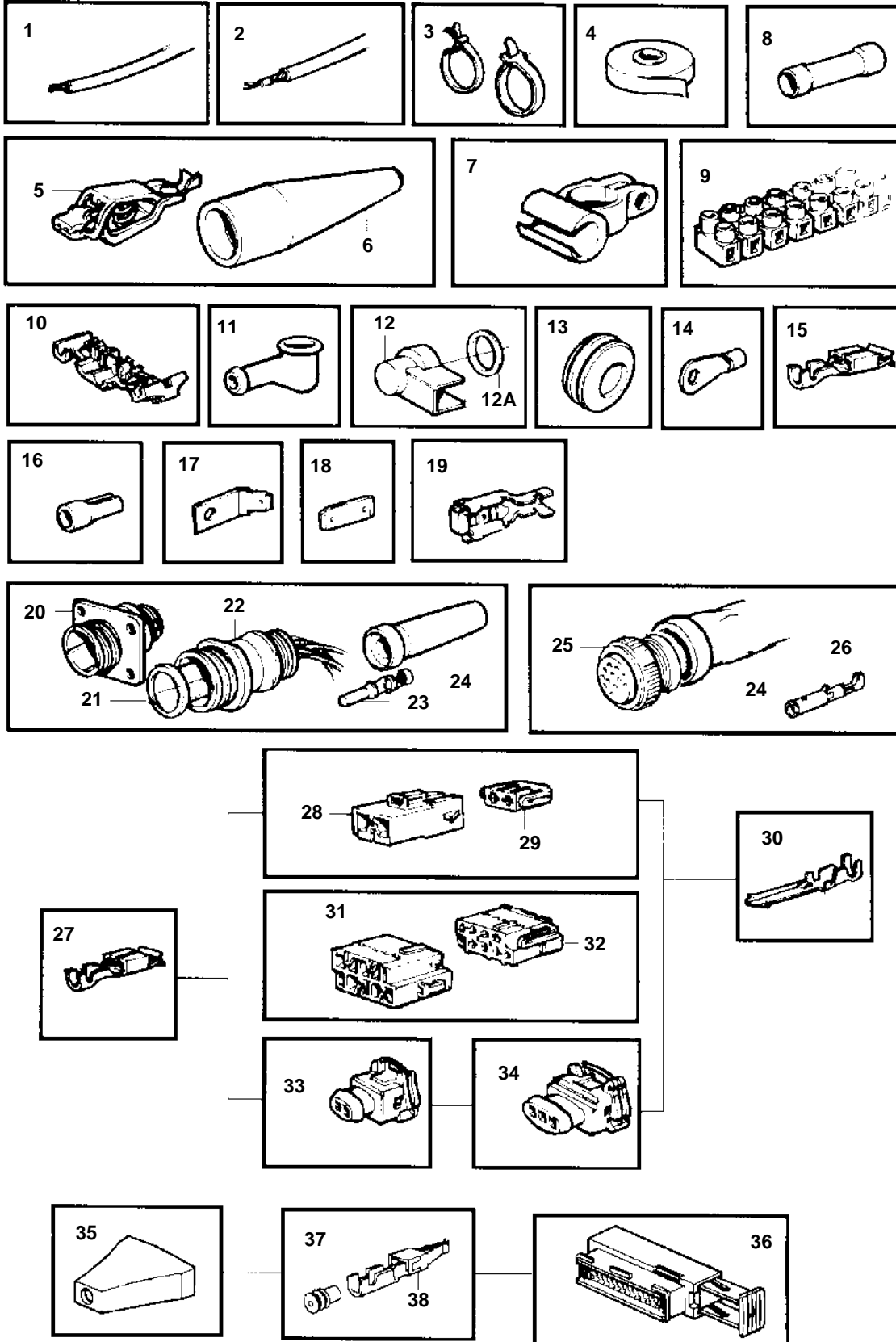


COMMON



COMMON

REF	PART NO.	DESCRIPTION	NOTES
1	954443	Cable, type RK	1,5sq.mm, BLACK
	954445	Cable, type RK	1,5sq.mm, RED
	970661	Cable, type R2	SO 1,5sq.mm, RED
	970663	Cable, type R2	SO 2,5sq.mm, BLACK
	970698	Cable, type R2	SO 2,5sq.mm, RED
	954461	Cable, type RK	4,0sq.mm, BLACK
	954467	Cable, type RK	6,0sq.mm, BLACK
	970711	Cable, type R2	6,0sq.mm, RED
	954485	Cable, type RK	16,0sq.mm, RED
	954500	Cable, type RK	25,0sq.mm, RED
	954502	Cable, type RK	35,0sq.mm, RED
2	862989	Cable	2x1,5sq.mm. Non reinforced ship cable approved by classification societies.
	863657	Cable	4,0sq.mm, RED. Reinforced ship cable approved by classification societies.
	842091	Cable	2x2,5sq.mm. Non reinforced ship cable approved by classification societies.
	842092	Cable	3x1,5sq.mm. Non reinforced ship cable approved by classification societies.
	862990	Cable	6,0sq.mm, BLACK. Non reinforced ship cable approved by classification societies.
		Cable	16,0sq.mm, RED. Non reinforced ship cable approved by classification societies.
	846273	Cable	25,0sq.mm, RED. Non reinforced ship cable approved by classification societies.
	844578	Cable	35,0sq.mm, RED. Non reinforced ship cable approved by classification societies.
	846639	Cable	2x1,5sq.mm. Non reinforced ship cable approved by classification societies.
	862991	Cable	2x1,5sq.mm. Non reinforced ship cable approved by classification societies.
	846346	Cable	2x2,5sq.mm. Replaced by cable harness 872679 and adapter 872939.
3	948211	Strip clamp	3x1,5sq.mm
	949666	Strip clamp, with mount. hole	3x4,0sq.mm
	949668	Strip clamp	3x6,0sq.mm
	862832	Strip clamp, steel	4x1,5sq.mm
4	858283	Electrical tape	4x2,5sq.mm
5	844280	Cable terminal, battery cable +pole	16x1,5sq.mm
6		Isolator	19x1,5sq.mm
		Isolator	RED
7	954505	Cable terminal, battery cable -pole	D=77mm L=280mm
	954506	Cable terminal, battery cable +pole	D=42mm L=170mm
8	956956	Splice	D=102mm L=362mm
	956958	Splice	1,5-2,5sq.mm, BLUE
	956960	Splice	L=61mm
9	926219	Coupling piece	BLACK
10	944306	Clamp	RED
11	829200	Protective cap	0,5-1,0sq.mm, RED
12	1234326	Protective cap	1,5-2,5sq.mm, BLUE
12A	960140	Washer	3-6sq.mm, YELLOW
13	941269	Cable grommet	MAX 20sq.mm, 12-POLE
	821053	Rubber bushing	I.D=35mm
	943920	Protecting plug	I.D=40mm
14	881492	Cable terminal	M4x1,1-2,5sq.mm
	881493	Cable terminal	M5x1,1-2,5sq.mm
	881508	Cable terminal	M6x1,1-2,5sq.mm
	881494	Cable terminal	M8x1,1-2,5sq.mm
	881504	Cable terminal	M10x1,1-2,5sq.mm
	881506	Cable terminal	M4x2,6-6,0sq.mm
	881495	Cable terminal	M5x2,6-6,0sq.mm
	881496	Cable terminal	M6x2,6-6,0sq.mm

COMMON

REF	PART NO.	DESCRIPTION	NOTES
14	881497	Cable terminal	M8x2,6-6,0sq.mm
	881498	Cable terminal	M10x2,6-6,0sq.mm
	940331	Cable terminal	M5x6,1-10,0sq.mm
	940332	Cable terminal	M6x6,1-10,0sq.mm
	940333	Cable terminal	M8x6,1-10,0sq.mm
		Cable terminal	M10x6,1-10,0sq.mm
	881512	Cable terminal	M5x10,1-16,0sq.mm
	940335	Cable terminal	M6x10,1-16,0sq.mm
	940336	Cable terminal	M8x10,1-16,0sq.mm
	940337	Cable terminal	M10x10,1-16,0sq.mm
	865758	Cable terminal	I.D=12,5 D=23mm
15	853015	Cable terminal	FOR 853866, YASAKI. For trim instrument.
16	942429	Cable terminal	FOR 853866, YASAKI
17	944485	Spade terminal	6,3xM5x180
18	839328	Spade terminal	16,3x6,3x0,8
19	881491	Cable terminal	6,3x0,75-2,1sq.mm
20	846611	Sleeve connector	16-POLE
21	846615	Sealing ring	
22	846647	Pin connector	16-POLE
23	849958	Cable terminal	1,6x0,5-1,5sq.mm
24	847005	Sealing collar	L=100mm D=20mm
25	846612	Sleeve connector	16-POLE
26	849959	Cable terminal	1,6x0,5-1,5sq.mm
27	970777	Cable terminal	2,8x2 NATURAL
28	968377	Housing	4,8/2,8x2 NATURAL
	968379	Housing	2,8x8 NATURAL
29	968376	Housing	3 PIPES
	968378	Housing	4,8/2,8x2 GREY
30	974313	Cable terminal	2,8x0,8x1,1-2,5sq.mm
31	968401	Housing	2,8x8 NATURAL
32	968400	Housing	4,8/2,8x8 NATURAL
33	967712	Housing	SO 3-POLE
34	967713	Housing	2-POLE
35	873632	Rubber guard	
36	9148263	Switch	42-POLE
37	970772	Seal	1,2-2,1sq.mm BLUE
	9148107	Seal	1,4-2,0 GREY
	970773	Seal	2,2-3sq.mm WHITE
38	9148135	Switch	1,6x0,5-1sq.mm
	970778	Cable terminal	4,8/2,8x0,5-1sq.mm
	970779	Cable terminal	4,8/2,8x1,1-2,5sq.mm