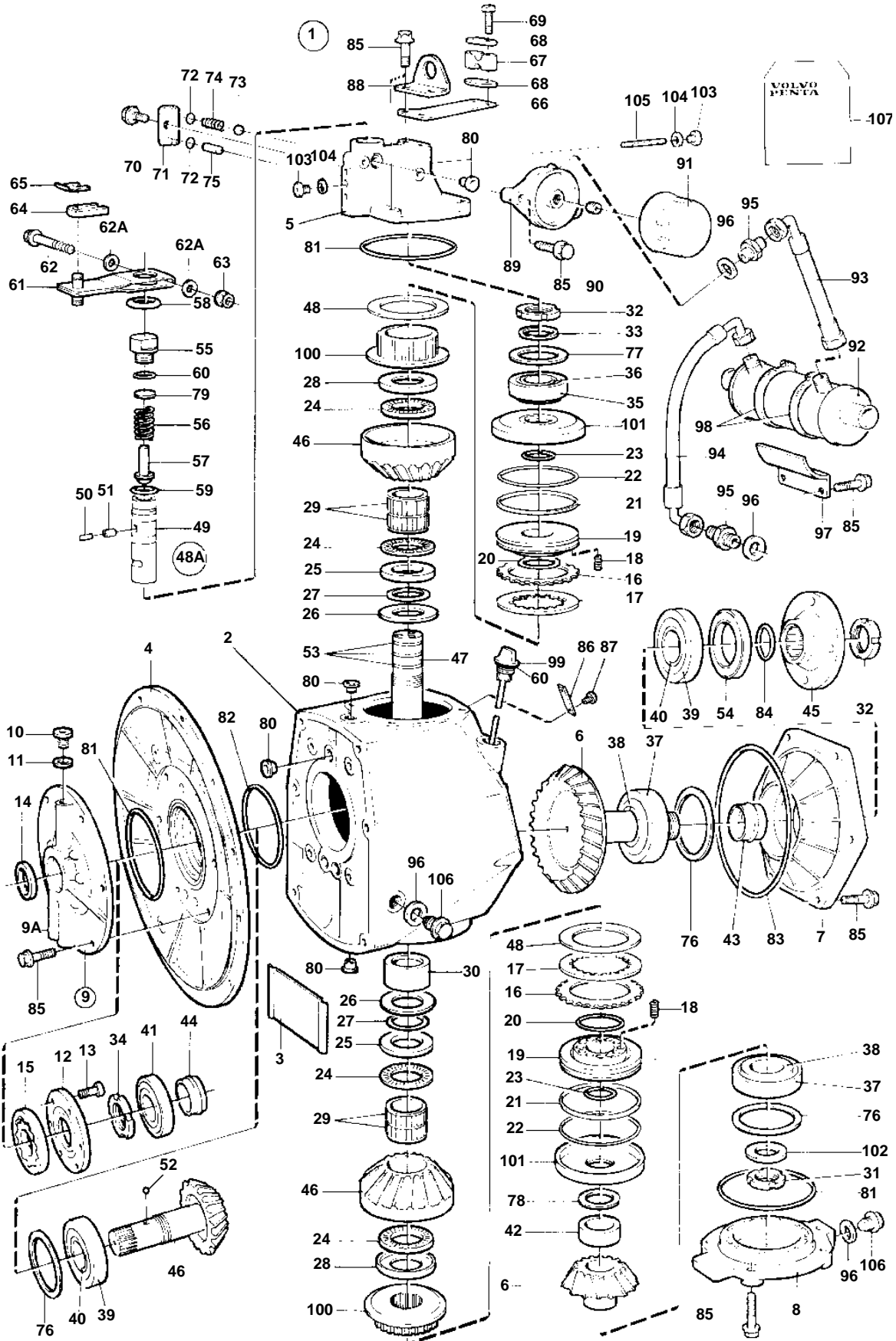


HS1A



15156

## HS1A

| REF | PART NO. | QTY | DESCRIPTION            | NOTES   |
|-----|----------|-----|------------------------|---|
| 1   | 873172   | 1   | Reversing gear         | RATIO 2.62:1  |
| 2   | 872500   | 1   | • Gear housing         |   |
| 3   | 872574   | 1   | • Shield               |   |
| 4   | 872501   | 1   | • Cover                |   |
| 5   | 872725   | 1   | • Valve housing        |   |
| 6   | 872534   | 1   | • Drive gear set       |   |
| 7   | 872505   | 1   | • Bearing housing      |   |
| 8   | 872506   | 1   | • Bearing housing      |   |
| 9   | 3851512  | 1   | • Oil pump             |   |
| 9A  |          | 1   | • • Oil pump housing   |   |
| 10  | 945065   | 3   | • • Plug               |   |
| 11  | 969011   | 3   | • • Gasket             |   |
| 12  |          | 1   | • • Cover              |   |
| 13  | 942001   | 6   | • • Screw              |   |
| 14  | 6842273  | 1   | • • Sealing ring       | Included in gasket kit.                               |
| 15  |          | 1   | • • Pump element       |   |
| 16  |          | 14  | • Disc                 | Included in disc kit.                                 |
| 17  |          | 16  | • Disc                 | Included in disc kit.                                 |
| 18  | 872580   | 26  | • Spring               |   |
| 19  | 872518   | 2   | • Piston               |   |
| 20  | 977891   | 2   | • O-ring               | Included in gasket kit.. Included in piston ring kit. |
| 21  |          | 2   | • Piston ring          | Included in piston ring kit.                          |
| 22  |          | 2   | • O-ring               | Included in piston ring kit.                          |
| 23  | 872522   | 2   | • Lock ring            |   |
| 24  | 184175   | 4   | • Needle bearing       |   |
| 25  | 184239   | 2   | • Washer               |   |
| 26  | 872581   | 2   | • Spring washer        |   |
| 27  | 956000   | 2   | • O-ring               | Included in gasket kit.                               |
| 28  | 872570   | 2   | • Thrust washer        |   |
| 29  | 184798   | 4   | • Needle bearing       |   |
| 30  | 872587   | 1   | • Roller bearing       |   |
| 31  | 969072   | 1   | • Round nut            | Included in gasket kit.                               |
| 32  | 969073   | 2   | • Round nut            | Included in gasket kit.                               |
| 33  | 872520   | 1   | • Washer               |   |
| 34  | 969074   | 1   | • Round nut            | Included in gasket kit.                               |
| 35  | 181304   | 1   | • Cup                  |   |
| 36  | 181303   | 1   | • Roller bearing       |   |
| 37  | 183403   | 2   | • Cup                  |   |
| 38  | 183649   | 2   | • Roller bearing       |   |
| 39  | 181036   | 2   | • Cup                  |   |
| 40  | 184797   | 2   | • Roller bearing       |   |
| 41  | 183232   | 1   | • Roller bearing       |   |
| 42  | 872521   | 1   | • Spacer sleeve        |   |
| 43  | 872568   | 1   | • Pretensioning sleeve |   |
| 44  | 872569   | 1   | • Pretensioning sleeve |   |
| 45  | 872523   | 1   | • Companion flange     |   |
| 46  | 872507   | 1   | • Drive gear set       |   |
| 47  | 872515   | 1   | • Shaft                |   |
| 48  |          | 2   | • Washer               | Included in disc kit.                                 |
| 48A | 872524   | 1   | • Valve                |   |
| 49  |          | 1   | • • Valve              |   |
| 50  |          | 1   | • • Sleeve             |   |
| 51  |          | 1   | • • Magnet             |   |
| 52  | 1521240  | 1   | • Ball                 |   |
| 53  |          | 3   | • Piston ring          | Included in piston ring kit.                          |
| 54  | 872701   | 1   | • Sealing ring         | Included in gasket kit.                               |
| 55  | 872525   | 1   | • Housing              |   |
| 56  | 872585   | 1   | • Spring               |   |
| 57  | 873519   | 1   | • Valve kit            |   |
| 58  | 872567   | 1   | • Cover                |   |
| 59  | 977890   | 1   | • O-ring               | Included in gasket kit.                               |

## HS1A

| REF | PART NO. | QTY | DESCRIPTION       | NOTES                   |
|-----|----------|-----|-------------------|-------------------------|
| 60  | 925058   | 2   | • O-ring          | Included in gasket kit. |
| 61  | 872526   | 1   | • Lever           |                         |
| 62  | 955252   | 1   | • Screw           |                         |
| 62A | 940090   | 2   | • Washer          |                         |
| 63  | 963104   | 1   | • Nut             |                         |
| 64  | 872075   | 1   | • Anchorage       |                         |
| 65  |          | 1   | • Retaining ring  |                         |
| 66  | 872528   | 1   | • Bracket         |                         |
| 67  | 872074   | 1   | • Retainer        |                         |
| 68  | 872076   | 2   | • Washer          |                         |
| 69  | 956083   | 2   | • Screw           |                         |
| 70  | 967949   | 1   | • Screw           | (965175)                |
| 71  | 872529   | 1   | • Cover           |                         |
| 72  | 955983   | 2   | • O-ring          | Included in gasket kit. |
| 73  | 183801   | 1   | • Ball            |                         |
| 74  | 872586   | 1   | • Spring          |                         |
| 75  | 184796   | 1   | • Needle bearing  |                         |
| 76  | 977913   | X   | • Shim            | TH = 0,10mm             |
|     | 977914   | X   | • Shim            | TH = 0.15mm             |
|     | 977915   | X   | • Shim            | TH=0.35mm               |
| 77  | 977910   | X   | • Shim            | TH = 0,10mm             |
|     | 977911   | X   | • Shim            | TH = 0.15mm             |
|     | 977912   | X   | • Shim            | TH=0.35mm               |
| 78  | 978912   | X   | • Shim            | TH = 0,30mm             |
|     |          | X   | • Shim            | TH=0.35mm               |
|     | 978913   | X   | • Shim            | TH=0,40mm               |
|     | 978914   | X   | • Shim            | TH = 0,45mm             |
|     | 978915   | X   | • Shim            | TH = 0,50mm             |
|     | 978916   | X   | • Shim            | TH = 0,55mm             |
| 79  | 978917   | X   | • Shim            | TH = 0,50mm             |
| 80  | 422413   | 11  | • Sealing ring    | Included in gasket kit. |
| 81  | 925263   | 3   | • O-ring          | Included in gasket kit. |
| 82  | 925260   | 1   | • O-ring          | Included in gasket kit. |
| 83  | 948866   | 1   | • O-ring          | Included in gasket kit. |
| 84  | 949659   | 1   | • O-ring          | Included in gasket kit. |
| 85  | 947760   | 28  | • Flange screw    |                         |
| 86  |          | 1   | • Sign            |                         |
| 87  | 950885   | 2   | • Rivet           |                         |
| 88  |          | 1   | • Lifting eye     |                         |
| 89  | 872605   | 1   | • Bracket         |                         |
| 90  | 840274   | 1   | • Nipple          |                         |
| 91  | 834337   | 1   | • Oil filter      |                         |
| 92  | 872626   | 1   | • Oil cooler      |                         |
| 93  | 872637   | 1   | • Hydraulic hose  |                         |
| 94  | 872638   | 1   | • Hydraulic hose  |                         |
| 95  | 192639   | 2   | • Nipple          |                         |
| 96  | 947624   | 4   | • Gasket          | Included in gasket kit. |
| 97  | 872615   | 1   | • Bracket         |                         |
| 98  | 961674   | 2   | • Clamp           |                         |
| 99  | 3858156  | 1   | • Dipstick        | (872538)                |
| 100 | 872608   | 2   | • Hub             |                         |
| 101 | 872611   | 2   | • Cylinder        |                         |
| 102 | 978906   | 1   | • Support washer  |                         |
| 103 | 977917   | 3   | • Plug            |                         |
| 104 | 947620   | 3   | • Gasket          | Included in gasket kit. |
| 105 | 872577   | 1   | • Oil pump screen |                         |
| 106 | 1381498  | 2   | • Plug            |                         |
| 107 | 876588   | 1   | Gasket kit        | SEE GROUP 99            |
|     | 876591   | 1   | Disc kit          | SEE GROUP 99            |
|     | 876589   | 1   | Piston ring kit   | SEE GROUP 99            |