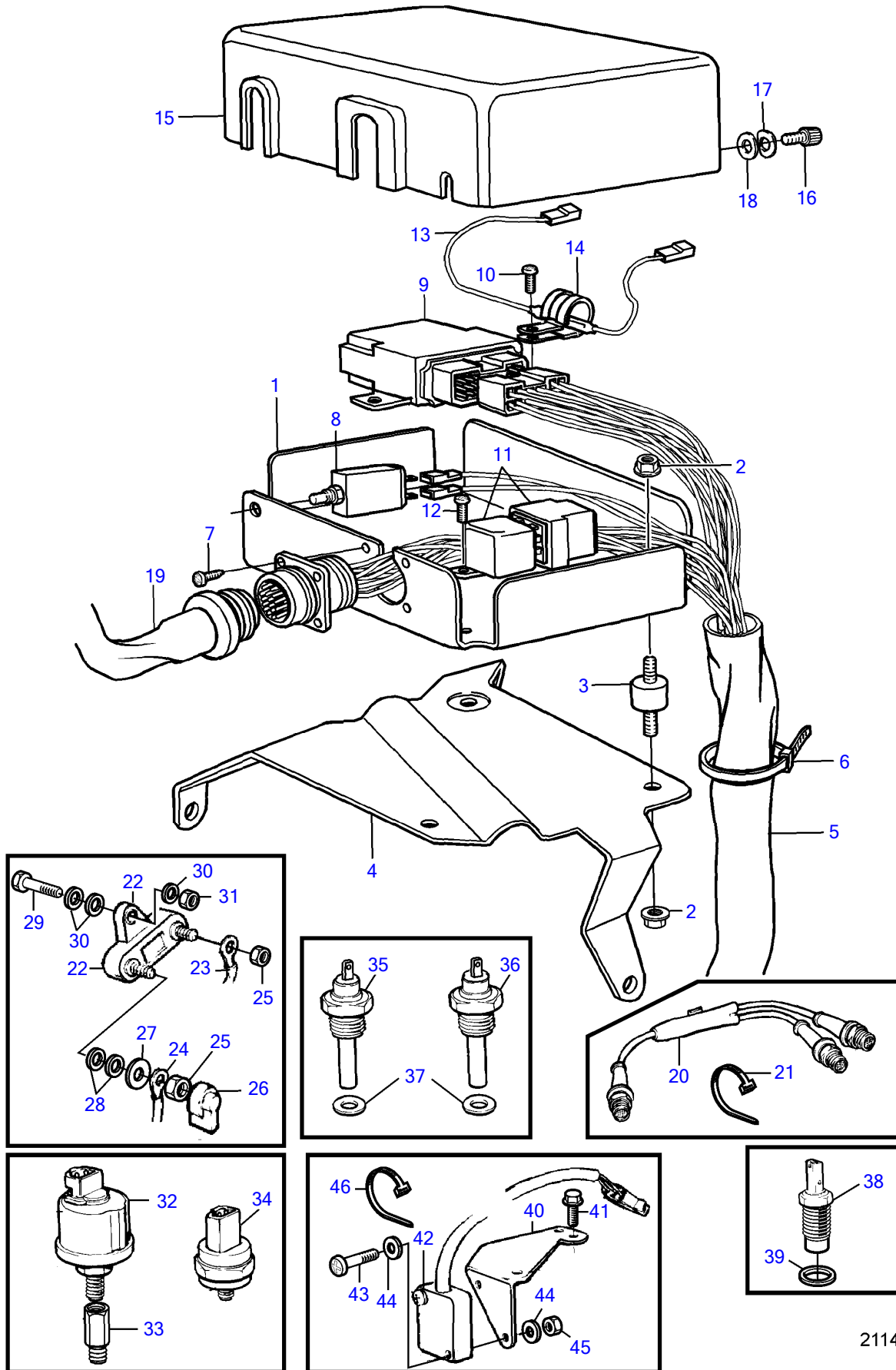


KAD32P-A



21146

KAD32P-A

REF	PART NO.	QTY	DESCRIPTION	SEE SEC.	NOTES
1	3581402	1	Bracket		
2	945407	6	Flange nut		
3	1348141	3	Absorber		
4	3581476	1	Bracket		
5	3581477	1	Wiring harness		
6	948211	2	Cable tie		
7	955119	4	Cross recessed screw		
8	966689	1	Fuse		
9	881797	1	Rotation speed relay		
10	968476	1	Flange screw		
11	873740	1	Relay		12V 40A
12	968476	2	Flange screw		
13	873828	1	Resistor		
14	952627	1	Clamp		
15	(860779)	1	Cover		Obsolete part
16	846736	3	Lock screw		
17	941904	3	Spring washer		
18	960137	3	Washer		
19	846648	X	Extension cable'verl		L=3.0m
	846649	X	Extension cable'verl		L=5.0m
	846650	X	Extension cable'verl		L=7.0m
20	1140598	1	Distributing contact		For double steering positions.
21	948211	3	• Cable tie		
22	3819905	1	Fuse		(856355)
23		1	Cable kit		Power trim
24		1	Cable kit		Power trim
					See group 44
25	955781	2	Hexagon nut		
26	(1234326)	1	Protecting casing		Obsolete part
27	960140	1	Washer		
28	955893	2	Washer		
29	947542	1	Flange screw		
30	955893	3	Washer		
31	945407	1	Flange nut		
32	866835	1	Sensor, oil-engine		0-10BAR
			• Bulletin P-38-6-1	P-38-6-1-EN	Vibration Damping Kit
32	866836	1	Sensor, oil-engine		For double steering positions., Alt,0-10bar
33	835980	1	Nipple		
34	863169	1	Pressure monitor, oil-pressure		0,7bar
35	873066	1	Thermo monitor, coolant water temp.		97°C
	827151	1	Temperature sensor, coolant water temp.		40-120°C
36	840074	1	Temperature sensor, coolant water temp.		For double steering positions., Alt, 120°C
37	11998	2	Gasket		
38	862251	1	Tachometer sensor		For revolution relay.
39	976931	1	Gasket		(957181)
40	860970	1	Bracket		
41	946544	2	Flange screw		
42	874498	1	Position sensor		(872597)
43	956050	2	Cross recessed screw		
44	955890	4	Washer		
45	966650	2	Lock nut		
46	948211	X	Cable tie		