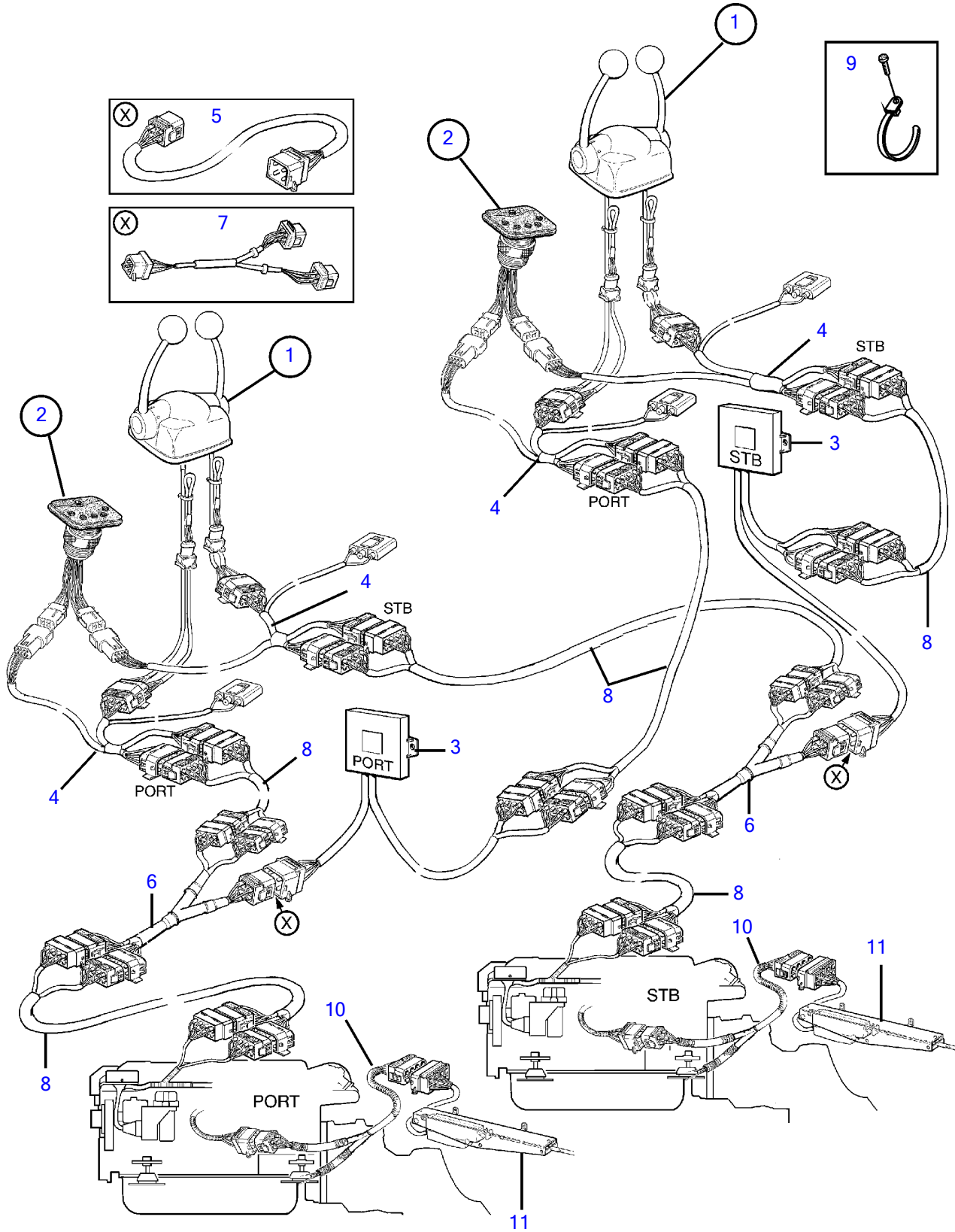


KAD44P-C, KAMD44P-C, , KAMD300-A



KAD44P-C, KAMD44P-C, , KAMD300-A

REF	PART NO.	QTY	DESCRIPTION	SEE SEC.	NOTES
1		X	Control		
			.	4995	
2		X	Control panel		
			.	4372	
3	874125	X	Electronic unit		For two or more stations.
4	874148	X	Cable kit		2ea for each steering positions.
5	874051	X	Adapter kit		4-pole, L=3.0m
	874052	X	Adapter kit		4-pole, L=5.0m
	874053	X	Adapter kit		4-pole, L=7.0m
	874054	X	Adapter kit		4-pole, L=9.0m
	874055	X	Extension cable\verl		4-pole, L=11.0m
6	873921	2	Wiring harness		For two or more stations.
7	873936	2	Branch cable		For three steering positions.
8	873916	X	Extension cable\verl		2x8-pole, L=3.0m
	873917	X	Extension cable\verl		2x8-pole, L=5.0m
	873918	X	Extension cable\verl		2x8-pole, L=7.0m
	873919	X	Extension cable\verl		2x8-pole, L=9.0m
	873920	X	Extension cable\verl		2x8-pole, L=11.0m
9	949666	X	Cable tie		
10		2	Cable kit	3455	For I/O
11		2	Actuator	3455	For I/O

7738870-27-5055B

18639

Upd:2012-02-13