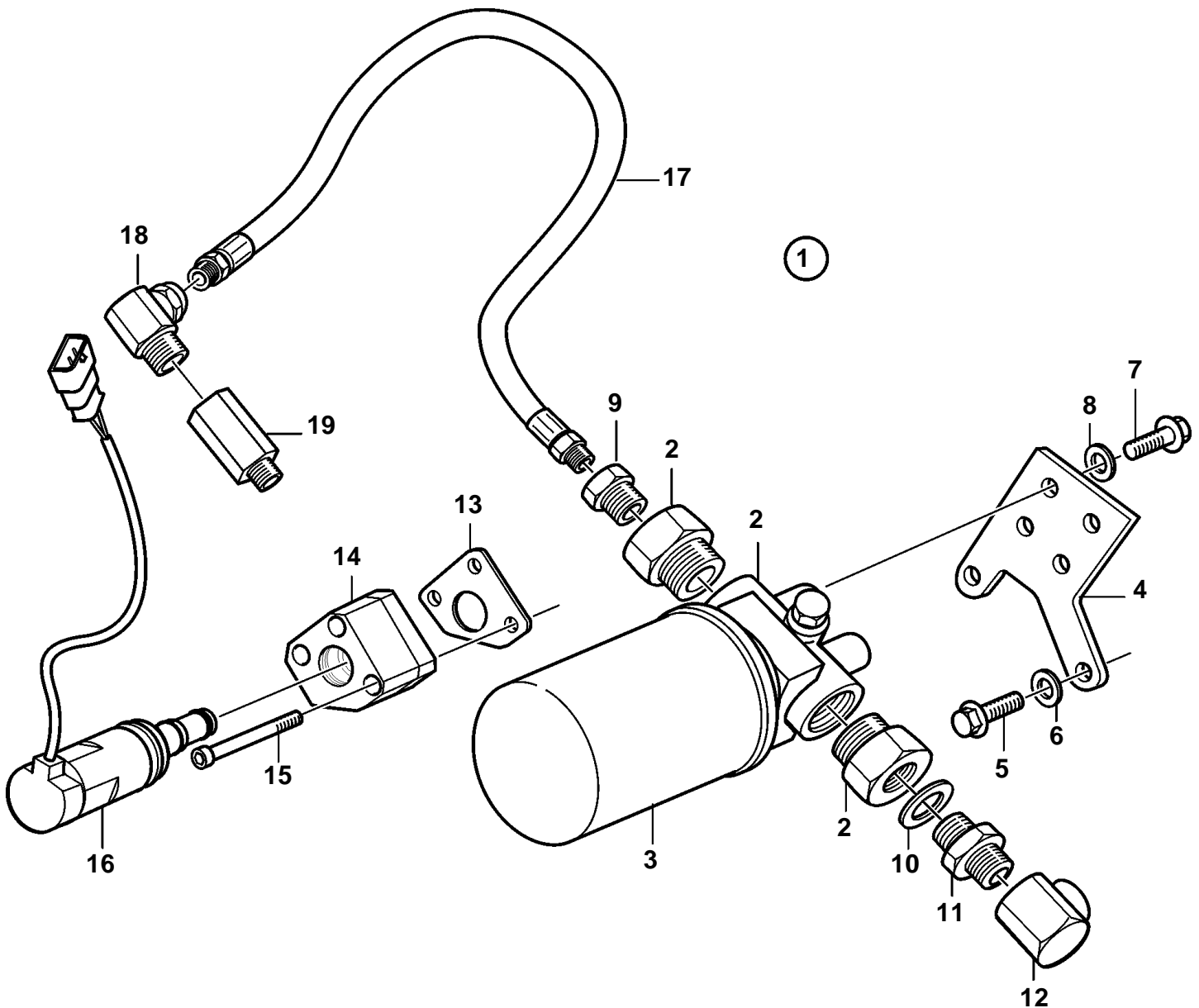


D9A2A D9-425, D9A2A D9-500 (R4), D9A2A D9-575, D9A2B 425, D9A2B D9-500 (R5), D9A2B D9-575



D9A2A D9-425, D9A2A D9-500 (R4), D9A2A D9-575, D9A2B 425, D9A2B D9-500 (R5), D9A2B D9-575

| REF | PART NO. | QTY | DESCRIPTION        | NOTES    |
|-----|----------|-----|--------------------|----------|
| 1   | 3848836  | 1   | Slip valve         | MG5065AE |
|     | 3593662  | 1   | Slip valve         | MG5075AE |
| 2   |          | 1   | · Reduction nipple |          |
| 3   |          | 1   | · Filter           |          |
| 4   |          | 1   | · Bracket          |          |
| 5   |          | 2   | · Screw            | M8x35mm  |
| 6   |          | 1   | · Washer           |          |
| 7   |          | 4   | · Screw            | M10x20mm |
| 8   |          | 4   | · Washer           |          |
| 9   |          | 1   | · Nipple           |          |
| 10  |          | 1   | · Gasket           |          |
| 11  |          | 1   | · Nipple           |          |
| 12  |          | 1   | · Elbow nipple     |          |
| 13  |          | 1   | · Gasket           |          |
| 14  |          | 1   | · Valve housing    |          |
| 15  |          | 3   | · · Screw          |          |
| 16  |          | 1   | · Valve peg        |          |
| 17  |          | 1   | · Hose             |          |
| 18  |          | 1   | · Elbow nipple     |          |
| 19  |          | 1   | · Nipple           |          |