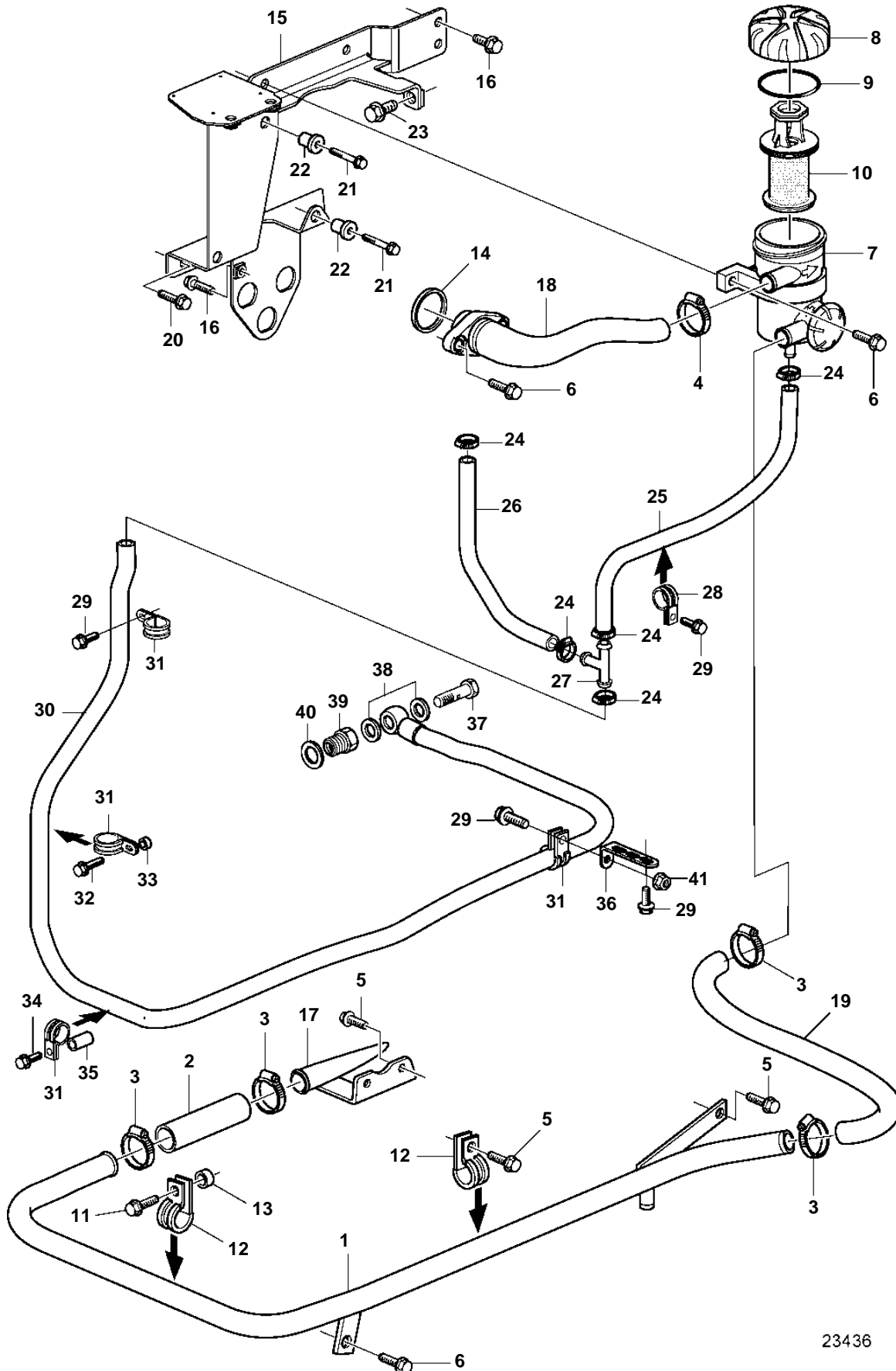


D9A2A D9A-MH, D9A2B MH



23436

D9A2A D9A-MH, D9A2B MH

REF	PART NO.	QTY	DESCRIPTION	NOTES
1	3812829	1	Crankcase ventilatio	
2	973972	X	Hose	L=100mm
3	943475	4	Hose clamp	
4	943474	1	Hose clamp	
5	946440	3	Flange screw	
6	945444	5	Flange screw	
7	3812235	1	Filter housing	
8		1	· Lock	
9	3584461	1	· · O-ring	
10	3584145	1	· Insert	
11	946329	1	Flange screw	
12	947827	1	Clamp	
13	977412	2	Spacer sleeve	
14	20555696	1	Sealing ring	(421629)
15	3817166	1	Bracket	
16	946173	3	Flange screw	
17	3589484	1	Pipe	
18	3839380	1	Pipe	
19	888573	1	Hose	
20	948336	2	Flange screw	
21	965176	3	Flange screw	
22	930760	3	Expanding nut	
23	946441	1	Flange screw	
24	943471	5	Hose clamp	
25	943707	X	Hose	L=440mm
26	943707	X	Hose	L=280mm
27	984445	1	T-nipple	
28	1545432	1	Clamp	
29	946440	5	Flange screw	
30	3840472	1	Hose	
31	949747	4	Clamp	
32	945444	1	Flange screw	
33	948871	1	Spacer washer	
34	973924	1	Flange screw	
35	848694	1	Spacer sleeve	
36	965561	1	Bracket	
37	941686	1	Hollow screw	
38	947622	2	Gasket	
39	3838214	1	Nipple	
40	18813	1	Gasket	
41	945408	1	Flange nut	