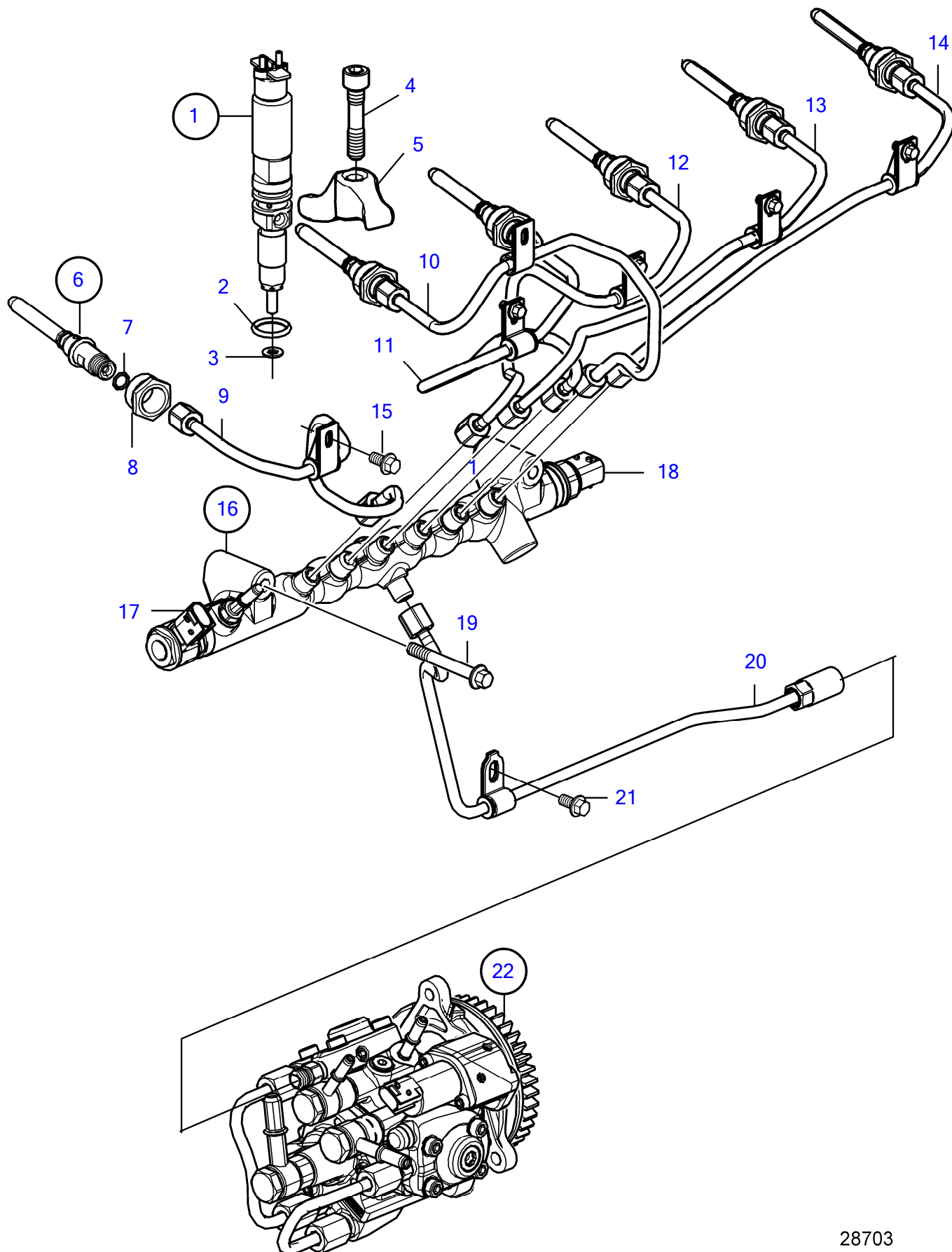


D8A1-A MP, D8A2-A MP



## D8A1-A MP, D8A2-A MP

REF	PART NO.	QTY	DESCRIPTION	NOTES
1	3801736	6	Injector, exch	Replaced by 3801854
	22625707	6	Injector	Replaced by 23185947
	3801854	6	Injector, exch	
	23185947	6	Injector	
2	993664	6	• O-ring	
3	21228824	6	• Gasket	
4	21453372	6	Hex. socket screw	
5	22556900	6	Yoke	
6	21843299	6	Sleeve tube	
7	21442526	6	• Rubber ring	
8	21859185	6	Insert sleeve	
9	22338627	1	Pipe	Injector 1
10	22711852	1	Pipe	Injector 2
11	22338629	1	Pipe	Injector 3
12	22338630	1	Pipe	Injector 4
13	22338631	1	Pipe	Injector 5
14	22338632	1	Pipe	Injector 6
15	20730825	6	Flange screw	
16	22807245	1	Common rail	
17	21880675	1	• Relief valve	
18	21880678	1	• Pressure sensor	
19	994387	2	Flange screw	
20	22338633	1	Pipe	
21	984734	1	Flange screw	
22	22208205	1	Fuel pump	