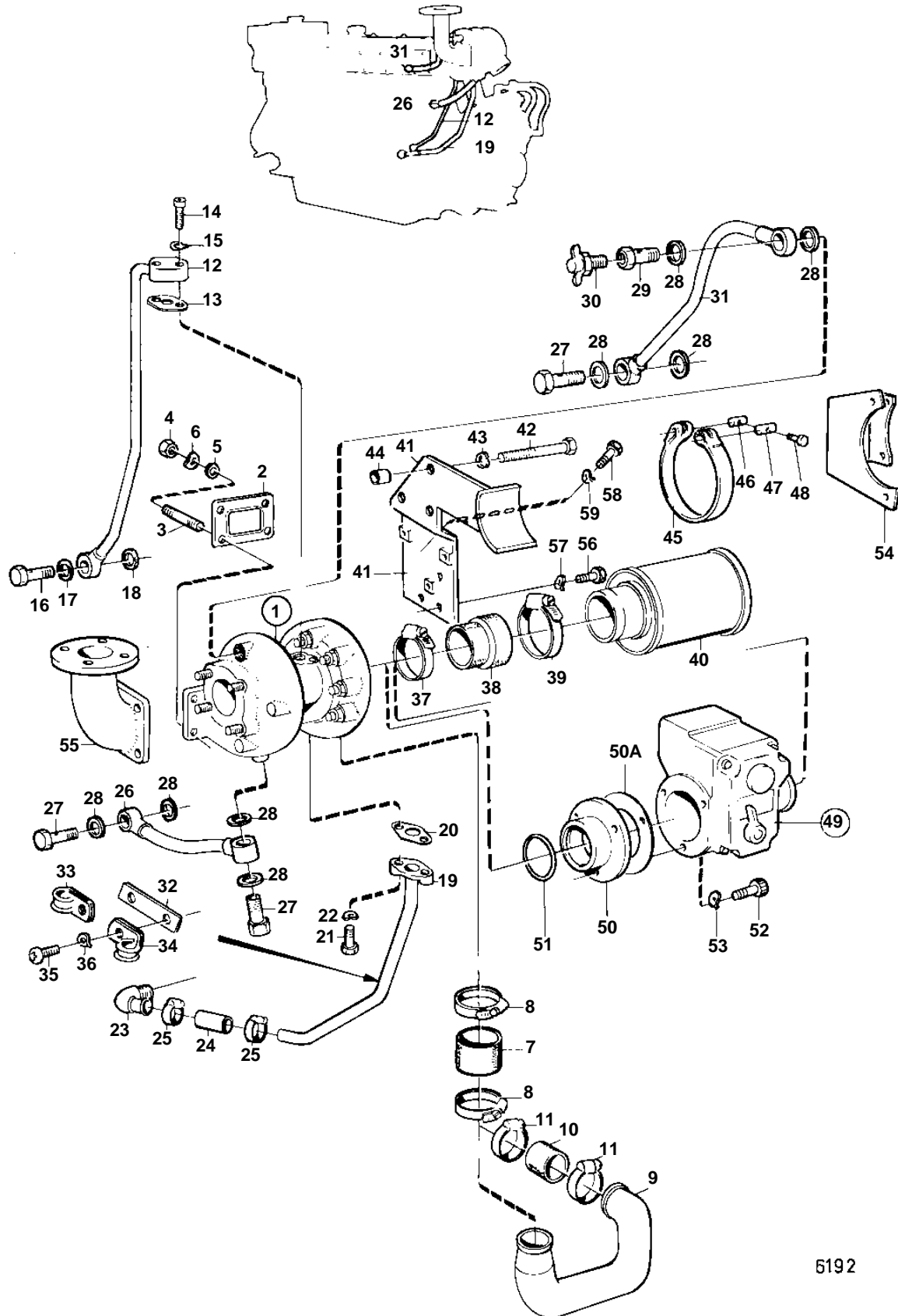


TD70CHC,TD70CRC



5192

TURBO COMPRESSOR AND AIR FILTER WITH INSTALLATION COMPONENTS

02B

TD70CHC,TD70CRC

REF	PART NO.	QTY	DESCRIPTION	SEE SEC.	NOTES
1	843663	1	Turbo		
	3802012	1	Turbocharger, exch		Exchange unit
				02B-0600	
	845677	1	Turbo		ALT CLASS
				02B-0600	
2	421324	1	Gasket		
3	924079	4	Stud		
4	940183	4	Nut		
5	955895	4	Washer		
6	942336	4	Spring washer		
7	466327	1	Hose		
8	943479	2	Hose clamp		
9	837875	1	Tube		
10	946264	1	Hose		
11	943481	2	Hose clamp		
12	837415	1	Tube		
13	420641	1	Gasket	IK	(420475)
14	955295	1	Screw		L = 20 MM
	940142	1	Screw		L = 30 MM
15	941907	2	Spring washer		
16	942007	1	Hollow screw		(954394)
17	957178	1	Gasket	IK	
18	957181	1	Gasket	IK	
19	843388	1	Tube		
20	842986	1	Gasket	IK	
21	955297	2	Screw		
22	941907	2	Spring washer		
23	468629	1	Elbow nipple		
24	466328	1	Rubber hose		
25	943473	2	Hose clamp		
26	843976	1	Hose		
27	191157	3	Hollow screw		
28	957185	8	Gasket	IK	
29	191158	1	Hollow screw		
30	82745	1	Tap		
31	843977	1	Tube		
32	836262	1	Bracket		
33	952625	1	Clamp		
34	952631	1	Clamp		
35	950044	2	Screw		
36	941906	2	Spring washer		
37	943481	1	Hose clamp		
	943483	1	Hose clamp		ENGINE WITHOUT EMERGENCY STOP.
38	842281	1	Hose		
	843409	1	Fitting		ENGINE WITHOUT EMERGENCY STOP.
39	943484	1	Hose clamp		
40	842280	1	Air filter		
41	845669	1	Bracket		
42	949886	3	Screw		(191337)
43	941907	3	Spring washer		
44	826652	3	Spacer sleeve		
45	821028	1	Tensioning band		
46	31405	1	Pin		
47	31404	1	Pin		
48	31406	1	Screw		
49		1	EMERGENCY STOP		SEE GROUP 3
50	845662	1	Ring		WHEN EMERGENCY STOP IS INSTALLED.
50A	862590	1	Gasket		(843718). WHEN EMERGENCY STOP IS INSTALLED.
51	925093	2	O-ring		WHEN EMERGENCY STOP IS INSTALLED.
52	959223	1	Screw		L = 30 MM. WHEN EMERGENCY STOP IS INSTALLED.
	959224	1	Screw		L = 35 MM. WHEN EMERGENCY STOP IS INSTALLED.
	959233	1	Screw		L = 80 MM. WHEN EMERGENCY STOP IS INSTALLED.
	940135	3	Screw		ENGINE WITHOUT EMERGENCY STOP.

7733810 - 02B - 02B-0550

6192

Upd: 22 NOV 2005

D70CHC, D70CRC, TD70CHC, TD70CRC

VOLVO
PENTA

TURBO COMPRESSOR AND AIR FILTER WITH INSTALLATION COMPONENTS

02B

TD70CHC,TD70CRC

REF	PART NO.	QTY	DESCRIPTION	SEE SEC.	NOTES
53	941907	3	Spring washer		WHEN EMERGENCY STOP IS INSTALLED.
54	845671	1	Bracket		WHEN EMERGENCY STOP IS INSTALLED.
55		1	EXHAUST BEND	02B-0700	
56	940135	3	Screw		
57	941907	3	Spring washer		
58	956091	1	Screw		
59	941906	1	Spring washer		