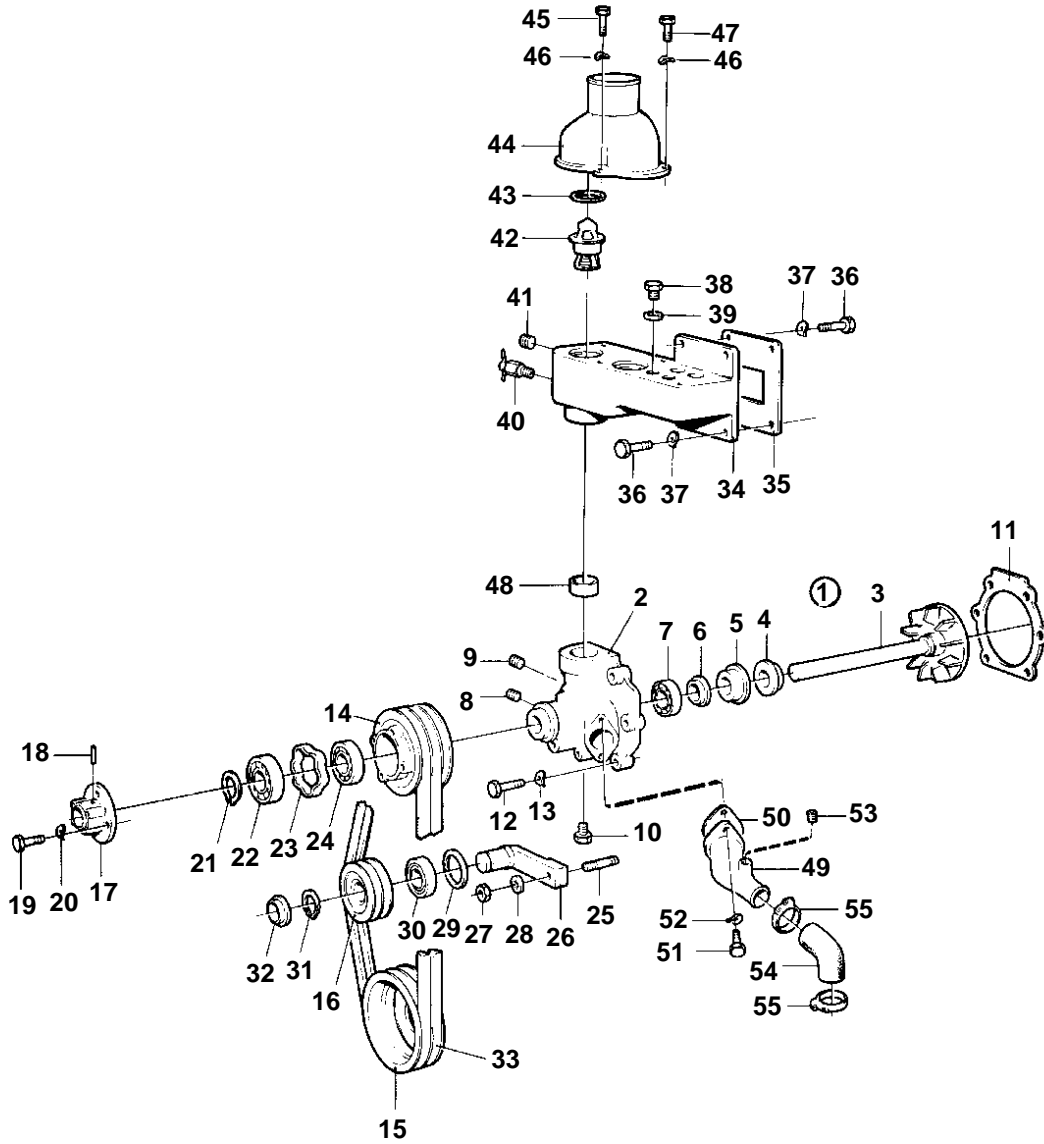


D70CRC,TD70CRC



5800

CIRCULATION PUMP AND THERMOSTAT WITH INSTALLATION COMPONENTS

02B

D70CRC,TD70CRC

REF	PART NO.	QTY	DESCRIPTION	SEE SEC.	NOTES
1	466833	1	Water pump		
	3803202	1	Circ. pump, exch		Exchange unit
2		1	· HOUSING		
3	421148	1	· Shaft	IK	
4	421306	1	· Wear ring	IK	
5	1545283	1	· Sealing ring	IK	
6	70913	1	· Deflector	IK	
7	1660609	1	· Ball bearing	IK	(181670)
8	968145	1	Plug		(952076)
9	952077	1	Plug		
10	192154	1	Plug		
11	421215	1	Gasket	IK	
12	940161	6	Screw		
13	941907	6	Spring washer		
14	820791	1	Pulley		
15	823595	1	Pulley, PULLEY		2-GROOVE SEE GROUP 2A
16	411670	1	Pulley		
17	420157	1	Hub		
18	951970	1	Pin	IK	
19	940135	4	Screw		
20	941907	4	Spring washer		
21	914462	1	Lock ring	IK	
22	11013	1	Ball bearing	IK	
23	422202	1	Spacer sleeve		
24	181538	1	Ball bearing	IK	
25	953351	1	Stud		
26	465473	1	Lever		
27	955828	1	Nut		
28	941911	1	Spring washer		
29	914533	1	Snap ring		
30	1544092	1	Ball bearing		
31	914462	1	Lock ring		
32	420416	1	Protecting plate		
33	966845	1	V-belt set		(947960)
34	824136	1	Thermostat housing		
35	862744	1	Gasket		(820604)
36	940134	4	Screw		
37	941909	4	Spring washer		
38	180761	2	Plug		
39	11996	2	Gasket		
40	82744	1	Tap		
41	952077	1	Plug		WHEN COOLANT SUPERVISION IS NOT INSTALLED
	844127	1	Nipple		SEE GROUP 3. WHEN COOLANT SUPERVISION IS INSTALLED
42	875788	2	Thermostat kit		70%Z9
	875787	2	Thermostat kit		76%Z9
43	416033	2	Sealing ring	IK	
44	420155	1	Tube		
45	940115	1	Screw		L = 25 MM
46	942336	3	Spring washer		
47	940162	2	Screw		
48	420162	1	Seal	IK	
49	820800	1	Tube		02B-0750
50	420171	1	Gasket	IK	02B-0750
51	956571	1	Screw		L = 32 MM
	956570	1	Screw		L = 25 MM
52	941907	2	Spring washer		
53	952077	1	Plug		
54	821128	1	Hose		02B-0750
55	943480	2	Clamp		02B-0750
	275607	1	Repair kit		

7733810 - 02B - 02B-0325

5800

Upd: 22 NOV 2005

D70CHC, D70CRC, TD70CHC, TD70CRC

VOLVO
PENTA