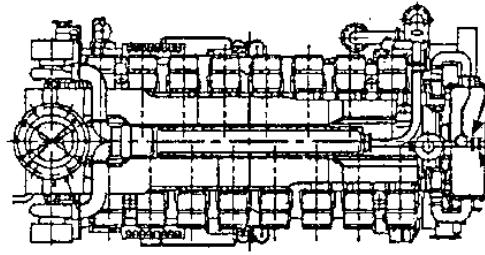


D65A-MT



1

CAUTION

PERFORM SAFETY MAINTENANCE
BEFORE RETURNING TO OPERATION AND
MAINTENANCE MANUAL.

45493 51800

2

CAUTION

HOT WATER MAY
CAUSE BURNS

DO NOT REFINISH COUPLER
OR PLUGS HOT COMPONENTS

45493 51810

4

CAUTION

HOT SURFACES
MAY CAUSE BURNS

DO NOT TOUCH HOT SURFACE

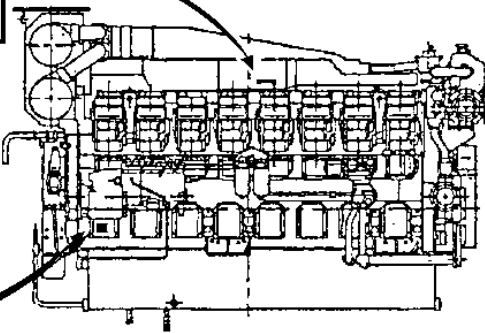
45493 51810

5

WARNING

TURNING
CAUSE SEVERE
PERSONAL INJURY

- BE SURE NO HANDS
AROUND MOVING PARTS
BEFORE TURNING.
- KEEP TURNING DIAL ON
OR BAR IN OFF POS-
ITION WHILE NOT IN USE.



3

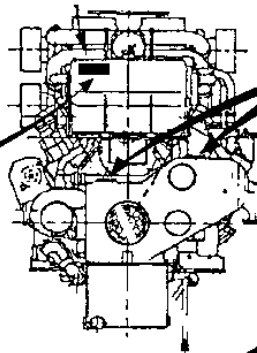
WARNING

BE CAREFUL OF ROTATING
BELT

DO NOT LET FINGERS NEAR
ROTATING BELT.

7

**VOLVO
PENTA**



4

CAUTION

HOT SURFACES
MAY CAUSE BURNS

DO NOT TOUCH HOT SURFACE

45493 51810

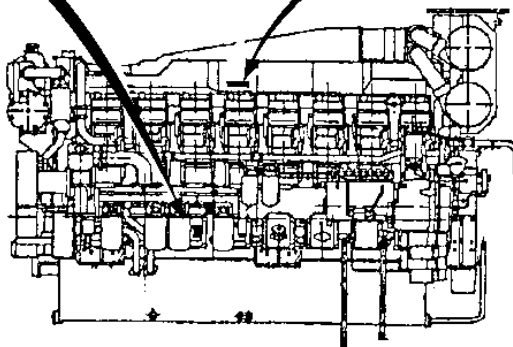
6

WARNING

OIL MIST IS
FLAMMABLE AND
EXPLOSIVE

DO NOT OPEN
INSPECTION COVER
WITHIN 10 MINUTES
AFTER ENGINE STOP

40421 10310



8

VOLVO PENTA

Spec No.

Serial No. 543650

Model D65A C/R

Rated power kW

Rated speed r/min

Manufactured by Volvo Penta Industries Ltd
Sagamihara, Japan for Volvo Penta

D65A-MT

REF	PART NO.	QTY	DESCRIPTION
1	3835087	1	Label
2	3835082	1	Label
3	3835083	2	Label
4	3835084	2	Label
5	3835085	1	Label
6	3835086	2	Label
7	3835176	1	Sign
8		1	Sign