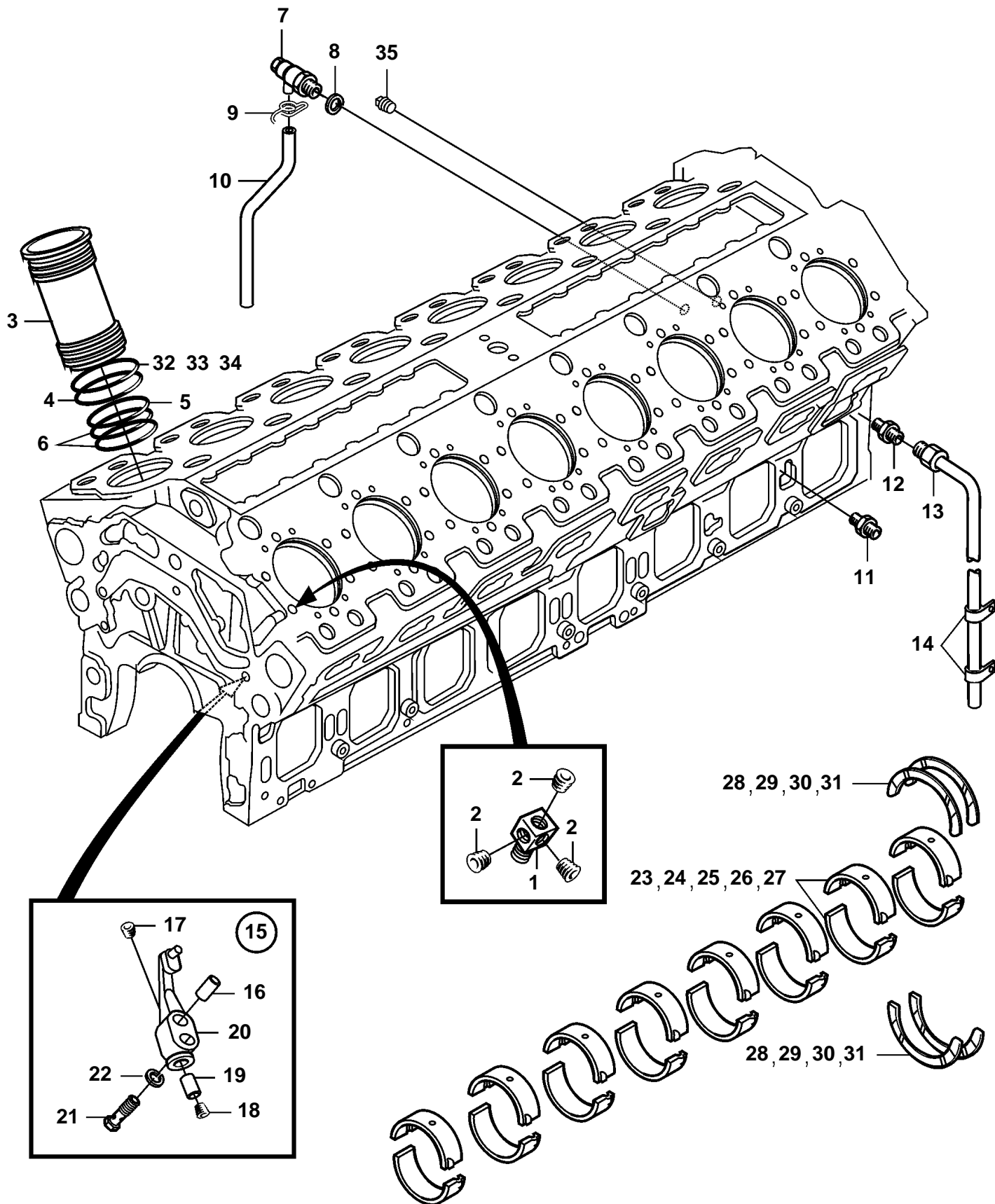


D65A-MS



D65A-MS

| REF | PART NO. | QTY | DESCRIPTION | NOTES |
|-----|----------|-----|-------------------|-------------|
| 1 | 3833268 | 1 | Connector | |
| 2 | 3836541 | 3 | Plug | |
| 3 | 3836555 | 16 | Cylinder liner | |
| 4 | 3831753 | 16 | O-ring | |
| 5 | 3831690 | 16 | O-ring | |
| 6 | 3831691 | 32 | O-ring | |
| 7 | 3831659 | 2 | Drain cock | |
| 8 | 3831596 | 2 | Sealing washer | |
| 9 | 3831614 | 2 | Clamp | |
| 10 | 3833628 | 2 | Hose | |
| 11 | 3832324 | 2 | Connector | |
| 12 | 3832320 | 2 | Connector | |
| 13 | 3834140 | 2 | Oil pipe | |
| 14 | 3833192 | 4 | Clip | |
| 15 | 3838134 | 16 | Nozzle | |
| 16 | 3836548 | 16 | · Pin | |
| 17 | 3835429 | 16 | · Set screw | |
| 18 | 3835430 | 16 | · Set screw | |
| 19 | 3834821 | 16 | · Valve | |
| 20 | | 16 | · Jet | |
| 21 | 3835428 | 16 | Hollow screw | |
| 22 | 3831683 | 16 | Spring washer | |
| 23 | 3835432 | 9 | Main bearing | STD |
| 24 | 3836347 | 9 | Main bearing | U.S=0,25mm |
| 25 | 3836348 | 9 | Main bearing | |
| 26 | 3836349 | 9 | Main bearing | |
| 27 | 3836350 | 9 | Main bearing | |
| 28 | 3834252 | 4 | Pressure plate | STD |
| 29 | 3834253 | 4 | Thrust washer kit | O.S=0,25mm |
| 30 | 3834254 | 4 | Thrust washer kit | O.S=0,50mm |
| 31 | 3834255 | 4 | Pressure plate | O.S=0,75mm |
| 32 | 3836290 | X | O-ring | TH=0,05mm |
| 33 | 3835426 | X | O-ring | TH = 0,10mm |
| 34 | 3836291 | X | O-ring | TH = 0.15mm |
| 35 | 3836541 | 1 | Plug | |