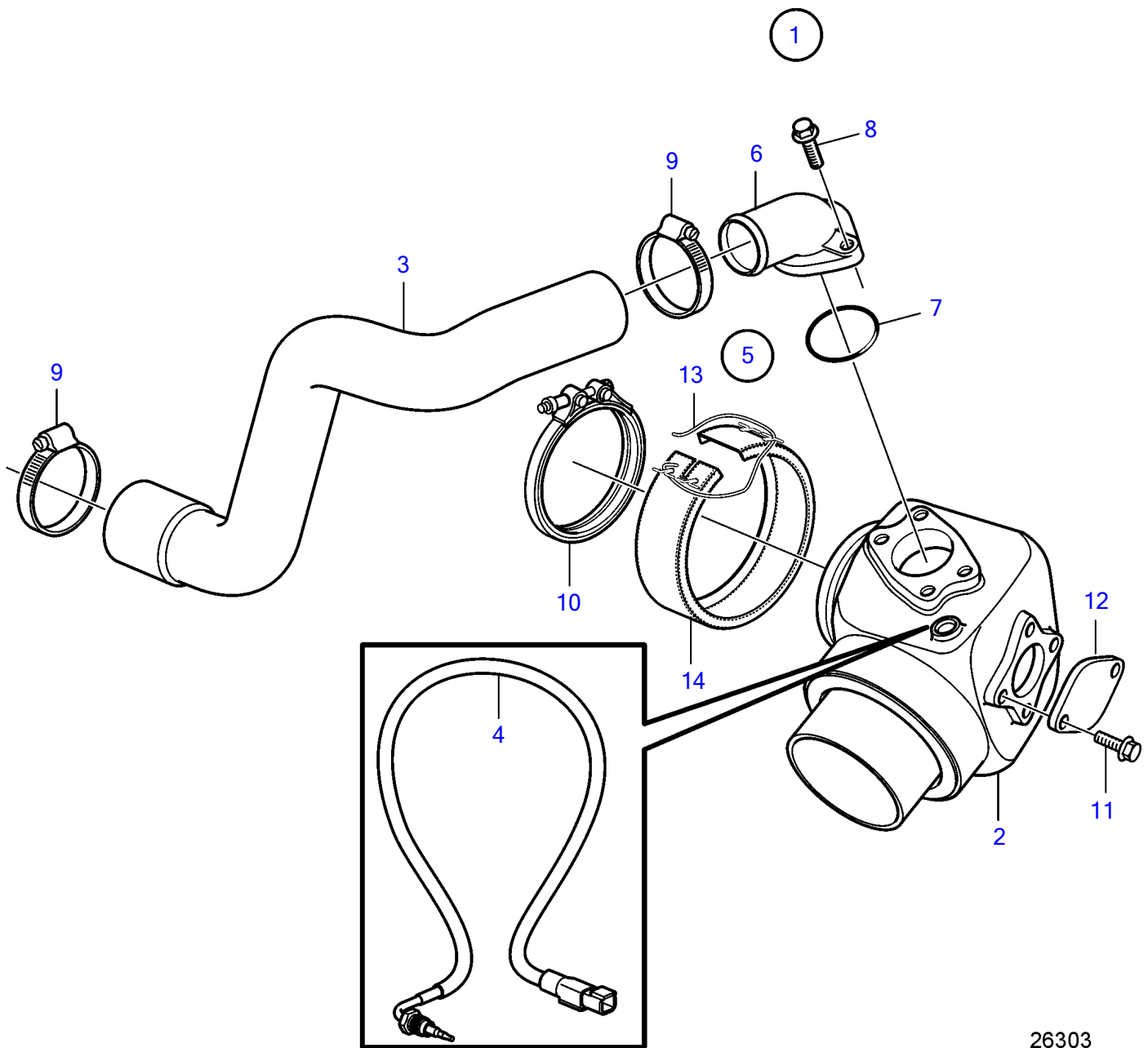


D6-300D-F (MC), D6-330D-F, D6-370D-F, D6-435D-F



26303

D6-300D-F (MC), D6-330D-F, D6-370D-F, D6-435D-F

REF	PART NO.	QTY	DESCRIPTION	SEE SEC.	NOTES
1		1	Exhaust pipe kit		
2	21684825	1	• Exhaust riser		
3	3809100	1	• Hose		
4	21673187	1	• Temperature sensor		
			• Installation Instruction 47703789	47703789-EN	Sensor
5		1	• Kit		
6	21450768	1	• • Connector		
7	969415	1	• • O-ring		
8	948356	2	• • Flange screw		
9	961672	2	• • Hose clamp		
10	21325767	1	• • V-band clamp		
11	946934	2	• • Flange screw		
12	3584006	1	• • Cover		
13	941710	X	• • Locking wire		L=400mm
14	3817196	1	• Isolation		