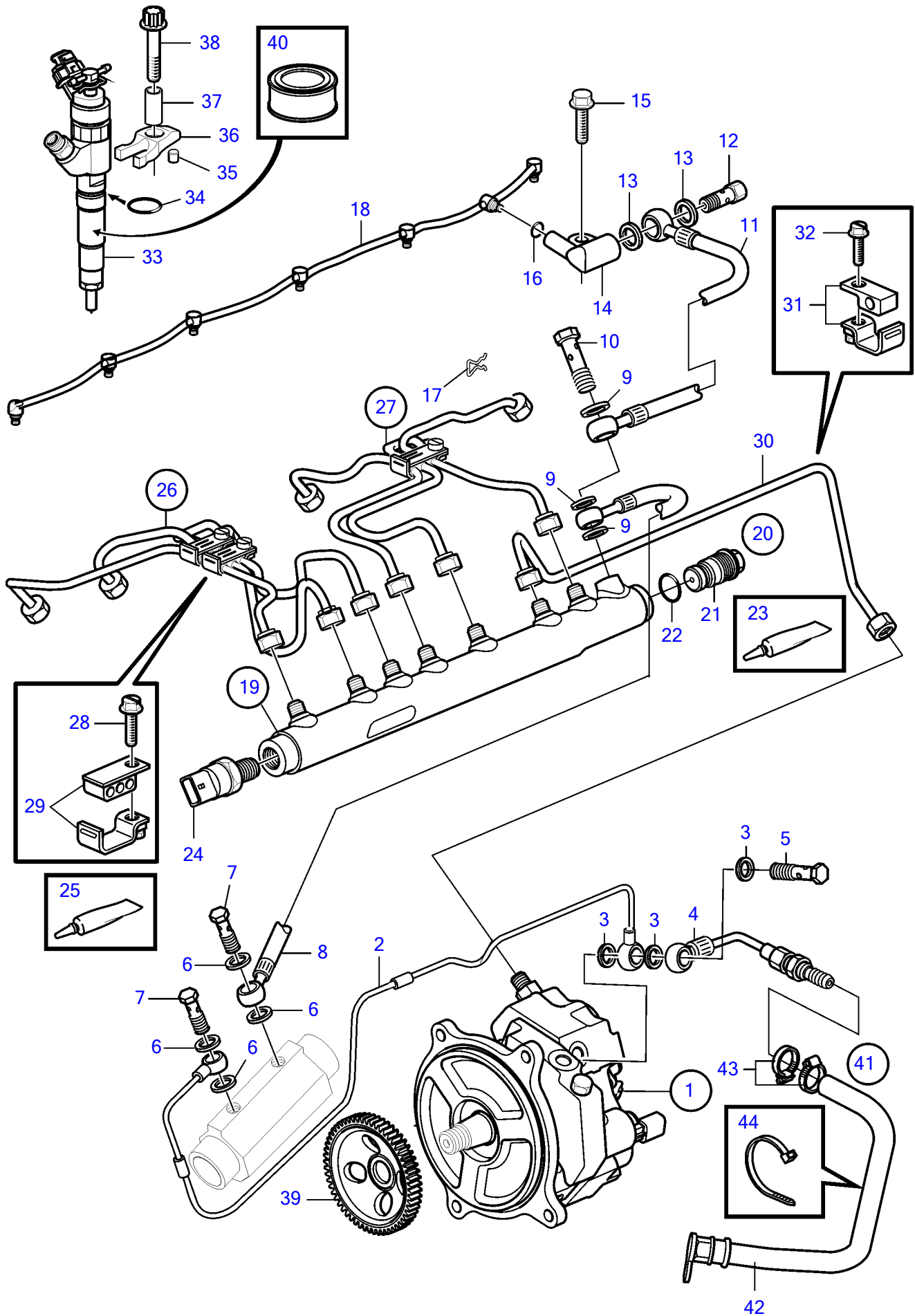


D6-300A-F, D6-300I-F, D6-330A-F, D6-330D-F, D6-330I-F, D6-370A-F, D6-370D-F, D6-370I-F



D6-300A-F, D6-300I-F, D6-330A-F, D6-330D-F, D6-330I-F, D6-370A-F, D6-370D-F, D6-370I-F

REF	PART NO.	QTY	DESCRIPTION	SEE SEC.	NOTES
1	889635	1	High-pressure pump		
			•	37238	
	3803633	1	High-pressure pump,, exch		
			•	37238	
2	3583893	1	Fuel hose		
3	11994	3	Gasket		
4	21822234	1	Return connection		
5	947975	1	Hollow screw		
6	20852763	4	Sealing ring		
7	969299	2	Hollow screw		
8	3584368	1	Fuel hose		
9	11994	3	Gasket		
10	947975	1	Hollow screw		
11	3584366	1	Fuel hose		
12	3584427	1	Pressure retaining v		
13	969011	2	Gasket		
14	3583123	1	Valve housing		
15	946173	1	Flange screw		
16	3589700	7	O-ring		
17	3583122	1	Lock spring		
18	3582803	1	Leak-off line		
19	3885742	1	Rail		
20	3884353	1	• Pressure limiting va		
21		1	• • Pressure limiting va		
22	3588336	1	• • • O-ring		
23	828250	1	• • • Lubricating grease		
			• Bulletin P-18-4-6	P-18-4-6-EN	Water resistant grease for grease gun
24		1	• Cable		
25	828250	1	• • Lubricating grease		
			• Bulletin P-18-4-6	P-18-4-6-EN	Water resistant grease for grease gun
26	3812506	1	Delivery pipe kit		
27	3588027	1	Delivery pipe kit		
28	3586005	2	Screw		
29	3586007	2	Clamp		
30	3582796	1	Delivery pipe		
31	3588018	2	Clamp		
32	946544	2	Flange screw		
33	3801295	6	Injector		
34	3583078	6	O-ring		
35	3583442	6	Support		
36	3582669	6	Clamp		
37	889789	6	Sleeve		
38	3586690	6	Six point screw		
39	889749	1	Gear		
40	3588346	X	Lubricant		500G
41	21967719	1	Hose		
42	21945682	1	• Hose		
43	961664	2	• Hose clamp		
44	980464	1	• Cable tie		