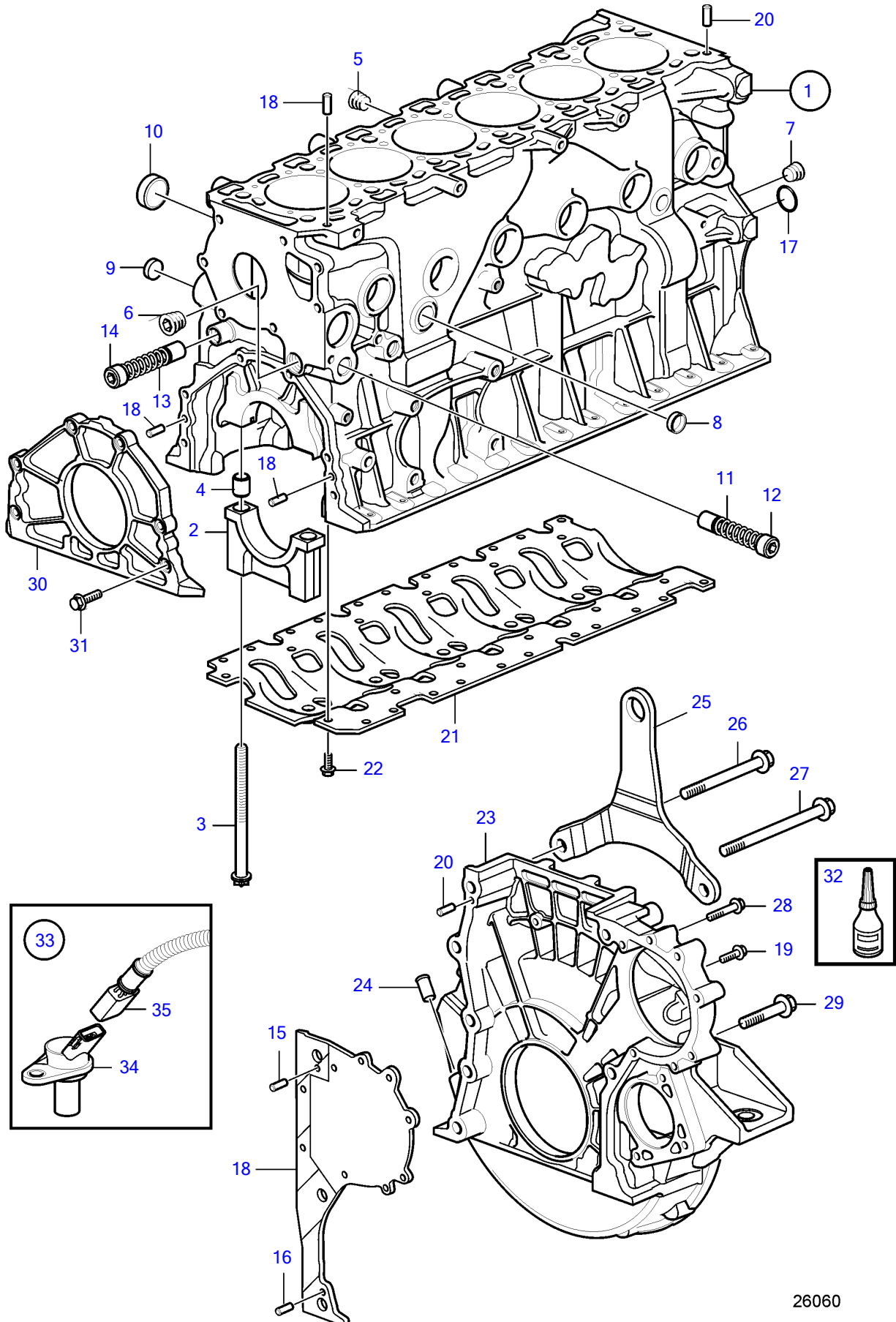


D6-280A-A, D6-280A-B, D6-280A-C, D6-280A-D, D6-280I-A, D6-280I-B, D6-280I-C, D6-280I-D, D6-310I-A, D6-310I-A-A, D6-310A-B, D6-310A-C, D6-310A-D, D6-310D-B, D6-310D-C, D6-310D-D, D6-310I-B, D6-310I-C, D6-310I-D, D6-330A-B, D6-330A-C, D6-330A-D, D6-330D-B, D6-330D-C, D6-330D-D, D6-330I-B, D6-330I-C, D6-330I-D, D6-350A-A, D6-350A-B, D6-370A-B, D6-370A-C, D6-370A-D, D6-370D-B, D6-370D-C, D6-370D-D, D6-370I-A, D6-370I-B, D6-370I-C, D6-370I-D, D6-400A-E, D6-435D-A, D6-435D-D, D6-435D-C, D6-435I-A, D6-435I-C, D6-435I-D



26060

D6-280A-A, D6-280A-B, D6-280A-C, D6-280A-D, D6-280I-A, D6-280I-B, D6-280I-C, D6-280I-D, D6-310I-A, D6-310A-A, D6-310A-B, D6-310A-C, D6-310A-D, D6-310D-B, D6-310D-C, D6-310D-D, D6-310I-B, D6-310I-C, D6-310I-D, D6-330A-B, D6-330A-C, D6-330A-D, D6-330D-B, D6-330D-C, D6-330D-D, D6-330I-B, D6-330I-C, D6-330I-D, D6-350A-A, D6-350A-B, D6-370A-B, D6-370A-C, D6-370A-D, D6-370D-B, D6-370D-C, D6-370D-D, D6-370I-A, D6-370I-B, D6-370I-C, D6-370I-D, D6-400A-E, D6-435D-A, D6-435D-D, D6-435D-C, D6-435I-A, D6-435I-C, D6-435I-D

REF	PART NO.	QTY	DESCRIPTION	NOTES
1	(3848922)	1	Cylinder block	Obsolete part
2		7	• Main bearing cap	
3	3581876	14	• Six point screw	
4	3584214	14	• Guide sleeve	
5	968061	1	• Plug	
6	968063	2	• Plug	
7	979947	2	• Plug	
8	3583447	2	• Expansion plug	
9	24426721	6	• Expansion plug	(8131706)
10	8131707	13	• Cap plug	
11	3583079	1	• Piston cooling valve	SN-2006031999
12	982121	1	• Plug	SN-2006031999
13	3583079	1	• Piston cooling valve	SN2006032000-
	3583079	1	• Piston cooling valve	D6-435, SN-2006033257
14	982121	1	• Plug	SN2006032000-
	982121	1	• Plug	D6-435, SN-2006033257
15	950562	1	Pin	
16	950566	1	Pin	
17	3843507	1	O-ring	
18	3582847	1	Plate	
19	946173	2	Flange screw	
20	950564	5	Pin	
21	3593991	1	Frame reinforcement	
22	985374	34	Flange screw	
23	3847475	1	Flywheel housing	SN-2006022154, Replaced by 1pc flywheel housing 40005734 and 1pc tachometer sender kit 21109100.
	40005734	1	Flywheel housing	SN2006022155-
24	3583622	1	Hose connection	
25		1	Lifting eye	
26	966371	1	Flange screw	
27	966368	2	Flange screw	
28	973924	3	Flange screw	
29	966364	5	Flange screw	
30	3582750	1	Cardboard tube	
31	946671	6	Flange screw	
32	888661	X	Adhesive	
33	21109100	1	Sensor kit	SN-2006022154, Replaced by 1pc flywheel housing 40005734 and 1pc tachometer sender kit 21109100.
34	20513343	1	• Sensor	
35	21138237	1	• Wiring harness	