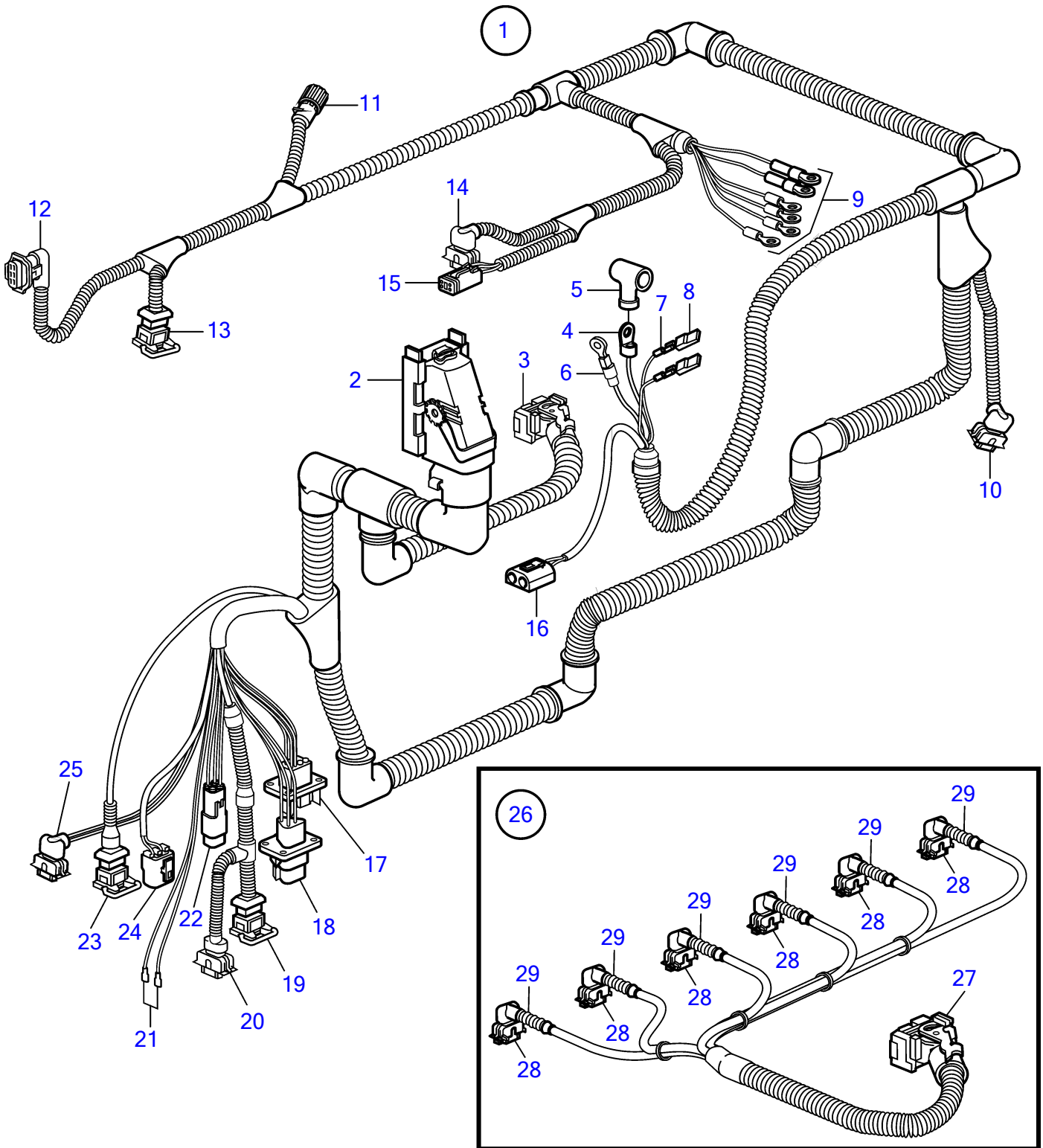


D6-350A-A, D6-350A-B, D6-370A-B, D6-370D-B, D6-435D-A, D6-435I-A



24688

D6-350A-A, D6-350A-B, D6-370A-B, D6-370D-B, D6-435D-A, D6-435I-A

REF	PART NO.	QTY	DESCRIPTION	NOTES
1	21138341	1	Wiring harness	
2	874567	1	• Cover, 89-pole	EDC-unit
3	874568	1	• Cover, 36-pole	EDC-unit
4	976478	1	• Cable terminal	
5	842150	1	• Protective cap	
6	976477	1	• Cable terminal	
7	973121	2	• Cable terminal	
8	949597	2	• Housing	
9	978969	1	• Cable terminal	
	970790	1	• Cable terminal	
	940336	1	• Cable terminal	
	978966	1	• Cable terminal	
	978970	1	• Cable terminal	
	940337	1	• Cable terminal	
10	874368	1	• Receptacle housing	
11	8159018	1	• Adapter	
12	874456	1	• Receptacle housing, pressure/temp	4-pole
13	977929	1	• Housing, WIF	3-pole
14	874368	1	• Receptacle housing, fuel pump	
15	874957	1	• Housing	4-pole
16	1307048	1	• Housing	
17	874432	1	• Tab housing	VPEP
18	874654	1	• Housing, oil level	
19	874432	1	• Tab housing, temperature	Fuel
20	874455	1	• Receptacle housing, pressure	3-pole
21		1	• Stop connector	
22	874802	1	• Housing	
23	976256	1	• Housing, temperature	2-pole
24	970753	1	• Housing	2-pole
25	874368	1	• Receptacle housing	4-pole
26	3809879	1	Wiring harness	
27	874566	1	• Coupling piece	16-pole
28	874368	6	• Receptacle housing	2-pole
29	3809871	6	• Rubber cap	