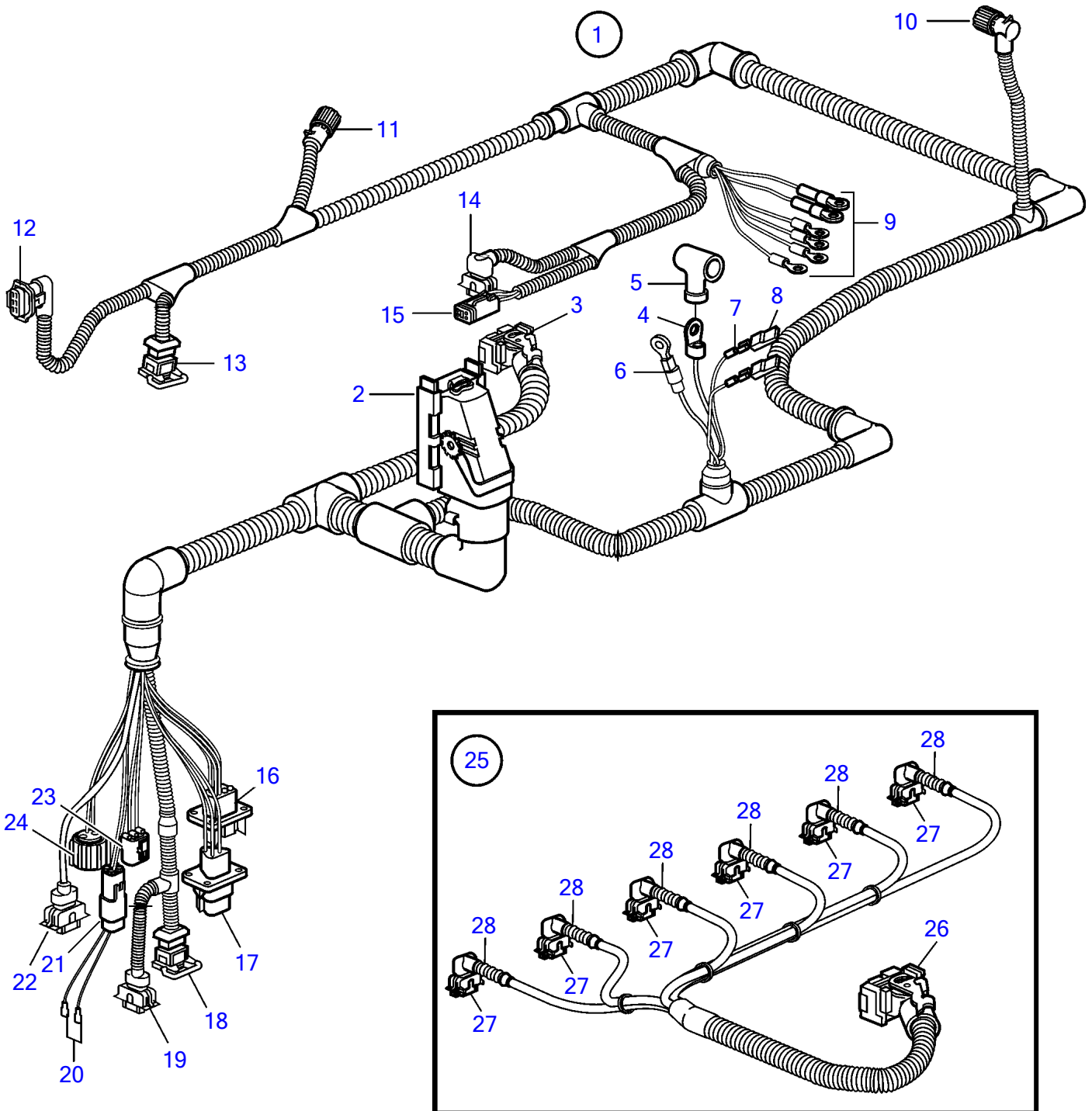


D6-280A-A, D6-280A-B, D6-280I-A, D6-280I-B, D6-310I-A, D6-310A-A, D6-310A-B, D6-310D-B, D6-310I-B, D6-330A-B, D6-330D-B, D6-330I-B, D6-370I-A, D6-370I-B



21626

D6-280A-A, D6-280A-B, D6-280I-A, D6-280I-B, D6-310I-A, D6-310A-A, D6-310A-B, D6-310D-B, D6-310I-B, D6-330A-B, D6-330D-B, D6-330I-B, D6-370I-A, D6-370I-B

REF	PART NO.	QTY	DESCRIPTION	NOTES
1	889424	1	Wiring harness	SN-2006006633
	3840343	1	Wiring harness	SN2006006634-, Replaced by 3883808
	3883808	1	Wiring harness	
2	874567	1	▪ Cover, 89-pole	EDC-unit
3	874568	1	▪ Cover, 36-pole	EDC-unit
4	976478	1	▪ Cable terminal	
5	842150	1	▪ Protective cap	
6	976477	1	▪ Cable terminal	
7	973121	2	▪ Cable terminal	
8	949597	2	▪ Housing	
9	978969	1	▪ Cable terminal	
	970790	1	▪ Cable terminal	
	940336	1	▪ Cable terminal	
	978966	1	▪ Cable terminal	
	978970	1	▪ Cable terminal	
	940337	1	▪ Cable terminal	
10	8159013	1	▪ Housing	
11	8159018	1	▪ Adapter	
12	874456	1	▪ Receptacle housing, pressure/temp	4-pole
13	977929	1	▪ Housing, WIF	3-pole
14	874368	1	▪ Receptacle housing, fuel pump	
15	874957	1	▪ Housing	4-pole
16	874432	1	▪ Tab housing	VPEP
17	874654	1	▪ Housing, oil level	
18	874432	1	▪ Tab housing, temperature	Fuel
19	874455	1	▪ Receptacle housing, pressure	3-pole
20		1	▪ Stop connector	
21	874802	1	▪ Housing	
22	976256	1	▪ Housing, temperature	2-pole
23	970753	6	▪ Housing, temperature	2-pole
24	8159013	1	▪ Housing	4-pole
25	3809877	1	Wiring harness	
26	874566	1	▪ Coupling piece	16-pole
27	874368	6	▪ Receptacle housing	2-pole
28	3809871	6	▪ Rubber cap	