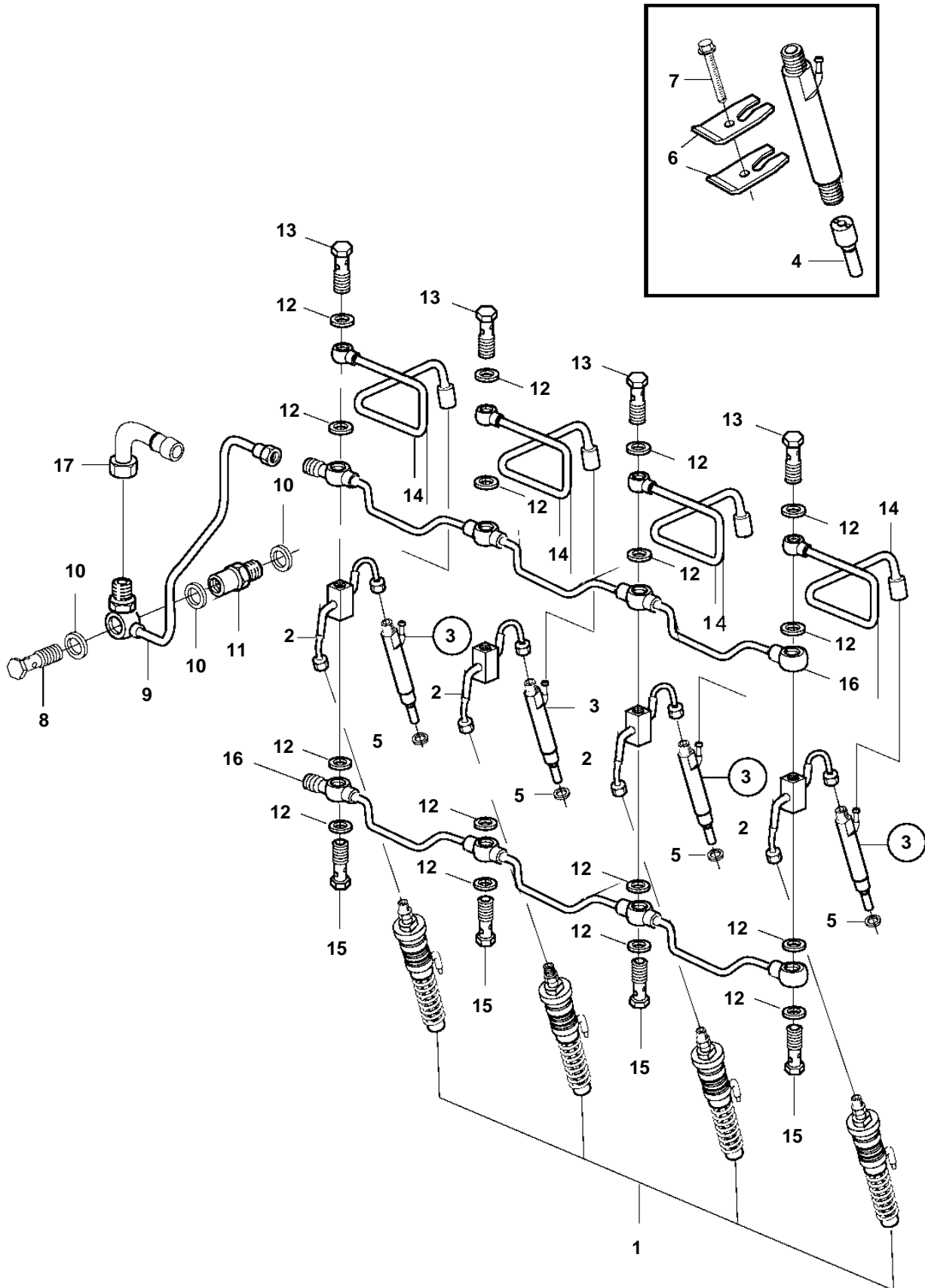


D5A-A TA



19643

**D5A-A TA**

| REF | PART NO. | QTY | DESCRIPTION              | SEE SEC. | NOTES |
|-----|----------|-----|--------------------------|----------|-------|
| 1   | 20500360 | 4   | Unit injector            | 6281     | COM I |
| 2   | 888763   | 4   | Fuel line, delivery pipe |          |       |
| 3   | 888874   | 4   | Injector                 |          | COM I |
| 4   | 888761   | 4   | · Nozzle                 |          |       |
| 5   | 11700426 | 4   | Washer                   |          |       |
| 6   | 11700424 | 8   | Retainer                 |          |       |
| 7   | 20405559 | 4   | Screw                    |          |       |
| 8   | 20405847 | 1   | Delivery valve           |          |       |
| 9   | 888768   | 1   | Leak-off pipe            |          |       |
| 10  | 969011   | 3   | Gasket                   |          |       |
| 11  | 888769   | 1   | Spacer sleeve            |          |       |
| 12  | 947620   | 20  | · Gasket                 |          |       |
| 13  | 888766   | 4   | Hollow screw             |          |       |
| 14  | 888764   | 4   | Leak-off pipe            |          |       |
| 15  | 888767   | 4   | Hollow screw             |          |       |
| 16  | 888875   | 2   | Leak-off pipe            |          |       |
| 17  | 3586738  | 1   | Hose connection          |          |       |