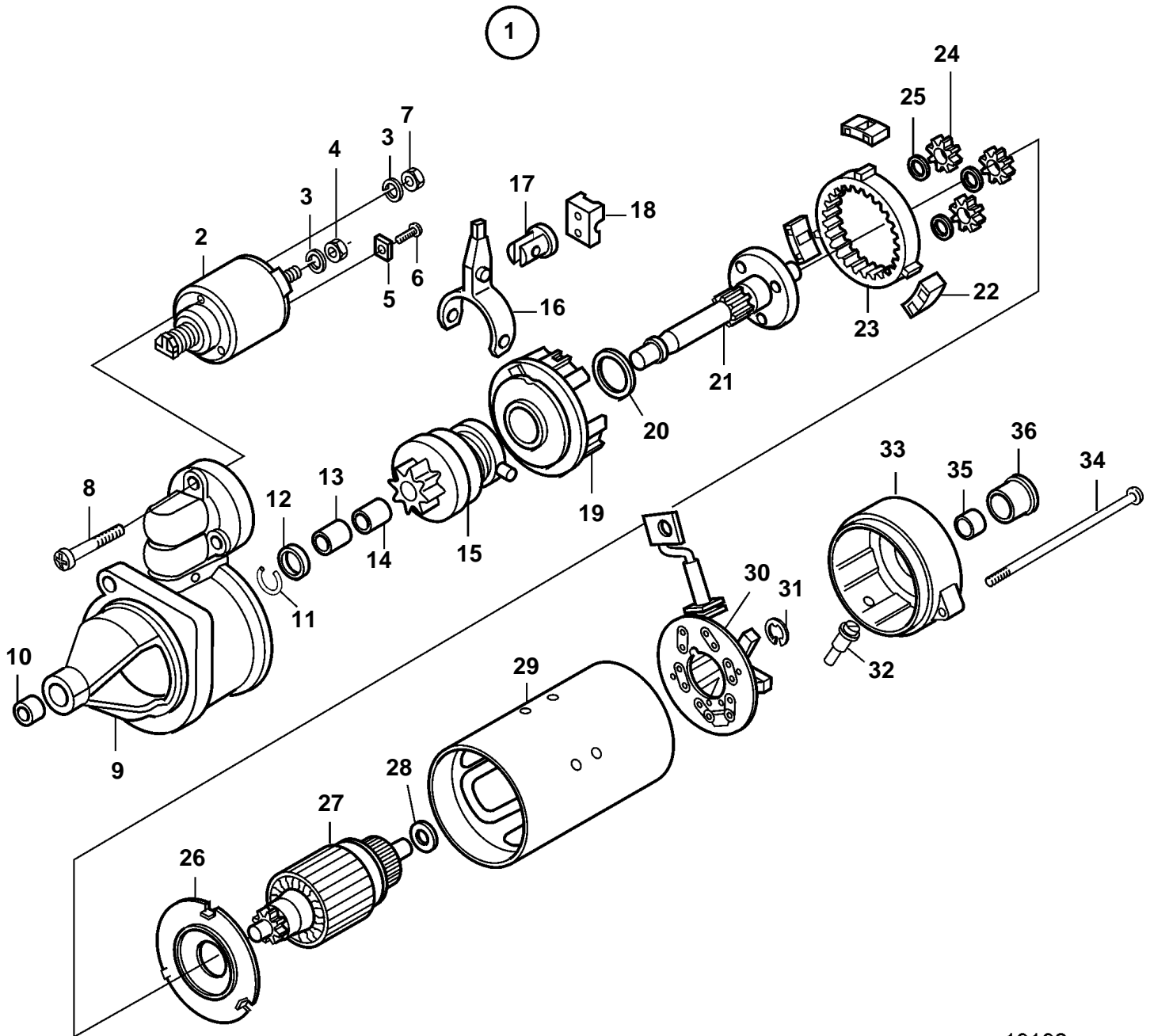


D5A-A T, D5A-A TA, D7A-A T, D7A-A TA, D7C-A TA



19192

D5A-A T, D5A-A TA, D7A-A T, D7A-A TA, D7C-A TA

| REF | PART NO. | QTY | DESCRIPTION | NOTES |
|-----|----------|-----|---------------------|---------------|
| 1 | 20405828 | 1 | Starter motor | |
| | 3803517 | 1 | Starter motor, exch | Exchange unit |
| 2 | 20460115 | 1 | · Relay | |
| 3 | 20460119 | 2 | · Lock washer | |
| 4 | 20460118 | 1 | · Nut | |
| 5 | 20460120 | 1 | · Clamp | |
| 6 | | 1 | · Screw | |
| 7 | | 1 | · Nut | |
| 8 | | 1 | · Screw | |
| 9 | | 1 | · Bearing shield | |
| 10 | | 1 | · Bushing | |
| 11 | | 1 | · Lock ring | |
| 12 | | 1 | · Washer | |
| 13 | | 1 | · Bushing | |
| 14 | | 1 | · Bushing | |
| 15 | 20460116 | 1 | · Start gear | |
| 16 | | 1 | · Engagement lever | |
| 17 | | 1 | · Retainer | |
| 18 | | 1 | · Stop lug | |
| 19 | | 1 | · Drive bearing | |
| 20 | | 1 | · Ring | |
| 21 | | 1 | · Shaft | |
| 22 | | 3 | · Retainer | |
| 23 | | 1 | · Gear ring | |
| 24 | | 3 | · Gear | |
| 25 | | 3 | · Washer | |
| 26 | | 1 | · Isolation plate | |
| 27 | | 1 | · Rotor | |
| 28 | | 1 | · Washer | |
| 29 | | 1 | · Housing | |
| 30 | 20499754 | 1 | · Brush retainer | |
| 31 | | 1 | · Lock washer | |
| 32 | | 1 | · Rubber buffer | |
| 33 | | 1 | · Cover | |
| 34 | | 1 | · Bolt | |
| 35 | | 1 | · Bushing | |
| 36 | | 1 | · Plug | |