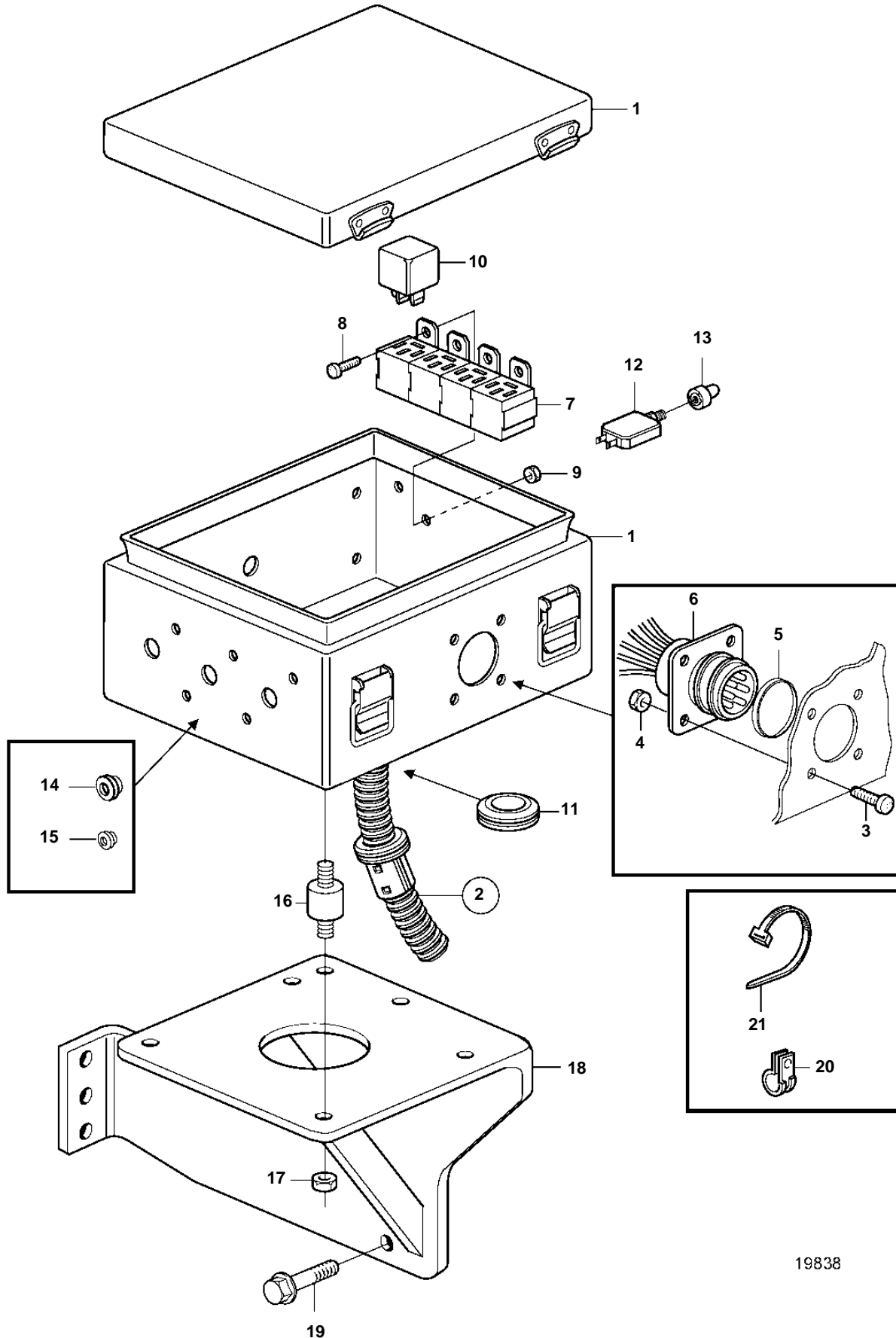


D7A-A T, D7A-A TA, D7C-A TA



19838

D7A-A T, D7A-A TA, D7C-A TA

REF	PART NO.	QTY	DESCRIPTION	NOTES
1	873953	1	Box	
2	874697	1	Wiring harness	
3	956046	4	· Screw	
4	955778	4	· Nut	
5	846615	1	· Sealing ring	
6	846611	1	· Sleeve connector, instrument panel	
7	977184	1	· Tab housing	
8	956076	2	· Screw	
9	963104	2	· Nut	
10	20374662	2	Relay	
11	943920	1	Protecting plug	
12	966689	1	Fuse	8A
13	862006	1	Protective cap	
14	974683	3	Plug	
15	974680	6	Plug	
16	1228599	4	Rubber cushion	
17	945407	4	Flange nut	
18	3836012	1	Bracket	
19	20405792	3	Screw	
20	983472	X	Tie straps	
	948211	X	Strip clamp	
21	942400	X	Clamp	D=7,9mm
	949746	X	Clamp	D=12,7mm
	949747	X	Clamp	D=15,9mm
	945081	X	Clamp	D=22,2mm
	947827	X	Clamp	D=25,4mm