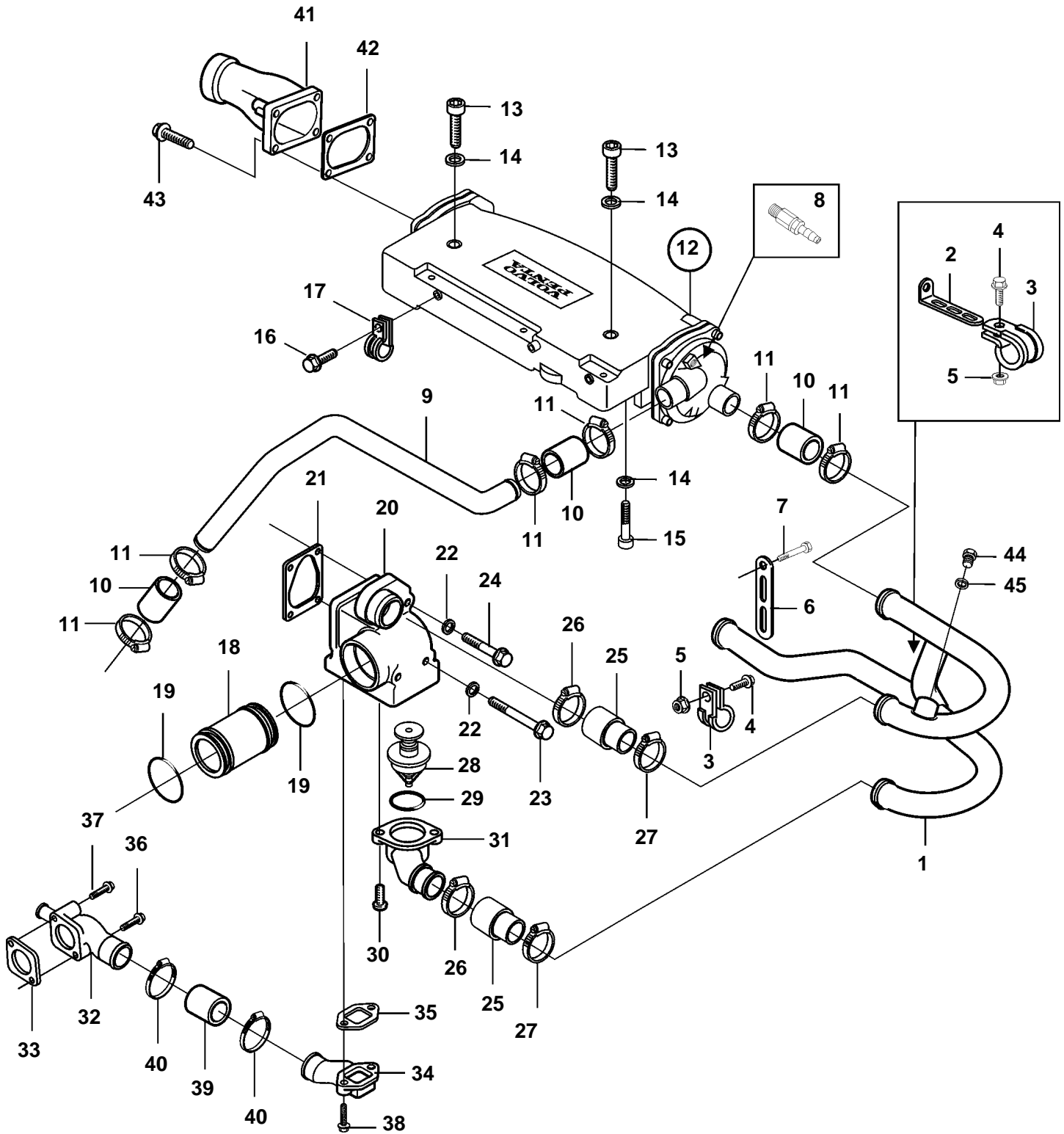


D5A-A TA



19808

D5A-A TA

| REF | PART NO. | QTY | DESCRIPTION | SEE SEC. | NOTES |
|-----|----------|-----|--------------------|----------|-----------------------------------|
| 1 | 3839440 | 1 | Water pipe | | |
| 2 | 965562 | 1 | Bracket | | |
| 3 | 969194 | 2 | Clamp | | |
| 4 | 946173 | 2 | Flange screw | | |
| 5 | 945408 | 2 | Flange nut | | |
| 6 | 965544 | 1 | Bracket | | |
| 7 | 970891 | 1 | Screw | | L=130mm |
| 8 | 966871 | 1 | Tap | | |
| 9 | 888896 | 1 | Seawater pipe | | Sea water pump-charge air cooler. |
| 10 | 3838574 | 3 | Hose | | L=65mm |
| 11 | 961671 | 6 | Hose clamp | | |
| 12 | 3838414 | 1 | Intercooler | | |
| | | | | 6424 | |
| 13 | 959239 | 2 | Screw | | |
| | 3587511 | 2 | Screw | | L=160mm |
| 14 | 20405802 | 4 | Washer | | |
| 15 | 959223 | 2 | Screw | | L=30mm |
| 16 | 20405792 | 1 | Screw | | L=16mm |
| 17 | 888852 | 1 | Clamp | | |
| 18 | 888827 | 1 | Water pipe | | |
| 19 | 20412325 | 2 | Sealing ring | | |
| 20 | 888844 | 1 | Thermostat housing | | |
| 21 | 888845 | 1 | Gasket | | |
| 22 | 976945 | 2 | Washer | | |
| 23 | 967825 | 2 | Screw | | L=165mm |
| 24 | 888847 | 2 | Screw | | L=115mm |
| 25 | 3838575 | 2 | Hose | | |
| 26 | 943479 | 2 | Hose clamp | | |
| 27 | 943478 | 2 | Clamp | | |
| 28 | 20450736 | 1 | Thermostat | | 83°C |
| 29 | 20459961 | 1 | Sealing ring | | |
| 30 | 20450713 | 2 | Screw | | |
| 31 | 888849 | 1 | Discharge pipe | | |
| 32 | 888817 | 1 | Discharge pipe | | |
| 33 | 20412341 | 1 | Gasket | | |
| 34 | 888818 | 1 | Water inlet pipe | | |
| 35 | 888820 | 1 | Gasket | | |
| 36 | 20460124 | 1 | Screw | | L=95mm |
| 37 | 20405917 | 1 | Screw | | L=80mm |
| 38 | 20405709 | 2 | Screw | | L=55mm |
| 39 | 3838575 | 1 | Hose | | |
| 40 | 943480 | 2 | Clamp | | |
| 41 | 888876 | 1 | Charge air pipe | | |
| 42 | 888775 | 1 | Gasket | | |
| 43 | 20441520 | 4 | Screw | | L=25mm |
| 44 | 479956 | 1 | Plug | | |
| 45 | 941908 | 1 | Spring washer | | |