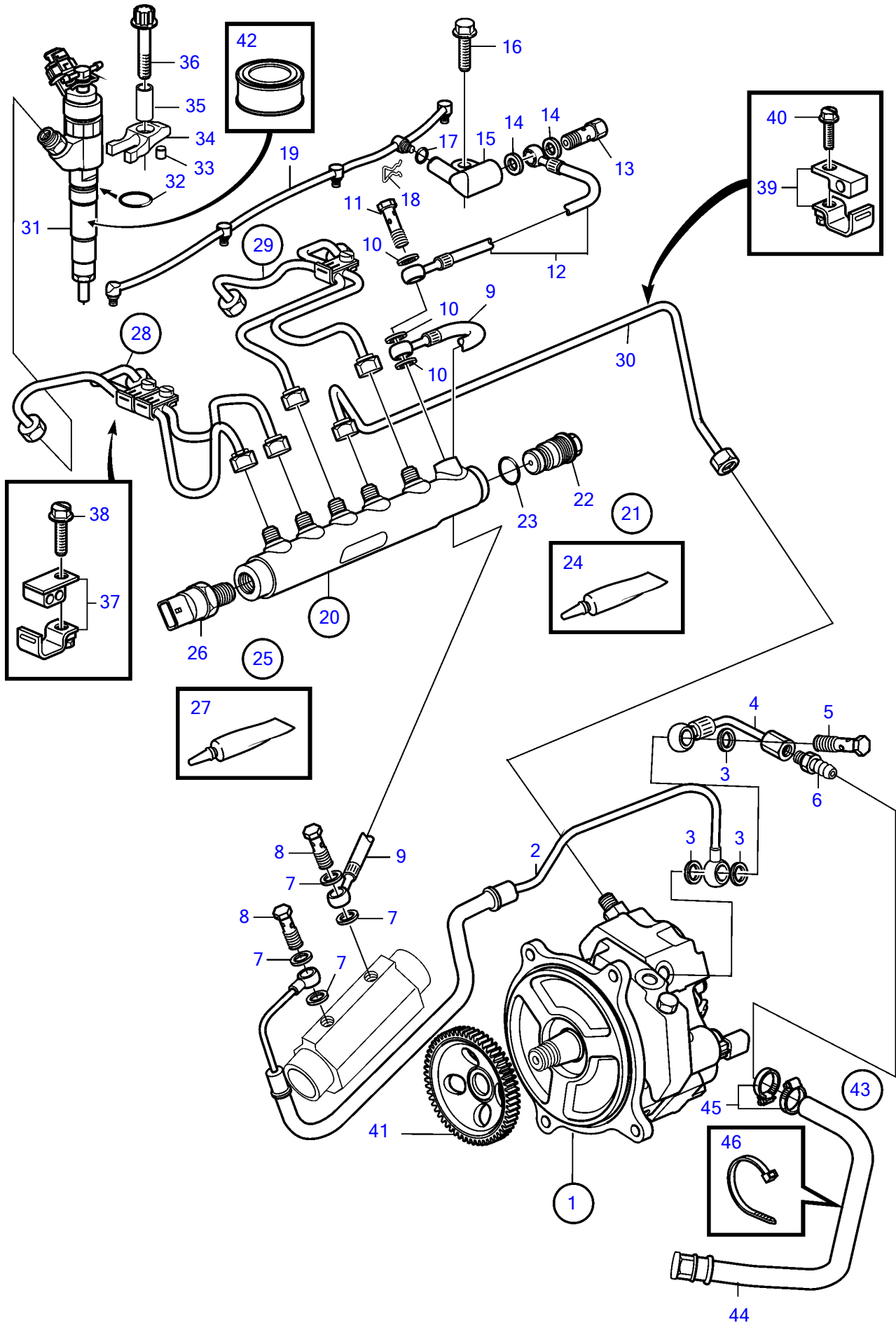


D4-180I-B, D4-210A-A, D4-210I-A, D4-210I-B, D4-225I-B, D4-260A-A, D4-260A-B, D4-260D-B, D4-260I-A, D4-260I-B



D4-180I-B, D4-210A-A, D4-210I-A, D4-210I-B, D4-225I-B, D4-260A-A, D4-260A-B, D4-260D-B, D4-260I-A, D4-260I-B

REF	PART NO.	QTY	DESCRIPTION	SEE SEC.	NOTES
1	3803633	1	High-pressure pump,		
			•	6600	
2	3582997	1	Fuel hose		
3	11994	3	Gasket		
4	21822234	1	Return connection		
5	947975	1	Hollow screw		
6	3825000	1	Hose nipple		
7	20852763	4	Sealing ring		
8	969299	2	Hollow screw		
9	3584367	1	Fuel hose		
10	11994	3	Gasket		
11	947975	1	Hollow screw		
12	3584366	1	Fuel hose		
13	3584427	1	Pressure retaining v		
14	969011	2	Gasket		
15	3583123	1	Valve housing		
16	946173	1	Flange screw		
17	3589700	5	O-ring		
18	3583122	1	Lock spring		
19	3582802	1	Leak-off line		
20	3584370	1	Rail		SN-2004002079
	3588739	1	Rail		SN2004002080-
	3886062	1	Rail		SN2004008447-
21	3884353	1	• Pressure limiting va		(3807013)
22	3884350	1	• • Pressure limiting va		
23	3588336	1	• • • O-ring		
24	828250	1	• • • Lubricating grease		
			• Bulletin P-18-4-6	P-18-4-6-EN	Water resistant grease for grease gun
25	3884352	1	• Pressure sensor		(3587927)
26	3843100	1	• • Pressure sensor		
27	828250	1	• • Lubricating grease		
			• Bulletin P-18-4-6	P-18-4-6-EN	Water resistant grease for grease gun
28	3588024	1	Delivery pipe kit		
29	3588025	1	Delivery pipe kit		
30	3582796	1	Delivery pipe		
31	3801294	4	Injector		SN-2004002079
	3801295	4	Injector		SN2004002080-
32	3887602	4	O-ring		
33	3583442	4	Support		
34	3582669	4	Clamp		
35	889789	4	Sleeve		
36	3586690	4	Six point screw		
37	3586006	3	Clamp		
38	3586005	3	Screw		
39	3588018	1	Clamp		
40	946544	1	Flange screw		
41	889749	1	Gear		
42	3588346	X	Lubricant		500G
43	21967719	1	Hose		
44	21945682	1	• Hose		
45	961664	2	• Hose clamp		
46	980464	1	• Cable tie		