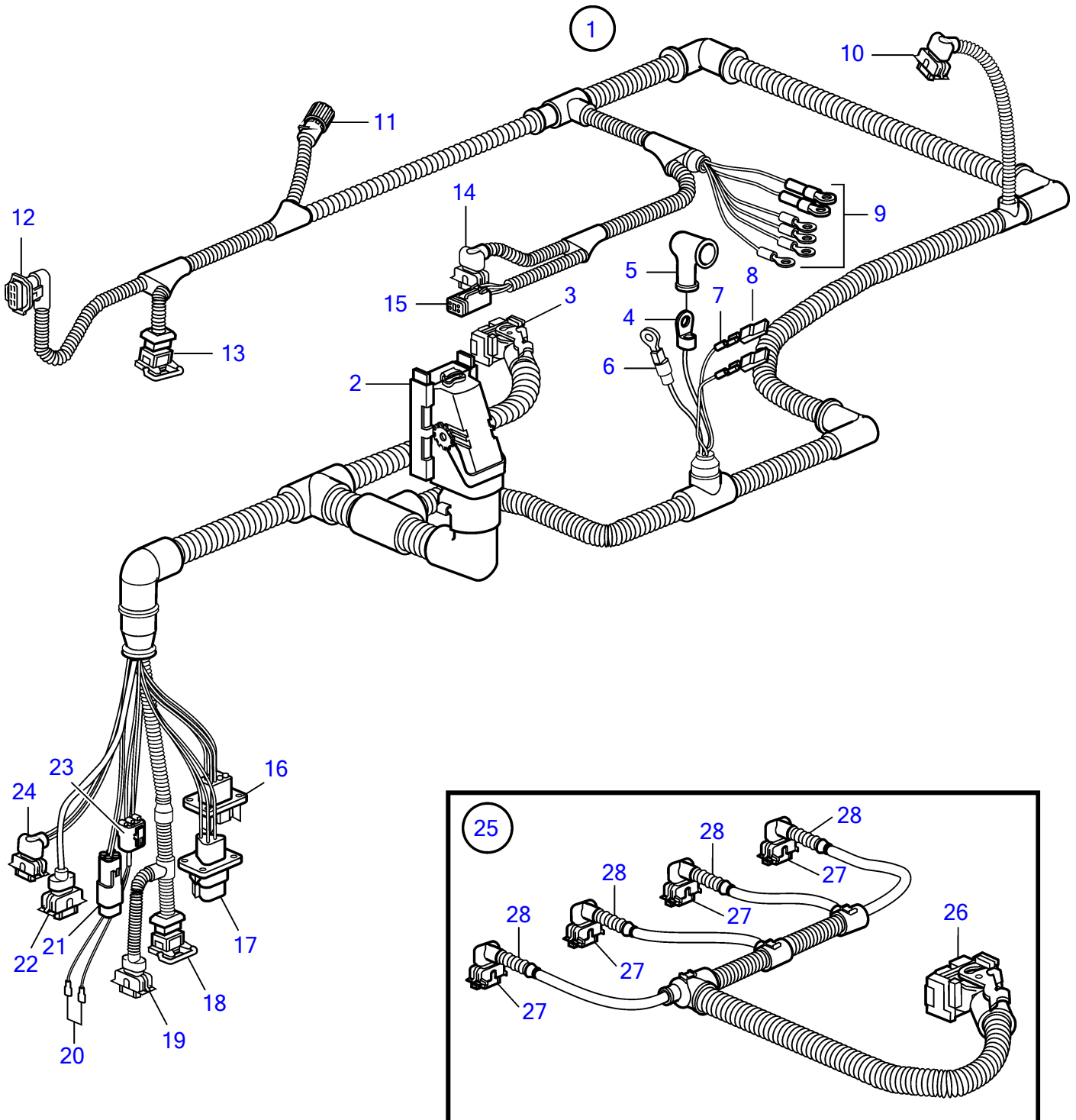


D4-180I-B, D4-210A-A, D4-210I-A, D4-210I-B, D4-225I-B, D4-260I-A, D4-260I-B, D4-300I-A



24685

D4-180I-B, D4-210A-A, D4-210I-A, D4-210I-B, D4-225I-B, D4-260I-A, D4-260I-B, D4-300I-A

| REF | PART NO. | QTY | DESCRIPTION                         | NOTES    |
|-----|----------|-----|-------------------------------------|----------|
| 1   | 21138335 | 1   | Wiring harness                      |          |
| 2   | 874567   | 1   | • Cover, 89-pole                    | EDC-unit |
| 3   | 874568   | 1   | • Cover, 36-pole                    | EDC-unit |
| 4   | 976478   | 1   | • Cable terminal                    |          |
| 5   | 842150   | 1   | • Protective cap                    |          |
| 6   | 976477   | 1   | • Cable terminal                    |          |
| 7   | 973121   | 2   | • Cable terminal                    |          |
| 8   | 949597   | 2   | • Housing                           |          |
| 9   | 978969   | 1   | • Cable terminal                    |          |
|     | 970790   | 1   | • Cable terminal                    |          |
|     | 940336   | 1   | • Cable terminal                    |          |
|     | 978966   | 1   | • Cable terminal                    |          |
|     | 978970   | 1   | • Cable terminal                    |          |
|     | 940337   | 1   | • Cable terminal                    |          |
| 10  | 874368   | 1   | • Receptacle housing                |          |
| 11  | 8159018  | 1   | • Adapter                           |          |
| 12  | 874456   | 1   | • Receptacle housing, pressure/temp | 4-pole   |
| 13  | 977929   | 1   | • Housing, WIF                      | 3-pole   |
| 14  | 874368   | 1   | • Receptacle housing, fuel pump     |          |
| 15  | 874957   | 1   | • Housing                           | 4-pole   |
| 16  | 874432   | 1   | • Tab housing                       | VPEP     |
| 17  | 874654   | 1   | • Housing, oil level                |          |
| 18  | 874432   | 1   | • Tab housing, temperature          | Fuel     |
| 19  | 874455   | 1   | • Receptacle housing, pressure      | 3-pole   |
| 20  |          | 1   | • Stop connector                    |          |
| 21  | 874802   | 1   | • Housing                           |          |
| 22  | 976256   | 1   | • Housing, temperature              | 2-pole   |
| 23  | 970753   | 1   | • Housing, temperature              | 2-pole   |
| 24  | 874368   | 1   | • Receptacle housing                | 4-pole   |
| 25  | 3809873  | 1   | Wiring harness                      |          |
| 26  | 874566   | 1   | • Coupling piece                    | 16-pole  |
| 27  | 874368   | 4   | • Receptacle housing                | 2-pole   |
| 28  | 3809871  | 4   | • Rubber cap                        |          |