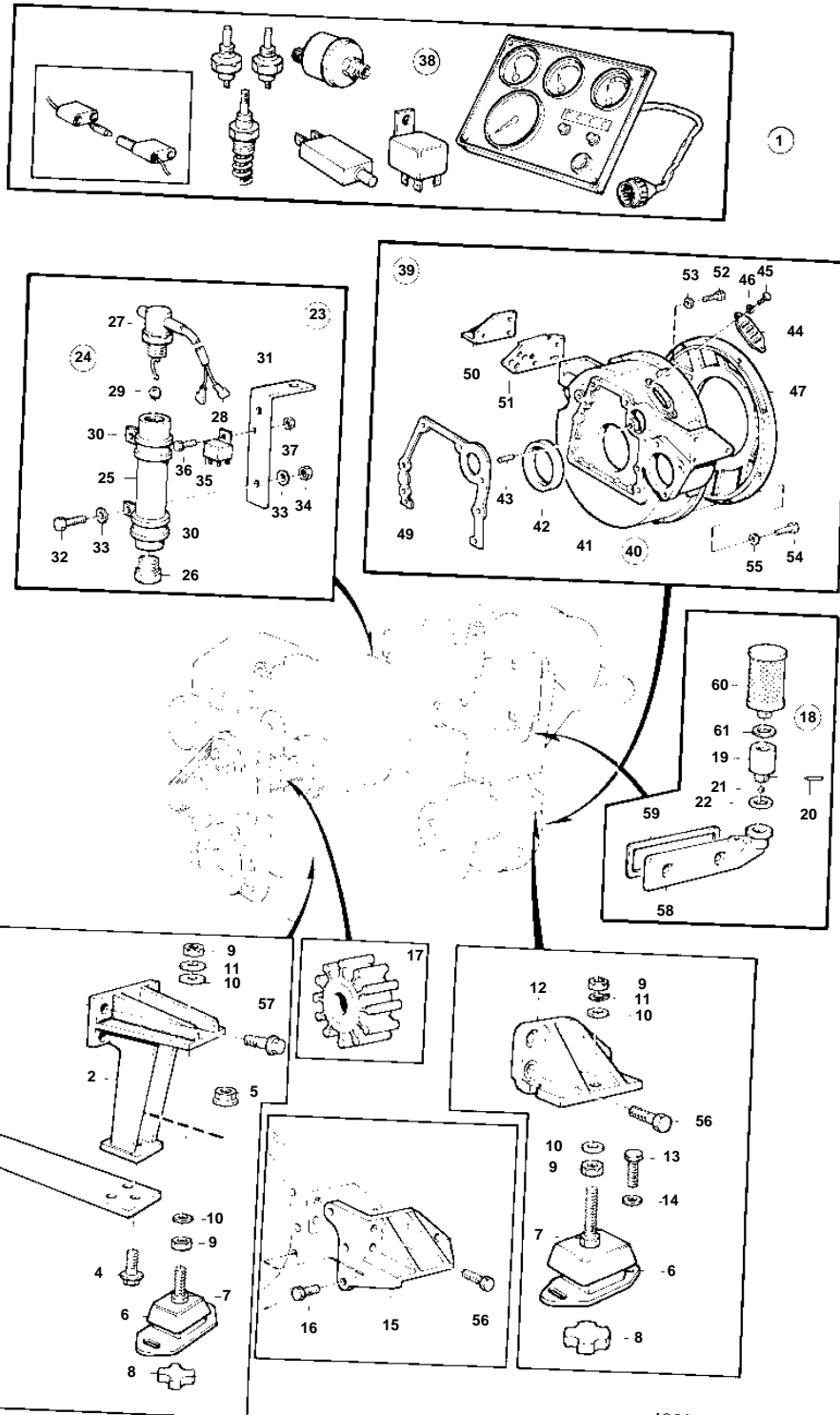


TAMD31A



10254

TAMD31A

REF	PART NO.	QTY	DESCRIPTION	SEE SEC.	NOTES
1	860362	1	Conversion kit		24V. ONLY FOR PRODUCT NO.868321
2	858158	2	• Bracket		
3	858159	1	• Bracket		
4	965191	6	• Screw		
5	971096	6	• Nut		
6	858160	4	• Rubber cushion		
			• Bulletin 44-26	44-26-EN	Reinforced Rubber Cushion
7	955900	4	• • Washer		
8	843299	4	• • Rubber disc		
9	955805	8	• Nut		
10	191940	6	• Washer		
	955900	2	• Washer		
11	941912	4	• Spring washer		
12	859375	1	• Engine bracket		
13	965220	8	• Flange screw		
14	960148	8	• Washer		
15	858952	1	• Engine bracket		
16	965186	3	• Screw		
17	858249	1	• Impeller		
18	858256	1	• Check valve		
19	858235	1	• • Check valve		
20	951971	1	• • Spring pin		
21	181501	1	• • Steel ball		
22	843449	1	• • Gasket		
23	859950	1	• Tilt sensor		
24	858255	1	• • Tilt sensor		
25	858169	1	• • • Sleeve		
26	914392	1	• • • Plug		
27	858454	1	• • • Switch		
28		X	• • • • CABLES, TERMINALS		SEE GROUP 3
29	181332	2	• • • Steel ball		
30	952635	2	• • Clamp		
31	858803	1	• • Bracket		
32	955271	2	• • Screw		
33	955892	4	• • Washer		
34	955781	2	• • Nut		
35	837878	1	• • Relay		
36	965199	1	• • Screw		
37	965483	1	• • Nut		
38	860323	1	• Conversion kit		
				090-1465	
39		1	FLYWHEEL HOUSING		SEE GROUP 2A. FOR ONE STARTER.
	859998	1	Flywheel housing		FOR TWO STARTERS.
40	858254	1	• Flywheel housing		
41	858164	1	• • Flywheel housing		
42	1542204	1	• • Sealing ring		
43	404069	1	• • Setting indicator		
44	407092	1	• • Cover		
45	955269	2	• • Screw		
46	941906	2	• • Spring washer		
47	858165	1	• Cover		
48	859375	1	• Engine bracket		
49	829487	1	• Gasket		
50	859375	1	• Engine bracket		
51	859437	1	• Bracket		
52		8	SCREW		SEE GROUP 2A
53		8	WASHER		SEE GROUP 2A
54		10	SCREW		SEE GROUP 2A

