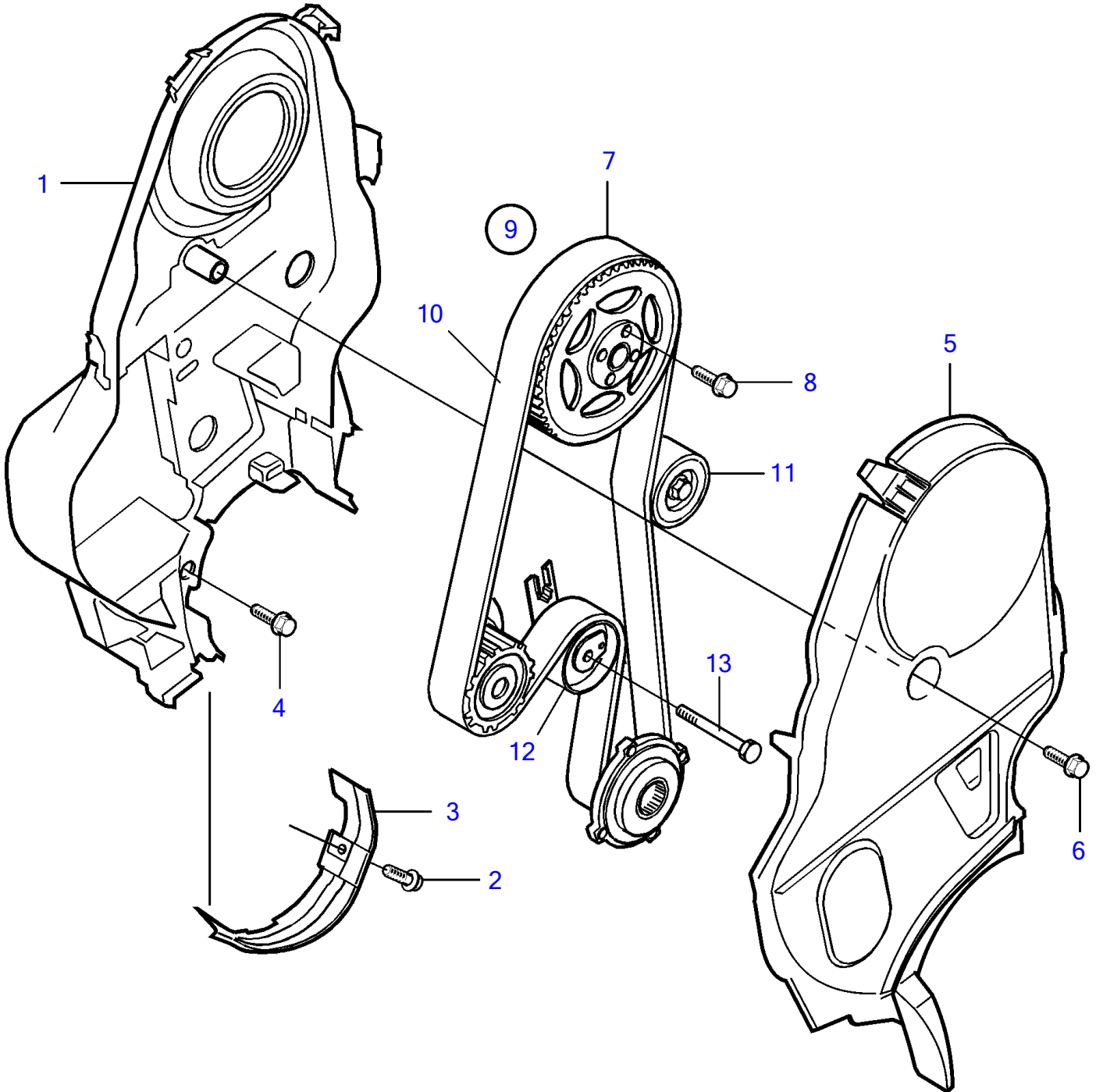


D3-110I-A, D3-110I-B, D3-110I-C, D3-130A-A, D3-130I-A, D3-130A-B, D3-130I-B, D3-130A-C, D3-130I-C, D3-160A-A, D3-160I-A, D3-160A-B, D3-160I-B, D3-160A-C, D3-160I-C, D3-190A-B, D3-190I-B, D3-190A-C, D3-190I-C



22729

D3-110I-A, D3-110I-B, D3-110I-C, D3-130A-A, D3-130I-A, D3-130A-B, D3-130I-B, D3-130A-C, D3-130I-C, D3-160A-A, D3-160I-A, D3-160A-B, D3-160I-B, D3-160A-C, D3-160I-C, D3-190A-B, D3-190I-B, D3-190A-C, D3-190I-C

| REF | PART NO. | QTY | DESCRIPTION | NOTES |
|-----|----------|-----|----------------|----------------------|
| 1 | 8631626 | 1 | Belt protector | |
| 2 | 981311 | 2 | Flange screw | |
| 3 | 30731907 | 1 | Belt protector | |
| 4 | 982384 | 4 | Screw | M6x11,5mm |
| 5 | 30731283 | 1 | Belt protector | |
| 6 | 981312 | 1 | Flange screw | M7x48,5mm |
| 7 | 8631554 | 1 | Gear pulley | SN-344632 |
| | 8642804 | 1 | Gear pulley | SN344633- |
| 8 | 968881 | 4 | Flange screw | M8x25mm |
| | 985373 | 4 | Screw | For 8642804 |
| 9 | 31258305 | 1 | Tooth belt | |
| 10 | 31258306 | 1 | • Tooth belt | |
| 11 | 8692561 | 1 | • Idler pulley | |
| 12 | 30731774 | 1 | • Tensioner | Replaced by 31339542 |
| | 31339542 | 1 | Tensioner | |
| 13 | 985806 | 1 | Hexagon screw | M8x53,5mm |