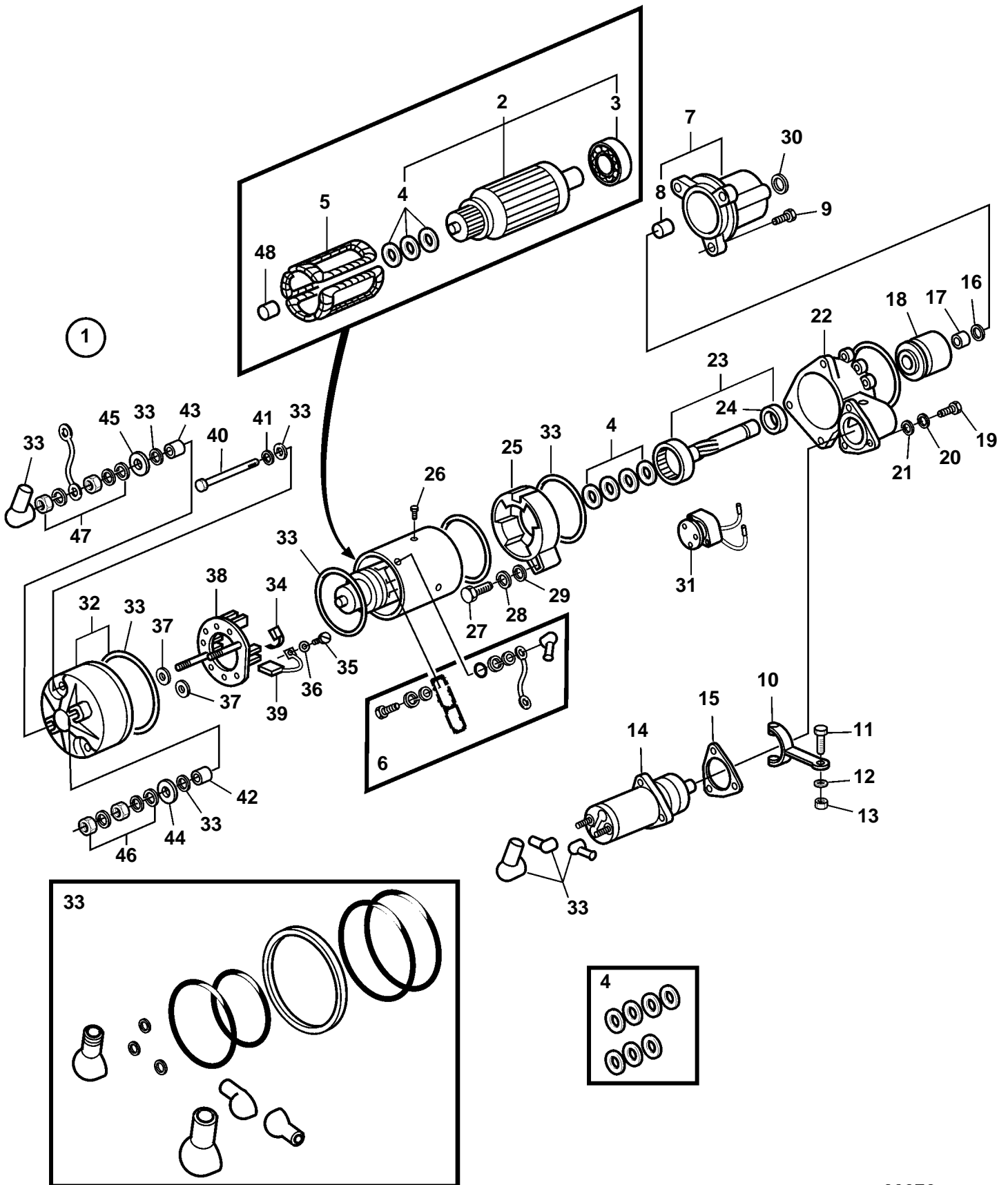


D25A-MT, D25A-MS, D30A-MT, D30A-MS



22070

**D25A-MT, D25A-MS, D30A-MT, D30A-MS**

REF	PART NO.	QTY	DESCRIPTION	NOTES
1	3835216	1	Starter motor	
2		1	· Rotor	
3	3832162	1	· · Bearing	
4	3834865	1	· · Washer kit	
	3834865	1	· Washer kit, shaft	
5	3833206	1	· Stator	
6			· Connector kit	Not marketed by Volvo Penta.
7	3833031	1	· Bearing housing	
8	3834930	1	· · Bearing bushing	
9		1	· Screw	Not marketed by Volvo Penta.
10	3833720	1	· Lever	
11		1	· Screw	Not marketed by Volvo Penta.
12		1	· Washer	Not marketed by Volvo Penta.
13		1	· Nut	Not marketed by Volvo Penta.
14	3834757	1	· Starter solenoid	
15		1	· Gasket	Not marketed by Volvo Penta.
16	3834349		· Lock ring	
17	3834733	1	· Sleeve	
18	3836534	1	· Clutch	
19		1	· Screw	Not marketed by Volvo Penta.
20		1	· Spring washer	Not marketed by Volvo Penta.
21		1	· Washer	Not marketed by Volvo Penta.
22	3833029	1	· Bracket	
23	3834495	1	· Shaft	
24	3832161	1	· · Bearing	
25	3833027	1	· Bracket	
26		1	· Screw	Not marketed by Volvo Penta.
27		1	· Screw	Not marketed by Volvo Penta.
28		1	· Spring washer	Not marketed by Volvo Penta.
29		1	· Washer	Not marketed by Volvo Penta.
30	3833313	1	· Cover	
31	3835192	1	· Relay	
32	3833018	1	· Bracket	
33	3834434	1	· Sealing ring kit	
34	3834653	4	· Brush spring	
35		1	· Screw	Not marketed by Volvo Penta.
36		1	· Spring washer	Not marketed by Volvo Penta.
37		2	· Washer	Not marketed by Volvo Penta.
38	3833624	1	· Brush retainer	
39	3833078	4	· Carbon brush	
40	3832191	2	· Screw	
41		1	· Washer	Not marketed by Volvo Penta.
42	3834775	1	· Housing	
43	3834776	1	· Housing	
44	3834876	2	· Washer	
45	3834877	2	· Washer	
46		1	· Nut set	Not marketed by Volvo Penta.
47		1	· Nut set	Not marketed by Volvo Penta.
48	3834929	1	· Bearing bushing	