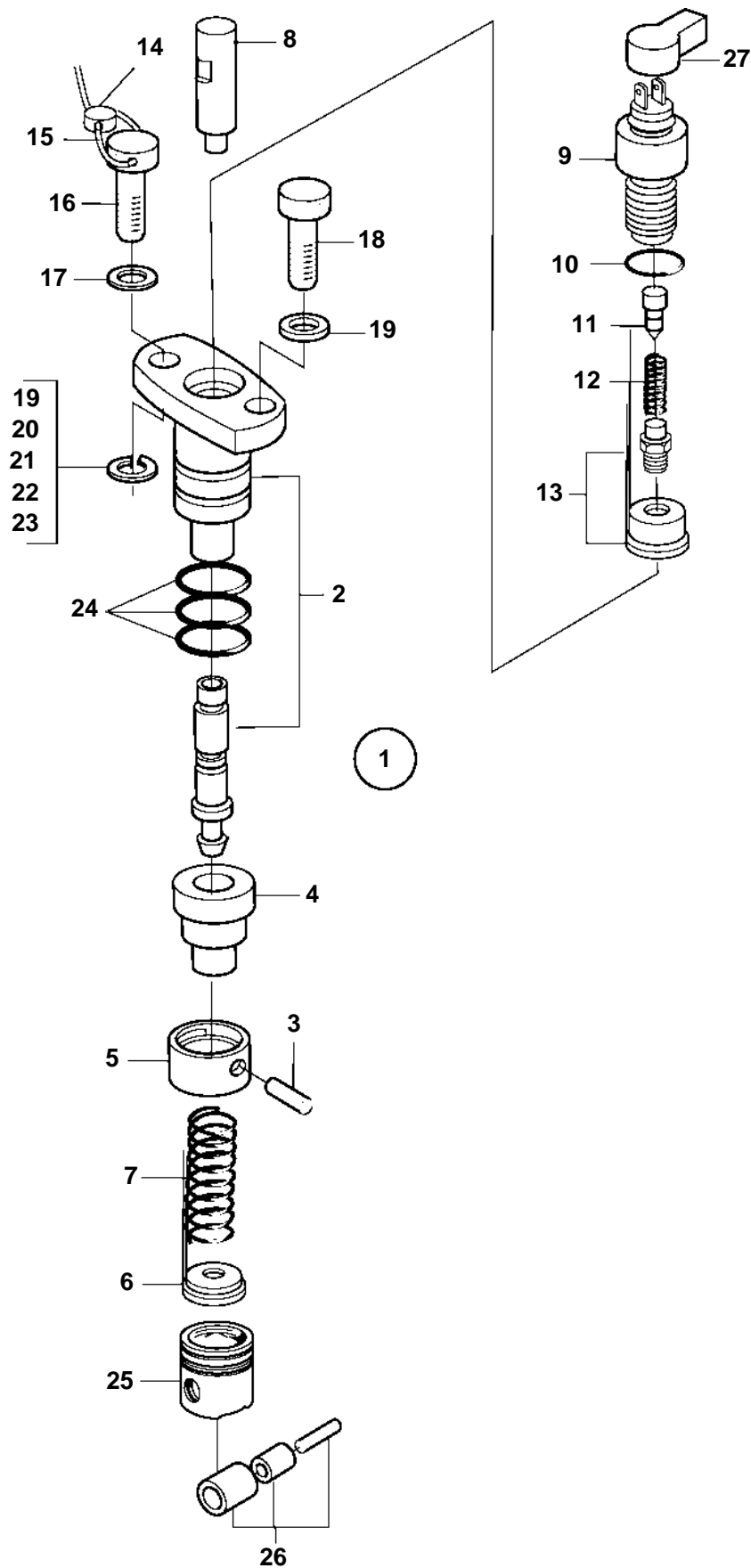


D25A-MT AUX, D25A-MS AUX, D30A-MT AUX, D30A-MS AUX



19538

D25A-MT AUX, D25A-MS AUX, D30A-MT AUX, D30A-MS AUX

REF	PART NO.	QTY	DESCRIPTION	NOTES
1	888755	6	Pump element	(3834941). Included in fuel injection pump 3835187
2		6	• Detent pinkit	
3		6	• Pin	
4	3833985	6	• Pinion	
5	3834490	6	• Seat	
6	3834479	6	• Seat	
7	3834661	6	• Spring	
8	3833625	6	• Retainer	
9	3833627	6	Valve retainer	Included in fuel injection pump 3835187
10	3831566	6	O-ring	Included in fuel injection pump 3835187
11	3838330	6	Adjusting sleeve	Included in fuel injection pump 3835187
12	3835215	6	Valve spring	Included in fuel injection pump 3835187
13	3838331	6	Delivery valve	Included in fuel injection pump 3835187
14		1	Wire	Included in fuel injection pump 3835187
15	3832024	1	Lead sealing tab	Included in fuel injection pump 3835187
16	3832268	6	Screw	Included in fuel injection pump 3835187
17	3834867	12	Washer	Included in fuel injection pump 3835187
18	3832267	6	Screw	Included in fuel injection pump 3835187
19	3834591	1	Shim	TH = 0,80mm. Included in fuel injection pump 3835187
20	3834592	1	Shim	TH = 0,90mm. Included in fuel injection pump 3835187
21	3834593	1	Shim	TH = 1,00mm. Included in fuel injection pump 3835187
22	3834594	1	Shim	TH = 1,10mm. Included in fuel injection pump 3835187
23	3834595	1	Shim	TH = 1,30mm. Included in fuel injection pump 3835187
24	3833847	18	O-ring	Included in fuel injection pump 3835187
25	3834762	6	Tappet	Included in fuel injection pump 3835187
26	3839518	6	Tappet	Included in fuel injection pump 3835187
27	3839517	1	Cap	