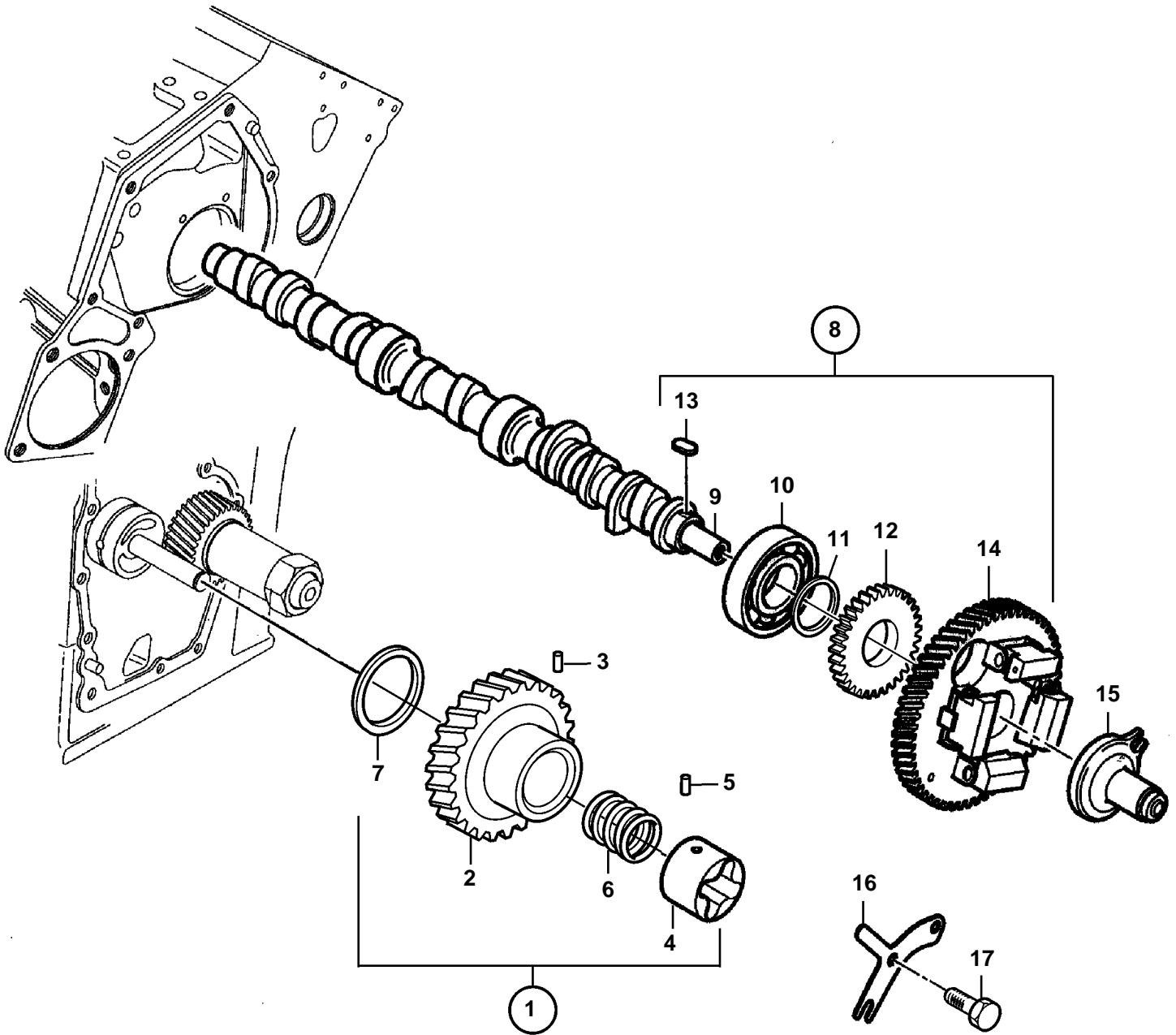


D2-75A, D2-75B, D2-75C



20038

D2-75A, D2-75B, D2-75C

| REF | PART NO. | QTY | DESCRIPTION | NOTES |
|-----|----------|-----|----------------|---|
| 1 | 3580569 | 1 | Gear | |
| 2 | | | · Gear | |
| 3 | 3583721 | 3 | · Bushing | |
| 4 | 3583722 | 1 | · Vane | Replaced by 1 pc complete oil pump gear 3580569 |
| 5 | 3583723 | 3 | · Locating pin | |
| 6 | 861988 | 1 | · Spring | |
| 7 | 861986 | 1 | Thrust washer | |
| 8 | 3583548 | 1 | Camshaft | Replaced by 3586433 |
| | 3586433 | | Camshaft | |
| 9 | | 1 | · Camshaft | |
| 10 | 3583715 | 1 | · Bearing | |
| 11 | 3583717 | 1 | · Spacer | |
| 12 | 861982 | 1 | · Gear | |
| 13 | 861969 | 1 | · Woodruff key | |
| 14 | 3583718 | 1 | · Gear | |
| 15 | 3580568 | 1 | Sliding sleeve | |
| 16 | 3583720 | 1 | Plate | |
| 17 | 861526 | 1 | Screw | |